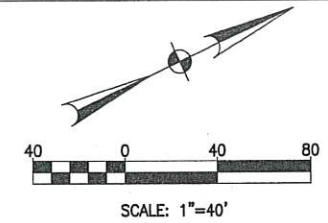
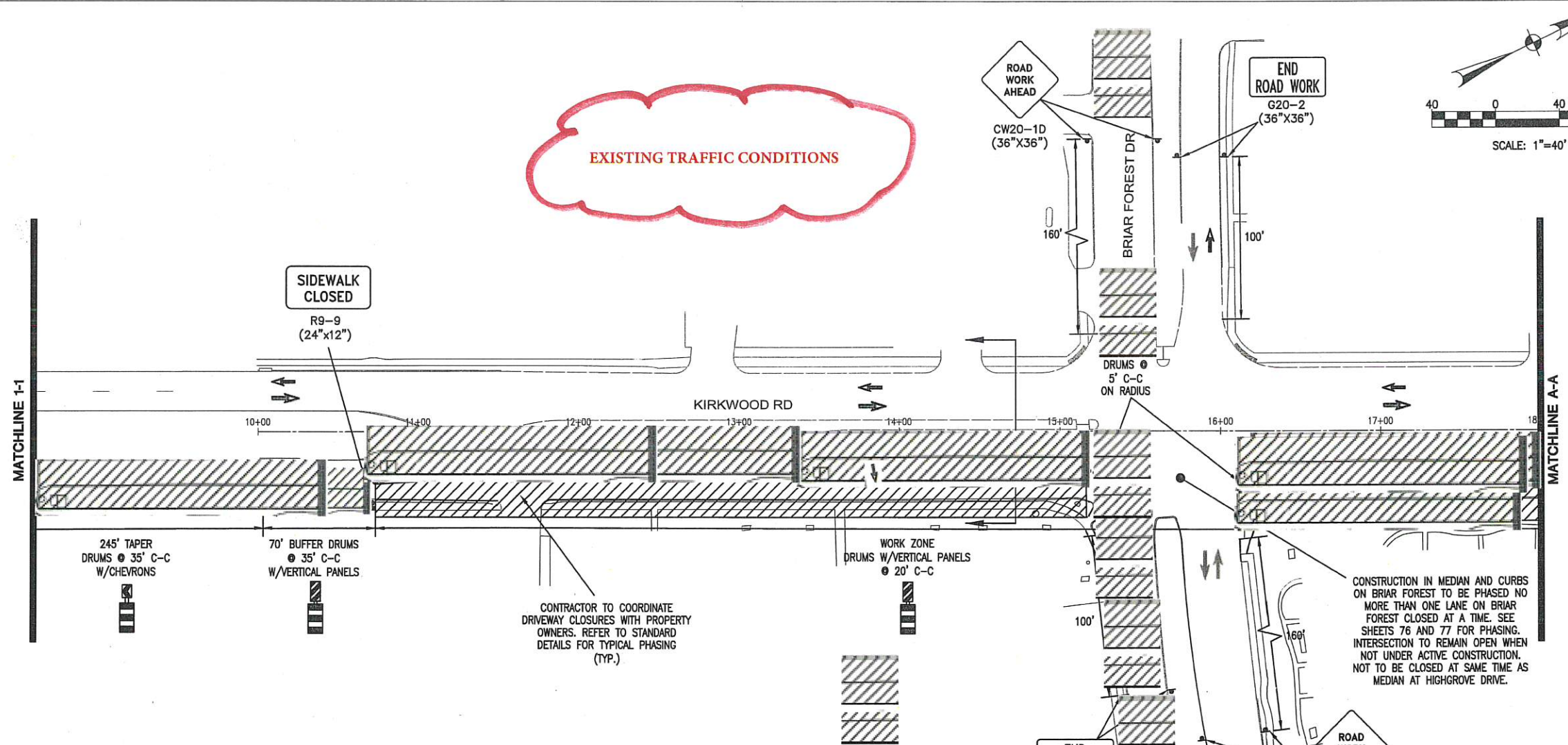


Feb 04, 2019 - 11:12am X:\M03\2019\11\12\am\X:\M03\2019\11\12\am\T:\DOT\Traffic\03-14067-21-TCP-PHASE-03.dwg



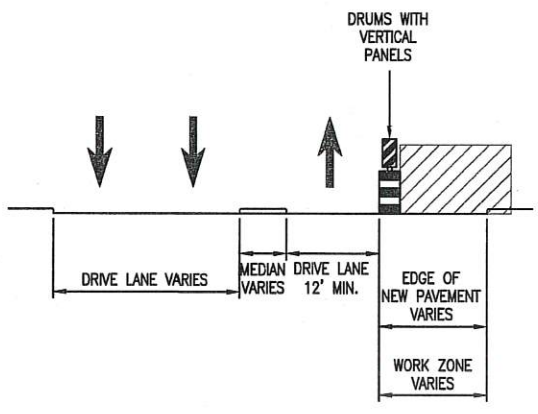
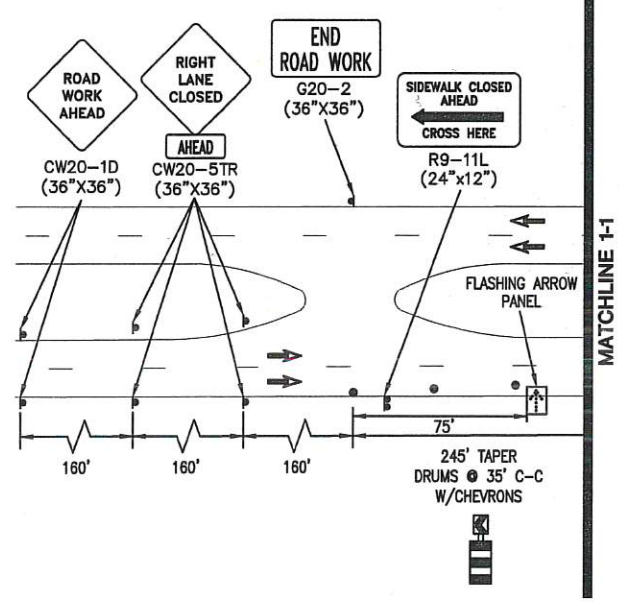
NOTE:
The location of existing underground utilities are shown in an approximate way only. The contractor shall contact the Utility Coordinating Committee at 713-223-4567 or 1-800-669-8344 and the City of Houston Department of Public Works and Engineering at 832-394-9098 a minimum of two working days prior to construction to field locate utilities. The contractor shall determine the exact location of all existing utilities before commencing work. He agrees to be fully responsible for any and all damages which might be occasioned by his failure to exactly locate and preserve any and all underground utilities.

CAUTION: UNDERGROUND GAS FACILITIES
Locations of CenterPoint Energy main lines (to include CenterPoint Energy, Interstate Pipeline Inc. where applicable) are shown in an approximate location only. Service lines are usually not shown. Our signature on these plans only indicates that our facilities are shown in approximate location. It does not imply that a certified analysis has been made. The contractor shall contact the Utility Coordinating Committee at 713-223-4567 or 1-800-669-8344 a minimum of 48 hours prior to construction to have main and service lines field located.
* When CenterPoint Energy gas line markings are not visible, call 713-967-8037 (200 am to 4:30 pm). For status of line location request before excavation begins.
* When excavating within eighteen inches (18") of the indicated location of CenterPoint Energy facilities, all excavations must be accomplished using non-mechanized excavation procedures.
* When CenterPoint Energy facilities are exposed, sufficient support must be provided to the facilities to prevent excessive stress on the piping.
The contractor is fully responsible for any damages caused by the contractor's failure to exactly locate and preserve these underground facilities.

WARNING: OVERHEAD ELECTRICAL FACILITIES
Overhead lines may exist on the property. The location of overhead lines has not been shown on these drawings and the contractor should locate them prior to beginning any construction. Texas law, Section 252, Health and Safety Code, forbids activities that occur in close proximity to high voltage lines, specifically any activities where persons or things may come within six (6) feet of live overhead high voltage lines, and operating a crane, derrick, power shovel, drilling rig, pile driver, hoisting equipment, or similar apparatus within 10 feet of live overhead high voltage lines. Parties responsible for the work, including contractors, are legally responsible for the safety of construction workers under this law. This law carries both criminal and civil liability. To arrange for lines to be turned off or removed call CenterPoint Energy at 713-207-2222.

ACTIVITIES ON OR ACROSS CENTERPOINT ENERGY PIPE OR EASEMENT PROPERTY
No approval to use, cross, or occupy CenterPoint fee or easement property is given if you need to use CenterPoint property, please contact our Surveying & Right of Way Division at 713-207-5789.

WARNING: AT&T TEXAS/SNET FACILITIES
The locations of AT&T Texas/SNET facilities are shown in an approximate way only. The contractor shall determine the exact location before commencing work. He agrees to be fully responsible for any and all damages which might be occasioned by failure to exactly locate and preserve these underground utilities. The contractor shall call 1-800-394-5277 a minimum of 48 hours prior to construction to have underground lines field located. When excavating within eighteen inches (18") of the indicated location of AT&T Texas/SNET facilities, all excavations must be accomplished using non-mechanized excavation procedures. When boring, the contractor shall expose the AT&T Texas/SNET facilities.
When AT&T Texas/SNET facilities are exposed, the contractor will provide support to prevent damage to the conduit ducts or cables. When excavating near telephone poles the contractor shall brace the pole for support. The presence or absence of AT&T Texas/SNET underground conduit facilities does not mean that there are no direct buried cables in the area. Follow the Direct Burial Cable Procedure to locate the AT&T Texas/SNET buried cables as indicated in the AT&T Texas Research and Signature Process for AT&T Texas/SNET Facilities. Please contact the AT&T Texas Damage Prevention Manager M. Rosevelt, Jr. at 713-567-4282 or email him at m.rosevelt@att.com. If there are questions about boring or excavating near our AT&T Texas/SNET facilities.



TYPICAL PHASE 3 CROSS-SECTION
N.T.S.

LEGEND:

	DRUM
	SELF RIGHTING MARKER
	LOW PROFILE CONCRETE
	BARRIER WITH REFLECTORS
	SIGN
	TYPE II BARRICADE
	TYPE III BARRICADE
	WORK ZONE
	FLASHING ARROW PANEL
	LANE OPEN FOR TRAFFIC
	FLAGGER

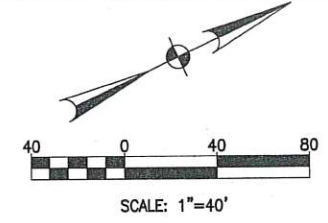
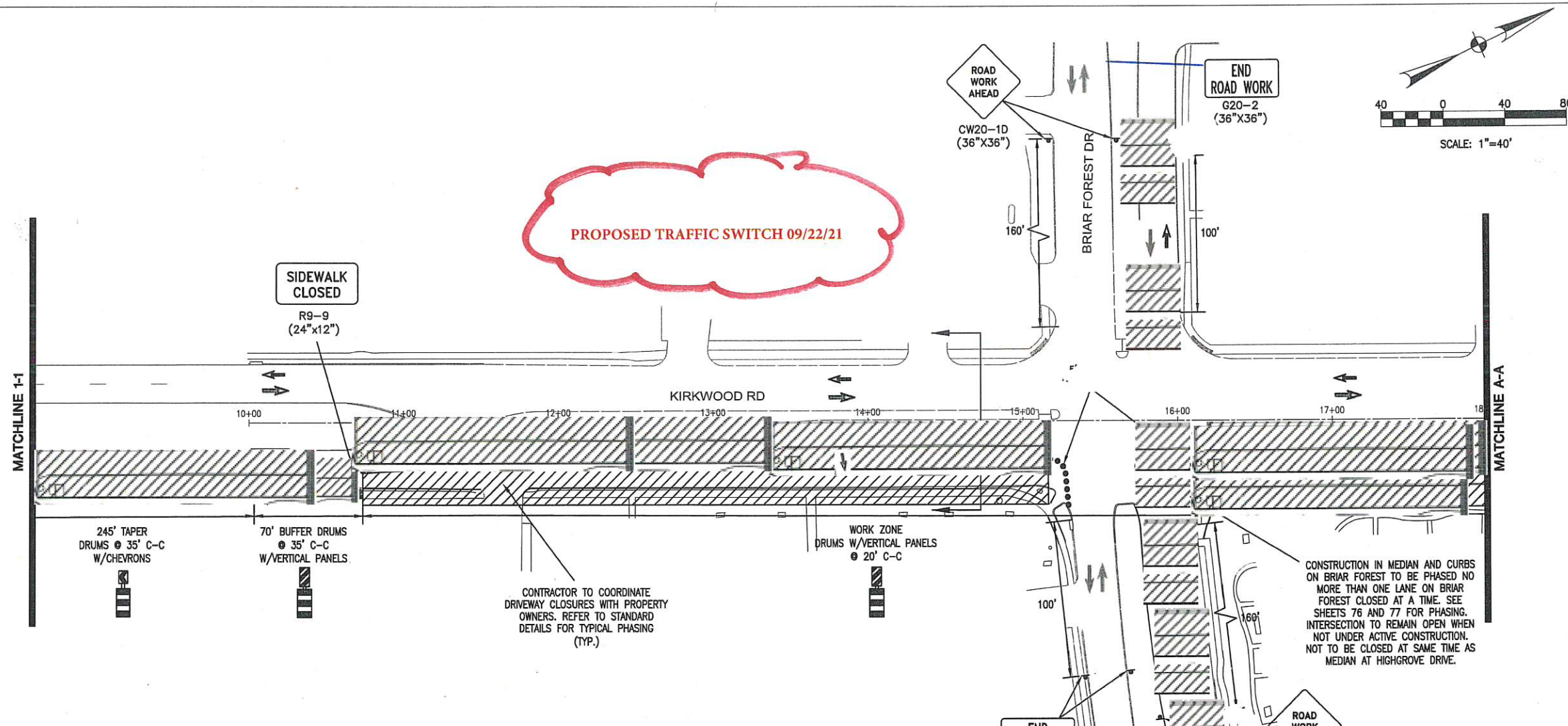
TRAFFIC CONTROL NOTES:

- CONTRACTOR SHALL PROVIDE AND INSTALL TRAFFIC CONTROL DEVICES IN CONFORMANCE WITH PART VI OF THE TEXAS MANUAL ON UNIFORM TRAFFIC CONTROL DEVICES (TEXAS MUTCO, MOST RECENT EDITION WITH REVISIONS) DURING CONSTRUCTION.
 - CONTRACTOR TO MAINTAIN ACCESS TO DRIVEWAYS AT ALL TIMES UNLESS APPROVED AND COORDINATED WITH PROPERTY OWNERS.
 - CONTRACTOR SHALL MAINTAIN TRAFFIC LANE(S) ACCORDING TO TRAFFIC CONTROL PLAN(S) DURING WORK HOURS.
 - OFF-DUTY UNIFORMED POLICE OFFICER(S)/FLAGGER(S) IS/ARE REQUIRED TO DIRECT TRAFFIC WHEN ADDITIONAL LANES ARE BLOCKED.
 - IF THE CONTRACTOR CHOOSES TO USE A DIFFERENT METHOD OF "TRAFFIC CONTROL PLANS" DURING THE CONSTRUCTION THAN WHAT IS OUTLINED IN THE CONTRACT DRAWINGS, (S)HE SHALL BE RESPONSIBLE TO PREPARE AND SUBMIT AN ALTERNATE SET OF PLANS* TO PLAN REVIEW SECTION FOR APPROVAL TEN WORKING DAYS PRIOR TO IMPLEMENTATION.
 - APPROVED COPIES OF "TRAFFIC CONTROL PLANS" AND LANE AND SIDEWALK CLOSURE PERMITS ** SHALL BE AVAILABLE FOR INSPECTION AT THE JOB SITE AT ALL TIMES.
 - CONTRACTOR SHALL FIELD VERIFY ALL MEASUREMENTS AND ACTUAL SITE CONDITIONS.
 - TRAFFIC CONTROL PLAN IS ONLY VALID IF IMPLEMENTED AS DESIGNED.
- * THESE PLANS SHALL BE DRAWN TO SCALE ON REPRODUCIBLE MYLARS AND SEALED BY A LICENSED ENGINEER IN THE STATE OF TEXAS. PLANS WILL BECOME A PART OF THE CONTRACT DRAWINGS.
- ** CONTRACTOR MUST SECURE "LANE/SIDEWALK CLOSURE PERMITS" FROM THE CITY OF HOUSTON BEFORE CLOSING A LANE/SIDEWALK. THE REQUEST MUST BE MADE AT LEAST TEN BUSINESS DAYS PRIOR TO DATE FOR WHICH THE CLOSURE IS SOUGHT. NOTE THAT WORKING HOURS MAY BE RESTRICTED OR THE REQUEST MAY BE DENIED. CALL 832-395-3020 FOR AN APPLICATION.

NO.	DATE	REVISIONS	APP.
Walter P. Moore and Associates, Inc. TBPE Firm Registration No. 1856			
 Cecil Warnie 2/6/2019			
TO ARRANGE FOR LINES TO BE TURNED OFF OR MOVED, CALL CENTERPOINT AT 713-207-2222.			
PRIVATE UTILITY LINES SHOWN AT LEAST 48 HOURS BEFORE EXCAVATING IN STREET ROW, OR EASEMENTS CALL THE LINE STAR NOTIFICATION 713-223-4597.			
<i>Remolone</i>		Date: 2.11.19	
CenterPoint Energy/Electric Facilities SIGNATURE INDICATES UNDERGROUND ELECTRIC LINES ARE PROPERLY SHOWN. NO APPROVAL FOR CONSTRUCTION IS GIVEN.			
Approved for AT&T underground conduit facilities only. Signature valid for one year.			
<i>Remolone</i>		Date: 2.11.19	
CenterPoint Energy/Gas Facilities/ENTEX INCORPORATED (Gas service lines are not shown)			
CABLE COMPANY			
WALTER P MOORE WALTER P. MOORE AND ASSOCIATES, INC. 1201 MCKINNEY, SUITE 1100 HOUSTON, TEXAS 77010 PHONE: 713.630.7300 FAX: 713.630.7399 TBPE FIRM REGISTRATION NUMBER 1856			
CITY OF HOUSTON HOUSTON PUBLIC WORKS			
KIRKWOOD PAVING AND DRAINAGE IMPROVEMENTS BRIAR FOREST TO BUFFALO BAYOU TRAFFIC CONTROL PLAN PHASE 3 (SHEET 1 OF 6)			
WBS NUMBER	FOR CITY OF HOUSTON USE ONLY		
N-100029-0001-4			
DRAWING SCALE			
VERT: AS NOTED			
HORIZ: AS NOTED			
CITY OF HOUSTON PM			
MOHD WARRAD, P.E.			
SHEET NO. 71 OF 139			



Feb 04, 2019 - 11:12am X:\M03\2019\11\12\am X:\M03\2019\11\12\am\COH\Kirkwood\Transp\Kirkwood-Cast\Non-Traffic\11-12-19\11-12-19-CP-Phase.03.dwg



NOTE:
The location of existing underground utilities are shown in an approximate way only. The contractor shall contact the Utility Coordinating Committee at 713-223-4557 or 1-800-669-8344 and the City of Houston Department of Public Works and engineering at 832-394-9098 a minimum of two working days prior to construction to field locate utilities. The contractor shall determine the exact location of all existing utilities before commencing work. He agrees to be fully responsible for any and all damages which might be occasioned by his failure to exactly locate and preserve any and all underground utilities.

CAUTION: UNDERGROUND GAS FACILITIES
Locations of CenterPoint Energy main lines (to include CenterPoint Energy, Intrastate Pipeline Inc. where applicable) are shown in an approximate location only. Service lines are usually not shown. Our signature on these plans only indicates that our facilities are shown in approximate location. It does not imply that a conflict analysis has been made. The contractor shall contact the Utility Coordinating Committee at 713-223-4557 or 1-800-669-8344 a minimum of 48 hours prior to construction to have main and service lines field located.
* When CenterPoint Energy pipe line markings are not visible, call 713-967-8037 (7:00 am to 4:30 pm). For status of line location request before excavation begins.
* When excavating within eighteen inches (18") of the indicated location of CenterPoint Energy facilities, all excavation must be accomplished using non-mechanized excavation procedures.
* When CenterPoint Energy facilities are exposed, sufficient support must be provided to the facilities to prevent excessive stress on the piping.
The contractor is fully responsible for any damages caused by the contractor's failure to exactly locate and preserve these underground facilities.

WARNING: OVERHEAD ELECTRICAL FACILITIES
Overhead lines may exist on the property. The location of overhead lines has not been shown on these drawings as the lines are easily visible, but you should locate them prior to beginning any construction. Texas law, Section 702, Health and Safety Code, forbids activities that occur in close proximity to high voltage lines, specifically any activities where persons or things may come within six (6) feet of live overhead high voltage lines and operating a crane, derrick, power shovel, drilling rig, pile driver, hoisting equipment, or similar apparatus within 10 feet of live overhead high voltage lines. Parties responsible for the work, including contractors, are legally responsible for the safety of construction workers under this law. This law carries both criminal and civil liability. To arrange for lines to be turned off or removed call CenterPoint Energy at 713-207-2222.

ACTIVITIES ON OR ACROSS CENTERPOINT ENERGY FEE OR EASEMENT PROPERTY
No approval to use, cross, or occupy CenterPoint fee or easement property is given, if you need to use CenterPoint property, please contact our Surveying & Right of Way Division at 713-207-5789

WARNING: AT&T TEXAS/SNET FACILITIES
The locations of AT&T Texas/SNET facilities are shown in an approximate way only. The contractor shall determine the exact location before commencing work. He agrees to be fully responsible for any and all damages which might be occasioned by failure to exactly locate and preserve these underground utilities. The contractor shall call 1-800-344-8377 a minimum of 48 hours prior to construction to have underground lines field located. When excavating within eighteen inches (18") of the indicated location of AT&T Texas/SNET facilities, all excavations must be accomplished using non-mechanized excavation procedures. When boring, the contractor shall expose the AT&T Texas/SNET facilities. When AT&T Texas/SNET facilities are exposed, the contractor will provide support to prevent damage to the conduit ducts or cables. When excavating near telephone poles the contractor shall brace the pole for support. The presence or absence of AT&T Texas/SNET underground conduit facilities does not mean that there are no direct buried cables in the area. Follow the Direct Buried Cable Procedure to locate the AT&T Texas/SNET buried cables as indicated in the AT&T Texas Research and Signature Process for AT&T Texas/SNET Facilities. Please contact the AT&T Texas Damage Prevention Manager Mr. Roosevelt Lee Jr. at 713-567-4352 or email him at R229@att.com. If there are questions about boring or excavating near our AT&T Texas/SNET facilities.

NO.	DATE	REVISIONS	APP.

Walter P. Moore and Associates, Inc.
TBPE Firm Registration No. 1856



Ceri J. Warnie 2/6/2019

TO ARRANGE FOR LINES TO BE TURNED OFF OR MOVED, CALL CENTERPOINT AT 713-207-2222

PRIVATE UTILITY LINES SHOWN
AT LEAST 48 HOURS BEFORE EXCAVATING IN STREET R.O.W. OR EASEMENTS CALL THE ONE STAR NOTIFICATION 713-223-4367.

Hmalone Date: 2.11.19

CenterPoint Energy/Electric Facilities
SIGNATURE INDICATES UNDERGROUND ELECTRIC LINES ARE PROPERLY SHOWN. NO APPROVAL FOR CONSTRUCTION IS GIVEN.

Approved for AT&T underground conduit facilities only. Signature valid for one year.
Hmalone Date: 2.11.19

CenterPoint Energy/Cas Facilities/ENTEX INCORPORATED
(Gas service lines are not shown)

CABLE COMPANY

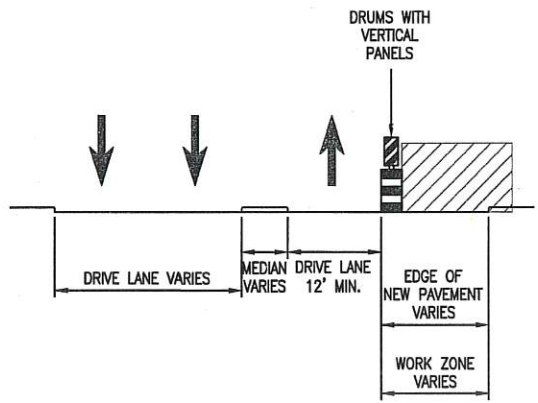
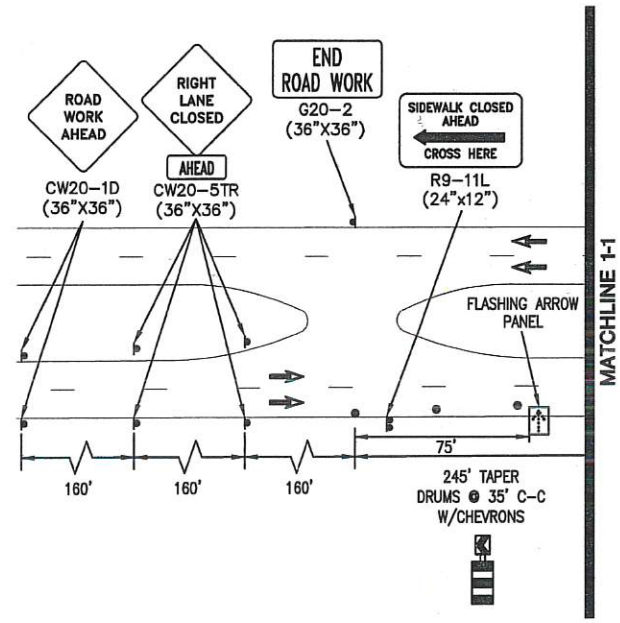
WALTER P MOORE
WALTER P. MOORE AND ASSOCIATES, INC.
1301 MCKINNEY, SUITE 1100
HOUSTON, TEXAS 77010
PHONE: 713.839.7390 FAX: 713.839.7399
TBPE FIRM REGISTRATION NUMBER 1856

CITY OF HOUSTON
HOUSTON PUBLIC WORKS

KIRKWOOD PAVING AND DRAINAGE IMPROVEMENTS BRIAR FOREST TO BUFFALO BAYOU

TRAFFIC CONTROL PLAN
PHASE 3
(SHEET 1 OF 6)

WBS NUMBER	FOR CITY OF HOUSTON USE ONLY
N-100029-0001-4	
DRAWING SCALE	
VERT: AS NOTED HORZ: AS NOTED	
CITY OF HOUSTON PM	
MOHD WARRAD, P.E.	
SHEET NO. 71 OF 139	



TYPICAL PHASE 3 CROSS-SECTION
N.T.S.

LEGEND:

	DRUM
	SELF RIGHTING MARKER
	LOW PROFILE CONCRETE BARRIER WITH REFLECTORS
	SIGN
	TYPE II BARRICADE
	TYPE III BARRICADE
	WORK ZONE
	FLASHING ARROW PANEL
	LANE OPEN FOR TRAFFIC
	FLAGGER

TRAFFIC CONTROL NOTES:

- CONTRACTOR SHALL PROVIDE AND INSTALL TRAFFIC CONTROL DEVICES IN CONFORMANCE WITH PART VI OF THE TEXAS MANUAL ON UNIFORM TRAFFIC CONTROL DEVICES (TEXAS MUTCD, MOST RECENT EDITION WITH REVISIONS) DURING CONSTRUCTION.
 - CONTRACTOR TO MAINTAIN ACCESS TO DRIVEWAYS AT ALL TIMES UNLESS APPROVED AND COORDINATED WITH PROPERTY OWNERS.
 - CONTRACTOR SHALL MAINTAIN TRAFFIC LANE(S) ACCORDING TO TRAFFIC CONTROL PLAN(S) DURING WORK HOURS.
 - OFF-DUTY UNIFORMED POLICE OFFICER(S)/FLAGGER(S) IS/ARE REQUIRED TO DIRECT TRAFFIC WHEN ADDITIONAL LANES ARE BLOCKED.
 - IF THE CONTRACTOR CHOOSES TO USE A DIFFERENT METHOD OF "TRAFFIC CONTROL PLANS" DURING THE CONSTRUCTION THAN WHAT IS OUTLINED IN THE CONTRACT DRAWINGS, (S)HE SHALL BE RESPONSIBLE TO PREPARE AND SUBMIT AN ALTERNATE SET OF PLANS* TO PLAN REVIEW SECTION FOR APPROVAL TEN WORKING DAYS PRIOR TO IMPLEMENTATION.
 - APPROVED COPIES OF "TRAFFIC CONTROL PLANS" AND LANE AND SIDEWALK CLOSURE PERMITS ** SHALL BE AVAILABLE FOR INSPECTION AT THE JOB SITE AT ALL TIMES.
 - CONTRACTOR SHALL FIELD VERIFY ALL MEASUREMENTS AND ACTUAL SITE CONDITIONS.
 - TRAFFIC CONTROL PLAN IS ONLY VALID IF IMPLEMENTED AS DESIGNED.
- * THESE PLANS SHALL BE DRAWN TO SCALE ON REPRODUCIBLE MYLARS AND SEALED BY A LICENSED ENGINEER IN THE STATE OF TEXAS. PLANS WILL BECOME A PART OF THE CONTRACT DRAWINGS.
- ** CONTRACTOR MUST SECURE "LANE/SIDEWALK CLOSURE PERMITS" FROM THE CITY OF HOUSTON BEFORE CLOSING A LANE/SIDEWALK. THE REQUEST MUST BE MADE AT LEAST TEN BUSINESS DAYS PRIOR TO DATE FOR WHICH THE CLOSURE IS SOUGHT. NOTE THAT WORKING HOURS MAY BE RESTRICTED OR THE REQUEST MAY BE DENIED. CALL 832-395-3020 FOR AN APPLICATION.