

Report

Subject: Inspection of Woodridge Village, Figure Four Partners, LTD (Perry Homes Development)

Observations:

- Construction site is wet from recent rains
- Construction equipment is gathering cleared trees and brush
- Chipping of brush and trees has begun
- Contractor has built a berm between Detention Pond #1 and #2
- No dust is detected on site
- Plans for detention ponds for future phases have been completed but construction has not begun
- South portion of construction site has been seeded and seeds are now germinating
- North portion of construction site has been seeded and seeds have begun to germinate
- Water in Taylor Gulley is turbid from recent rain
- Streets near Woodland Hills Drive are clean
- Storm sewer inlets require leaf removal
- Construction and silt fencing at Woodland Hills Drive median is well maintained
- Creek Manor Drive has been stabilized using curlex erosion control blanket and grass is well established
- End of Village Springs Drive, slope has been stabilized using curlex erosion control blanket and grass is well established
- Light sediment in gutters on Village Springs and Creek Manor Drive
- Harris County Flood Control has seeded Taylor Gulley levee and side slopes and grass is generally well established
- Silt fencing across Taylor Gulley is in acceptable shape
- Hay bales upstream on the outfall structure are in place and secured
- Hay bales downstream on the outfall structure remain in place and appear to be effective
- Some light silt has accumulated in outfall structure
- New back-slope drain has been installed at Detention Pond #1
- Sediment is present in back-slope drain
- Construction activity at Detention Pond #1 and Montgomery County Ditch is temporarily halted due to weather

Actions to be addressed:

- Continue to monitor construction site activities
- Continue to maintain outfall structure and silt fencing
- Initiate dust control measures on clear-cut area

Actions discussed with Figure Four Partners, LTD (Perry Homes):

- Figure Four Partners, LTD has swept Village Springs Drive, Creek Manor Drive and additional streets in the Elm Grove Subdivision
- Figure Four Partners, LTD (Perry Homes) has removed debris and stabilized disturbed areas at the end of Village Springs Drive
- Figure Four Partners, LTD (Perry Homes) has removed sediment and stabilized disturbed areas at the end of Creek Manor Drive
- Figure Four Partners, LTD (Perry Homes) has added hay bales upstream and downstream of outfall structure at Taylor Gulley as a Best Management Practice (BMP's) to reduce sediment migration
- Figure Four Partners, LTD (Perry Homes) has maintained hay bales on outfall structure
- Figure Four Partners, LTD (Perry Homes) has added a second silt fence across Taylor Gulley
- Figure Four Partners, LTD (Perry Homes) has maintained the existing silt fence across Taylor Gulley
- Figure Four Partners, LTD (Perry Homes) has stabilized clear-cut area
- Figure Four Partners, LTD (Perry Homes) continues to shred the trees and brush
- Figure Four Partners, LTD (Perry Homes) continues to inspect and maintain construction site entrance and storm sewer Inlets on Woodland Hills Drive

Schedule for actions:

- Figure Four Partners, LTD (Perry Homes) has removed debris and stabilized disturbed area at the end of Village Springs Drive; **completed**
- Figure Four Partners, LTD (Perry Homes) has removed sediment and stabilized disturbed area at the end of Creek Manor Drive; **completed**
- Grass seeds in the Curlex Blanket have germinated and is thriving; **installation is complete**
- Figure Four Partners, LTD (Perry Homes) has swept Village Springs Drive, Creek Manor Drive and additional streets in the Elm Grove Subdivision; **completed**
- Figure Four Partners, LTD (Perry Homes) has maintained hay bales at outfall structure at Taylor Gulley as a Best Management Practices (BMP's) to reduce sediment migration; **complete**
- Remove sediment from concrete approach and outfall structure at Taylor Gulley; **completed**
- South portion of construction site has been seeded and the seeds have germinated; **monitor**
- North portion of construction site has been seeded and the seeds have germinated; **monitor**
- Stabilize clear-cut area to reduce dust; **in progress**
- Maintain Silt fencing across Taylor Gulley and install additional layers of silt fencing; **complete**

12/30/2019

Photos:



Signage on Woodland Hills Drive



New Street to be Connected to Woodland Hills Drive



View of Construction Site Entrance on Woodland Hills Drive
Note: Light tracking



Median Protection on Woodland Hills Drive



Inlet Protection on Woodland Hills Drive



View of South Construction Area with Grass Stabilization

12/30/2019



View of Detention Pond #2 Looking Northeast
Note: Detention pond has not been stabilized



View of Silt Fencing in Good Repair



View of Intersection of Village Springs and Creek Manor Drive



Grass Stabilization is Well Established on Village Springs Drive



View of Detention Pond #1 Looking Northeast
Note: Pond is partially stabilized



View of Outfall of Montgomery County Flood Control Ditch to Taylor Gulley

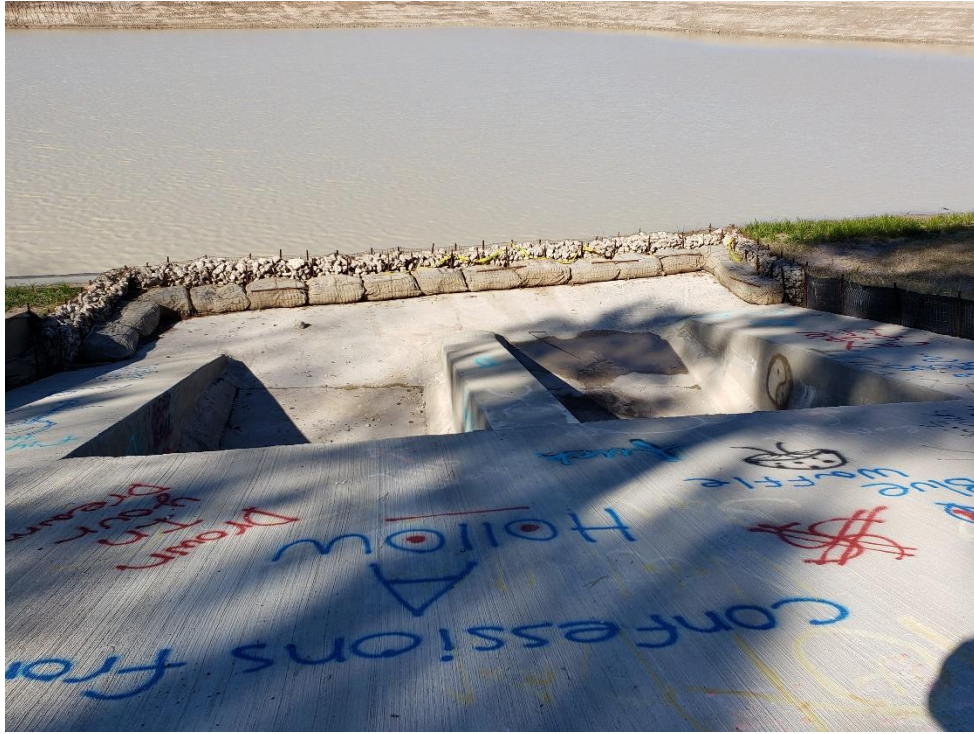


View of Outfall of Detention Pond #1 to Taylor Gulley
Note: Silt fences are well maintained



View of Outfall of Detention Pond #1 to Taylor Gulley
Note: Hay Bales are well maintained

12/30/2019



View of Upstream Outfall Structure from Detention Pond #1 to Taylor Gulley
Note: Hay bales are in place and well maintained



Portions of Detention Pond #1 Require Stabilization



Portions of Detention Pond #1 Are Stabilized



Overflow of Montgomery County Flood Control Ditch to Detention Pond #1



View of Montgomery County Flood Control Ditch with Concrete Slopes



Upstream Outfall of Montgomery County Flood Control Ditch to Taylor Gulley

12/30/2019



View of Detention Pond #1 Looking East



View of South Clear-cut Area with Grass Germinating



View of Former Equipment Staging Area



View of Fair Grove Drive Driveway to COH Well #6



View of Construction Entrance on Webb Road



View of Northern Clear-cut Area Looking East
Note: Light grass cover

12/30/2019



View of Northern Clear-cut Area Looking South
Note: All trees and brush have not been chipped