

Report

Subject: Inspection of Woodridge Village, Figure Four Partners, LTD (Perry Homes Development)

Observations:

- At the request of Figure Four Partners, LTD's representative, in future reports references to "Perry Homes" will be replaced by "Figure Four Partners, LTD" since they are the owners of the development and are funding the maintenance and modifications to the Best Management Practices (BMP's)
- No construction activity at this time
- Construction site continues to be muddy
- Streets near Woodland Hills Drive are clean
- Construction site entrance on Woodland Hills Drive has a small amount of silt / sediment
- Storm sewer inlets are clean and well maintained with a small amount of silt / sediment
- Construction and silt fencing at Woodland Hills Drive median is well maintained
- Most streets in Elm Grove are swept with little sediment
- Creek Manor Drive has some sediment to be removed and end slope has been stabilized using curlex erosion control blanket
- End of Village Springs Drive, slope has been stabilized using curlex erosion control blanket with some sediment to be removed
- Grass seeds in Curlex Blanket should germinate in approximately fourteen (14) days
- Debris behind barricade on Village Springs Drive has been removed
- Village Springs Drive and Creek Manor Drive have light sediment in gutter
- New silt fencing across Taylor Gulley has been added and existing silt fencing has been maintained
- Silt fencing at the top of the outfall structure at Taylor Gulley has been maintained
- Hay bales upstream on the outfall structure has been moved back into place, secured and reinforced
- Hay bales downstream on the outfall structure remain in place and are effective
- Some silt has been deposited in outfall structure

Actions to be addressed:

- Continue to sweep Village Springs Drive and Creek Manor Drive
- Continue to maintain outfall structure and silt fencing
- Dust control measures on clear-cut area

Actions discussed with Figure Four Partners, LTD (Perry Homes):

- Figure Four Partners, LTD (Perry Homes) will continue to sweep Village Springs Drive and Creek Manor Drive
- Figure Four Partners, LTD (Perry Homes) has removed debris and stabilized disturbed areas at the end of Village Springs Drive
- Figure Four Partners, LTD (Perry Homes) has removed sediment and stabilized disturbed areas at the end of Creek Manor Drive
- Figure Four Partners, LTD (Perry Homes) has added hay bales upstream and downstream of outfall structure at Taylor Gulley as a Best Management Practice (BMP's) to reduce sediment migration
- Figure Four Partners, LTD (Perry Homes) has maintained hay bales on outfall structure
- Figure Four Partners, LTD (Perry Homes) has added a second silt fence across Taylor Gulley
- Figure Four Partners, LTD (Perry Homes) has maintained the existing silt fence across Taylor Gulley
- Stabilize clear-cut area to reduce dust

Schedule for actions:

- Figure Four Partners, LTD (Perry Homes) will continue to sweep Village Springs Drive and Creek Manor Drive; **continuing currently**
- Figure Four Partners, LTD (Perry Homes) has removed debris and stabilized disturbed area at the end of Village Springs Drive; **completed**
- Figure Four Partners, LTD (Perry Homes) has removed sediment and stabilized disturbed area at the end of Creek Manor Drive; **completed**
- Grass seeds in the Curlex Blanket will take approximately fourteen (14) days to germinate; **installation is complete**
- Figure Four Partners, LTD (Perry Homes) has added hay bales to outfall structure at Taylor Gulley as a Best Management Practices (BMP's) to reduce sediment migration; **complete**
- Remove sediment from concrete approach and outfall structure at Taylor Gulley; **completed, but requires re-inspection**
- Stabilize clear-cut area to reduce dust; **immediately upon completion of debris removal**
- Maintain Silt fencing across Taylor Gulley and install additional layers of silt fencing; **complete**

Photos:

11/1/2019



Signage on Woodland Hills Drive



New Street to be Connected to Woodland Hills Drive



Construction Site Entrance on Woodland Hills Drive
Note: Light sediment



Median Protection on Woodland Hills Drive

11/1/2019



Inlet Protection on Woodland Hills Drive
Note: Small amount of silt accumulation



View of Detention Pond #2 Looking Northeast

11/1/2019



View of Village Springs and Creek Manor Drive



View of Village Springs Drive

Note: Area is stabilized with a small amount of sediment

11/1/2019



View of Village Springs Drive with Curlex Blanket Stabilization
Note: Debris has been removed



View of Detention Pond #1 Looking Northeast



View of Creek Manor Drive with Curlex Blanket Stabilization



View Looking South along Taylor Gulley



View Looking North along Taylor Gulley

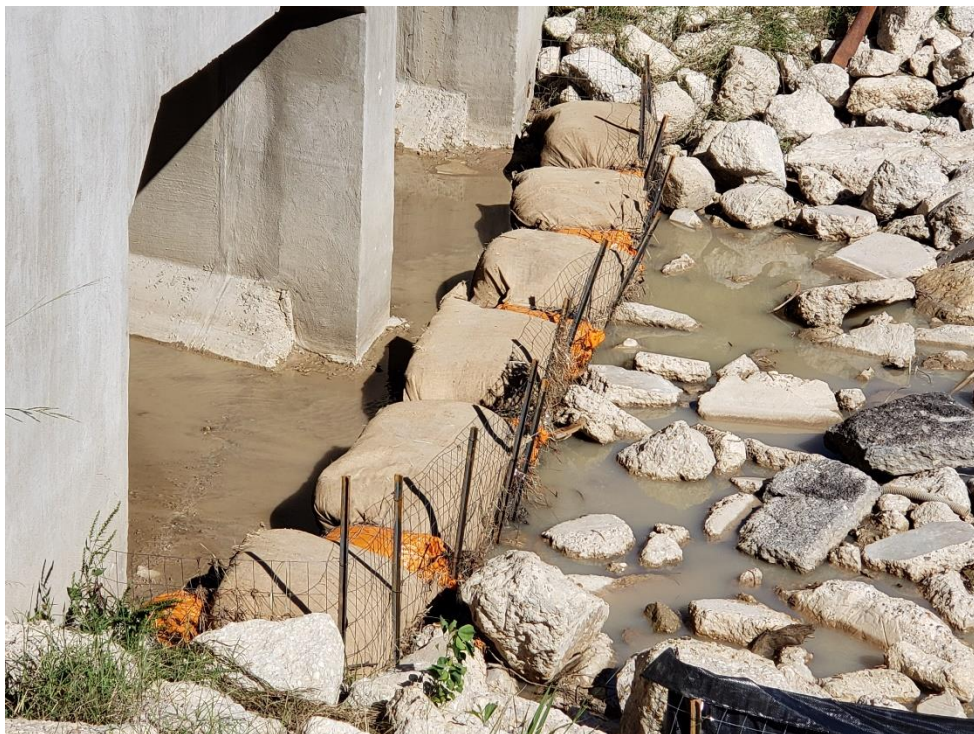


Discharge from Montgomery County Drainage Ditch to Taylor Gulley

11/1/2019



Detention Pond #1 Outfall Structure to Taylor Gulley
Note: Hay bales and double silt fencing added



Close View of Hay Bales

11/1/2019



Repaired and Maintained Silt Fencing



Detention Pond #1 Upstream Outfall Structure to Taylor Gulley
Note: Hay bales have been maintained and secured

11/1/2019



Close View of Hay Bales Secured to Gabions



Shallow Sediment Accumulation in Outfall Structure

11/1/2019



View of Detention Pond #1 Looking West
Note: Some stabilization on south slope



End of Fair Grove Drive



View of Idle Equipment Looking West



Well Maintained Silt Fencing

11/1/2019



View of Detention Pond #1 Looking East
Note: Partial stabilization in bottom of pond