



NEARMAP AERIAL IMAGERY TECHNOLOGY

HOUSTON PUBLIC WORKS

ANTHONY POWELL - GIS MANAGER



PURPOSE

together we create a strong foundation
for Houston to thrive



5 TO THRIVE VALUES

integrity | teamwork | ownership | communication | respect

NEARMAP AERIAL IMAGERY

GEOSPATIAL CONTENT AS A SERVICE FOR BUSINESS AND GOVERNMENT AGENCIES

Nearmap is a technology company, driven by innovation. They are a next-gen digital content leader and aerial technology company. Nearmap helps streamline workflows by providing seasonal updates to imagery and AI-derived datasets. It allows you to easily locate areas and assess conditions needed to support informed decision making.

3 WAYS TO ADVANCE SUSTAINABILITY WITH AERIAL IMAGERY
Learn how to advance sustainability to construction, city planning and natural disaster response with our imagery.

ACCESS TOTAL LOCATION INTELLIGENCE
Nearmap gives you every dimension of location intelligence in one search tool. Our geospatial mapping technology allows you to find, measure, understand and act on an entire location and virtually explore a 360° view of the assets that fuel your business decisions.

Using Nearmap, it's possible to access real insights, such as:

- Current and historic location updates
- Accurate depth and height measurements
- Automated license identification with AI tools

NOW AVAILABLE: NEARMAP ROOF CONDITION ASSESSMENT
Instantly determine roof condition and risk with a new multi-band assessment.

ACCESS TOTAL LOCATION INTELLIGENCE
Nearmap gives you every dimension of location intelligence in one search tool. Our geospatial mapping technology allows you to find, measure, understand and act on an entire location and virtually explore a 360° view of the assets that fuel your business decisions.

Using Nearmap, it's possible to access real insights, such as:

- Current and historic location updates
- Accurate depth and height measurements
- Automated license identification with AI tools

HIGH RESOLUTION, UP-TO-DATE AERIAL MAPS
Project, transport, or analyze location data from virtually anywhere. High-resolution aerial maps help you to plan and manage your project.

ACCESS TOTAL LOCATION INTELLIGENCE
Nearmap gives you every dimension of location intelligence in one search tool. Our geospatial mapping technology allows you to find, measure, understand and act on an entire location and virtually explore a 360° view of the assets that fuel your business decisions.

Using Nearmap, it's possible to access real insights, such as:

- Current and historic location updates
- Accurate depth and height measurements
- Automated license identification with AI tools

NEARMAP FOR GOVERNMENT

PRODUCT SPECIFICATIONS

Nearmap is a subscription-based service with flexible options tailored to suit the city needs. Users will always have access to reliable and current imagery for better decision making.



VERTICAL / ORTHO



PANORAMA



OBLIQUE



3D VIEWER

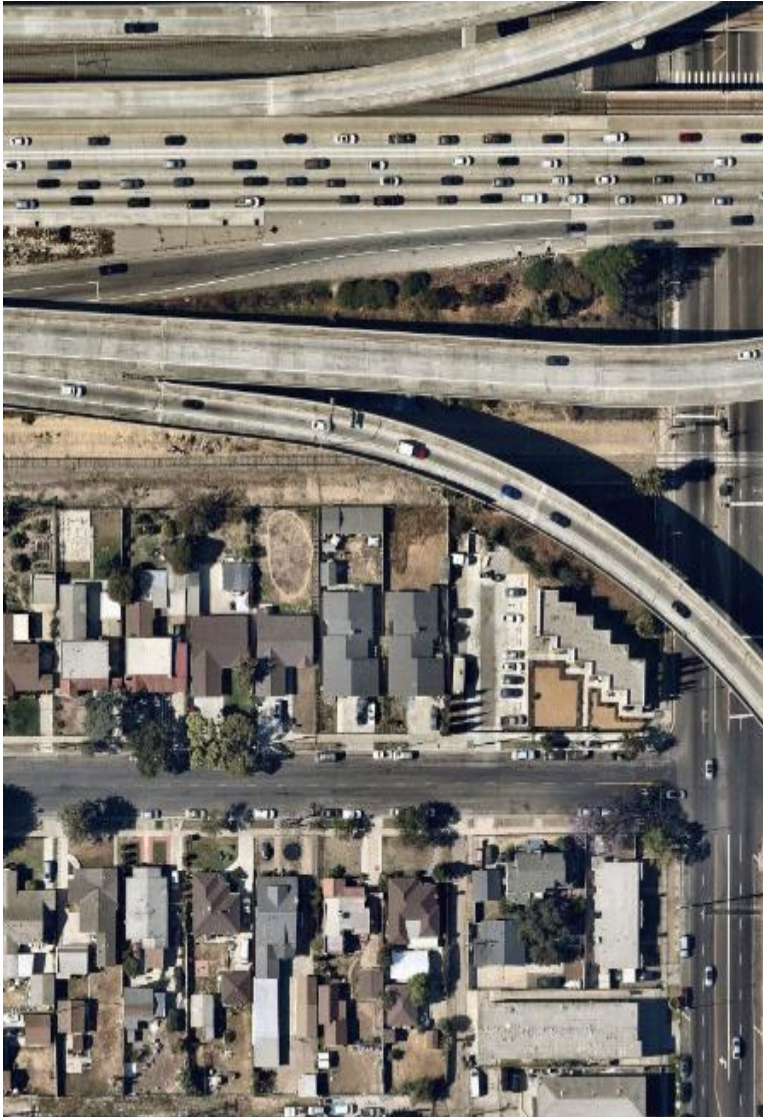


3D EXPORT



AI DATASETS

WHAT MAKES NEARMAP SPECIAL



PROACTIVE SURVEY PROGRAM

Continuously capturing aerial imagery throughout the United States, 365 days a year. All imagery is loaded into a web-based application that is time stamped and available within days of its capture.



CURRENT IMAGERY

Fly large urban areas up to 3 times per year, frequently capturing seasonal changes for leaf-on / leaf-off information



WIDE-SCALE COVERAGE

Covers 80% of the US population, including over 1,740 urban areas with over 308,000 square miles captured annually



CONSISTENTLY HIGH RESOLUTION

Ortho and oblique imagery is delivered at sub-3" resolution, meaning you can see clearly and plan accurately before setting foot on site.



INSTANT ACCESS VIA THE CLOUD

Instantly stream high resolution aerial imagery from Nearmap on any connected device via their web platform using a Map Browser, or integrated into GIS software through APIs. Easily view, measure and export Nearmap content.

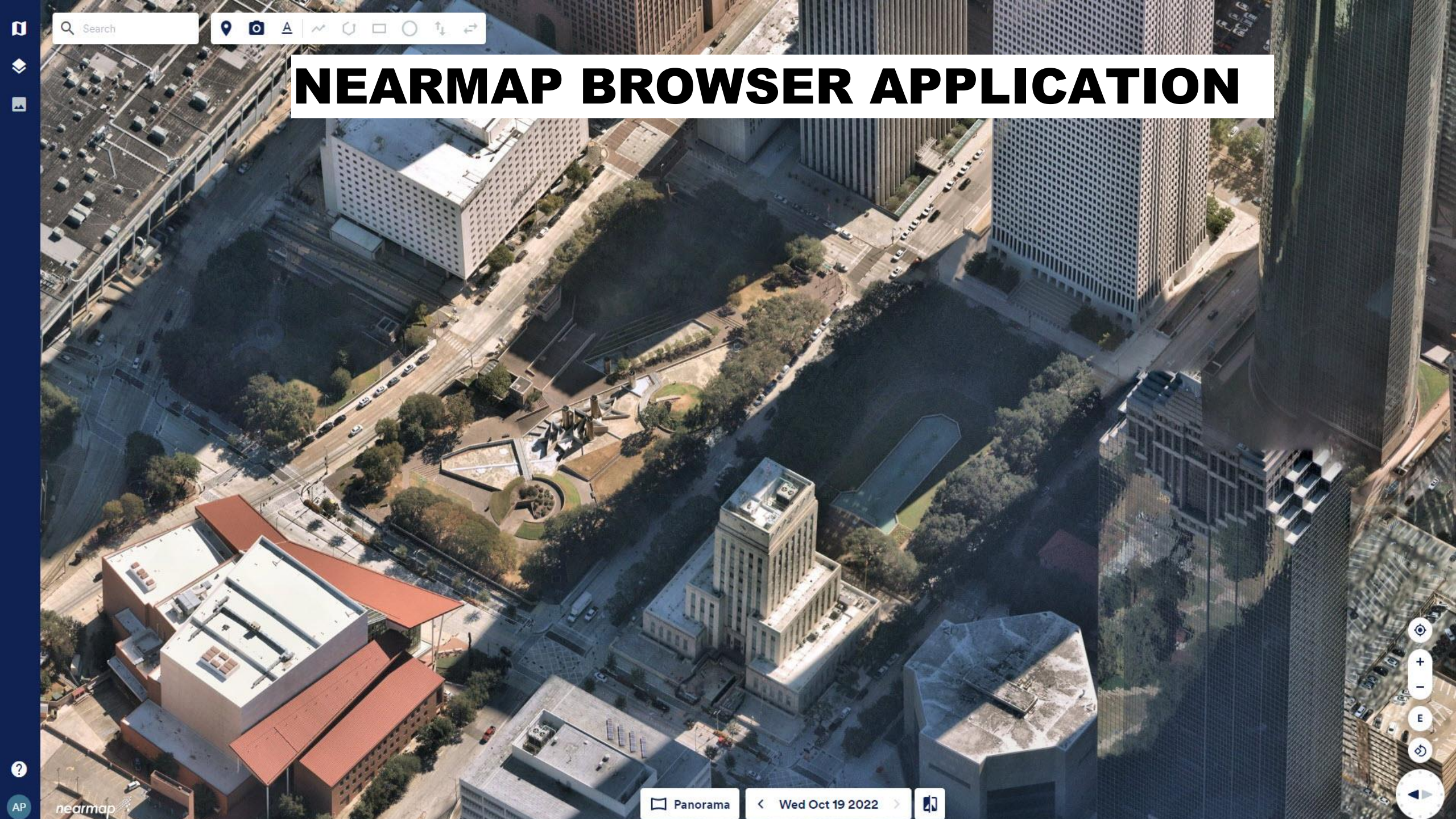
NEARMAP FOR PUBLIC WORKS

CURRENT SOLUTION

- Houston Galveston Area Council agreement (Managed by PD)
- High-resolution Imagery provided every 2.5yrs
- Heavy data driven deliverables
- Manual delivery process
- Requires on-site data storage cost
- Requires data processing
- Integrates with Esri GIS solutions

IMPROVEMENTS

- High-resolution Imagery captured 3 times within each calendar year
- AI data sets: impervious surfaces, vegetation, building footprints, pools, construction changes and more
- Easy to use, general user, browser based
- Simple integrations with ALL Esri/GIS and CAD solutions
- Integrates with existing workorder solutions and others
- Software As A Service solution
- No need for on-site storage
- Real-time access to historical imagery



Search



NEARMAP BROWSER APPLICATION



Panorama

Wed Oct 19 2022



WORKSPACE ←

Search

Feature Layers + ^

- Untitled Group 2
- Untitled Group 1
- ~ Line 1
- Polygon 1
- 📍 Location

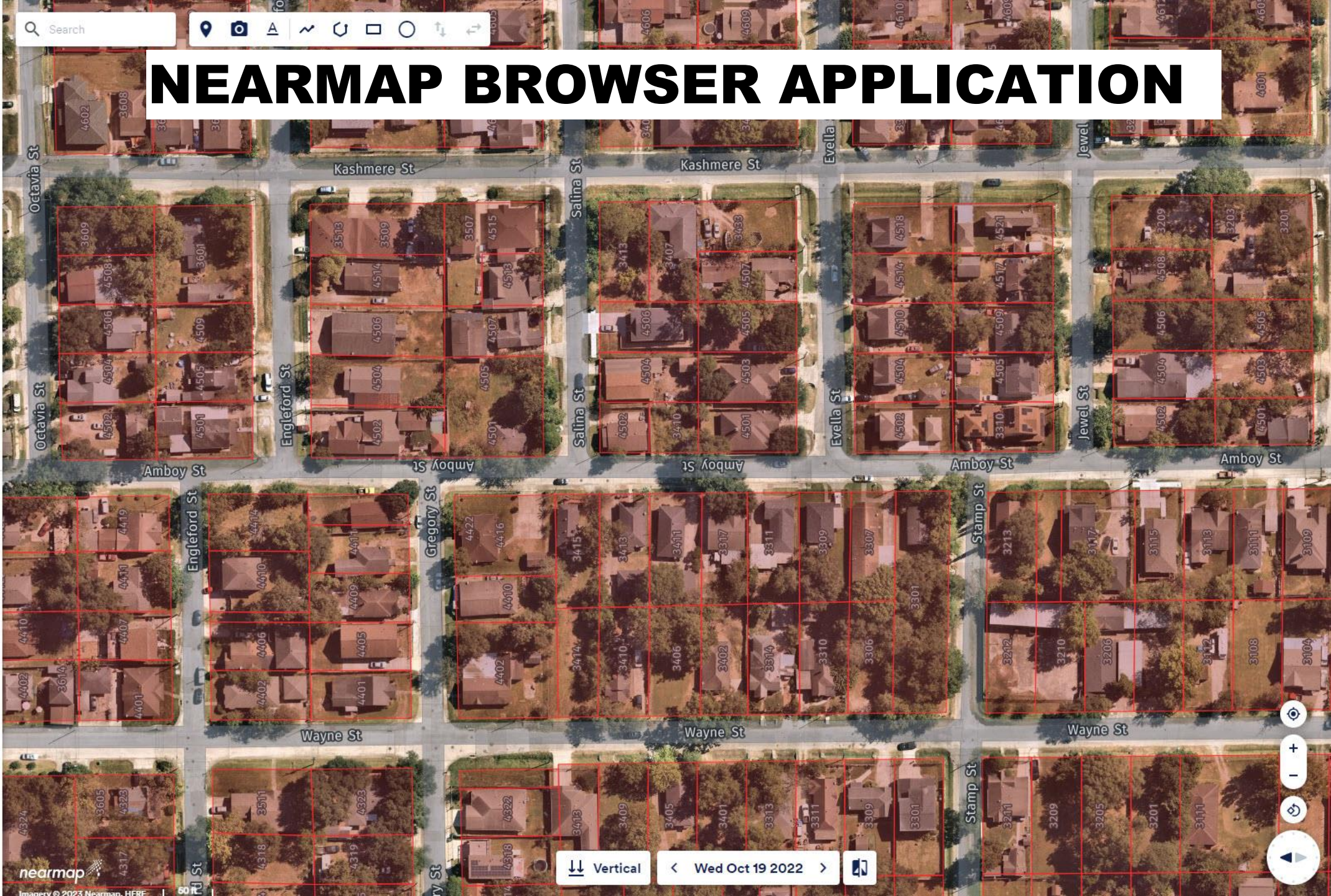
Data Layers ^

- Boundaries
- Roads Overlay

nearmap

Imagery © 2023 Nearmap, HERE

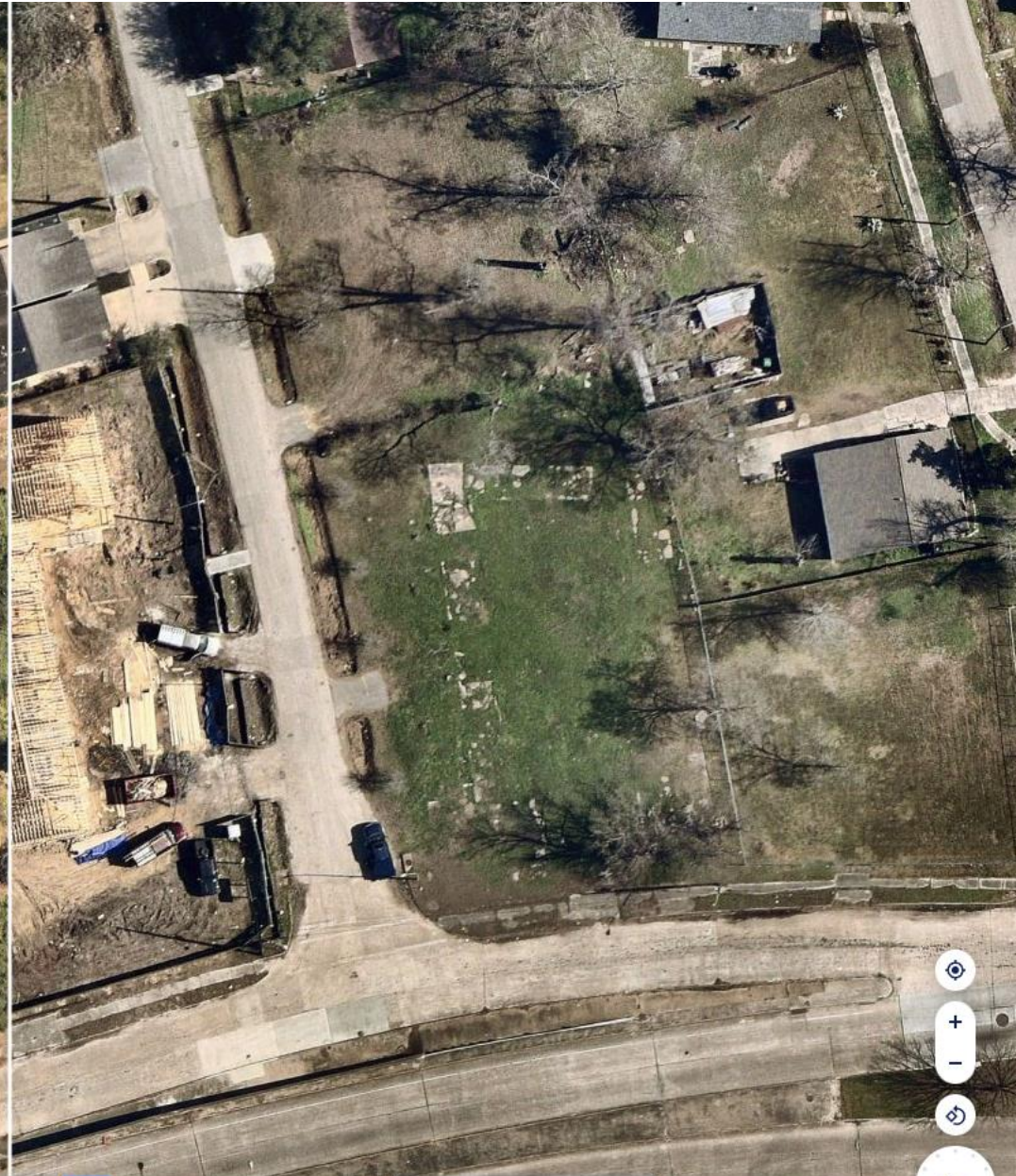
NEARMAP BROWSER APPLICATION



NEARMAP - CHANGE DETECTION

- Feature Layers** + ^
- Untitled Group 2
 - Untitled Group 1
 - ~ Line 1
 - Polygon 1
 - 📍 Location

- Data Layers** ^
- Boundaries
 - Roads Overlay
- ?
- AP



NEARMAP - IMAGERY OF EVENTS CAPTURED



nearmap

BUDGET FORECAST

	2023-2024	2024-2025	2025-2026	2025-2027	Total
	\$ 225,000.00	\$ 225,000.00	\$ 247,500.00	\$ 272,250.00	\$ 969,750.00
10% increase of services		\$ 22,500.00	\$ 24,750.00	\$ 27,225.00	\$ 47,250.00
Total per YR	\$ 225,000.00	\$ 247,500.00	\$ 272,250.00	\$ 299,475.00	\$1,044,225.00

- HPW has been a yearly subscriber since 2021
- Establishing a 4yr agreement
- 10% increase future for enhancements

**Questions?
Thank You!**



HoustonPublicWorks.org



@HouPublicWorks