

MTFP

MAJOR THOROUGHFARE AND FREEWAY PLAN

Transportation Technology and Infrastructure (TTI) Committee Meeting

September 9, 2021



PLANNING &
DEVELOPMENT
DEPARTMENT

What is the MTFP?

The MTFP is a long-range right-of-way (ROW) requirement plan to **preserve adequate ROW** for the orderly and efficient expansion of the transportation network.

The Purposes of the MTFP

SAFETY & EFFICIENCY

To ensure safe and efficient development of the roadway system/street grid to accommodate new development, improve connectivity, mitigate congestion, serve mobility and access needs of the public.

PRESERVING MOBILITY

The transportation network forms the basis for preserving existing mobility in developed areas (network preservation) and accommodating future mobility in undeveloped and underdeveloped areas (network creation).

The MTFP Region

The MTFP impact area includes nearly 2,000 square miles

- properties within the city limits
- most of the unincorporated area in Harris County
- portions of Fort Bend, Waller, Montgomery, and Liberty Counties

What is the MTFP?

1

A LIVING PLAN

The MTFP was originally adopted in 1942 and continues to evolve.

- It is a working document, consistently being refined
- It has a daily impact on growth and development of the City and its extraterritorial jurisdiction

2

ORDINANCES

The MTFP is guided by the City's Code of Ordinances:

- Houston Code of Ordinances (Chapters 33 and 42)
- The Infrastructure Design Manual (IDM)
- MTFP Policy Statement (Amended in March 2015)

3

COORDINATED

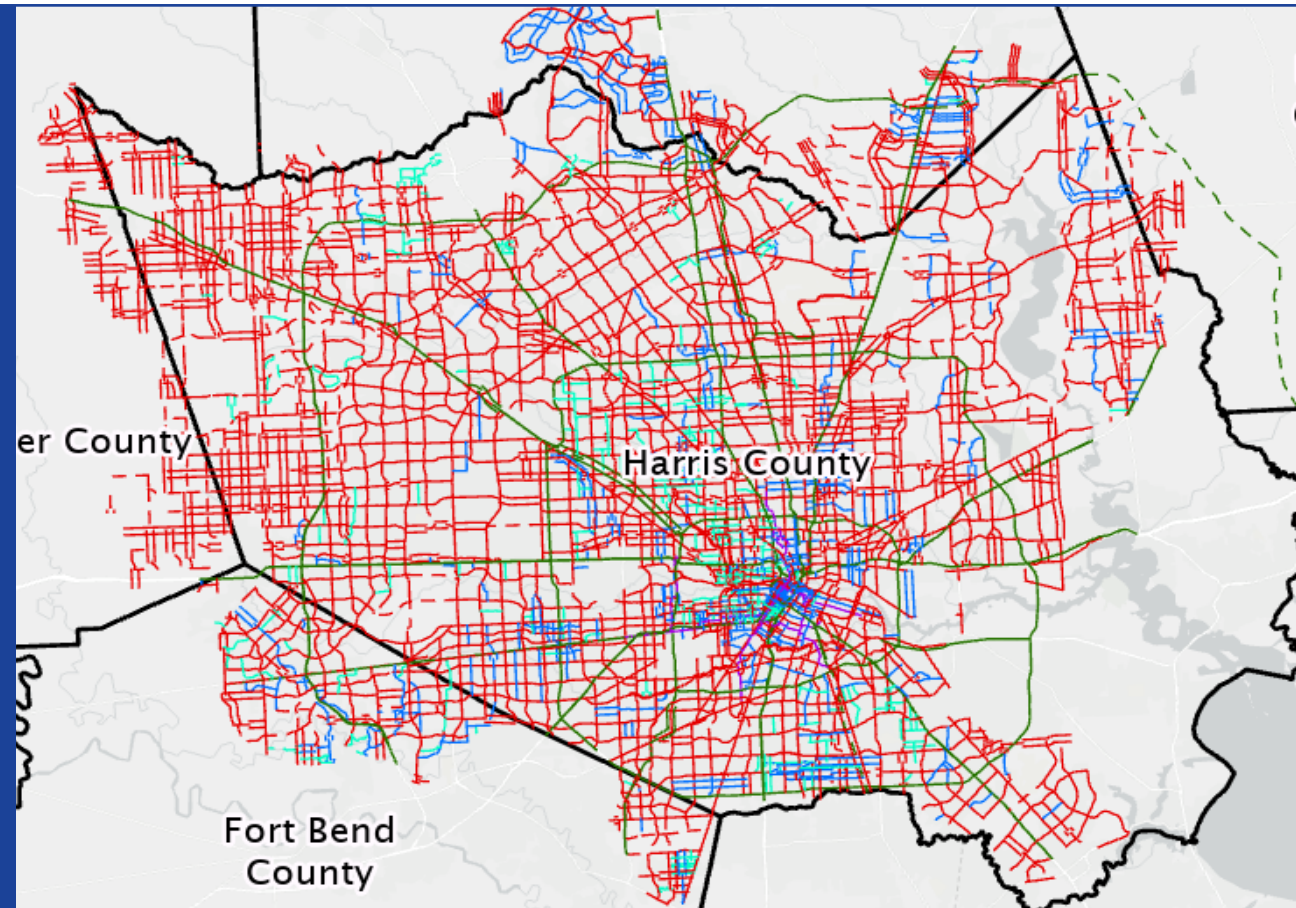
The MTFP has been accepted by other governmental agencies:

- District Offices of the Federal Highway Administration (FHWA)
- Texas Department of Transportation (TxDOT)

Component #1: MTFP Map

MTFP MAP

Graphically presents the location of roadway alignments – existing and proposed – to preserve existing ROW and identify where ROW must be dedicated during future development activity.



Component #2: Street Classification Table

STREET TYPES

MTFP Street Hierarchy Classification Table defines street segments as:

- Principal Thoroughfares
- Transit Corridor Streets
- Major Collectors
- Minor Collectors

Streets are coded by:

- Function
- Number of lanes for projected traffic volume
- The required ROW for the street

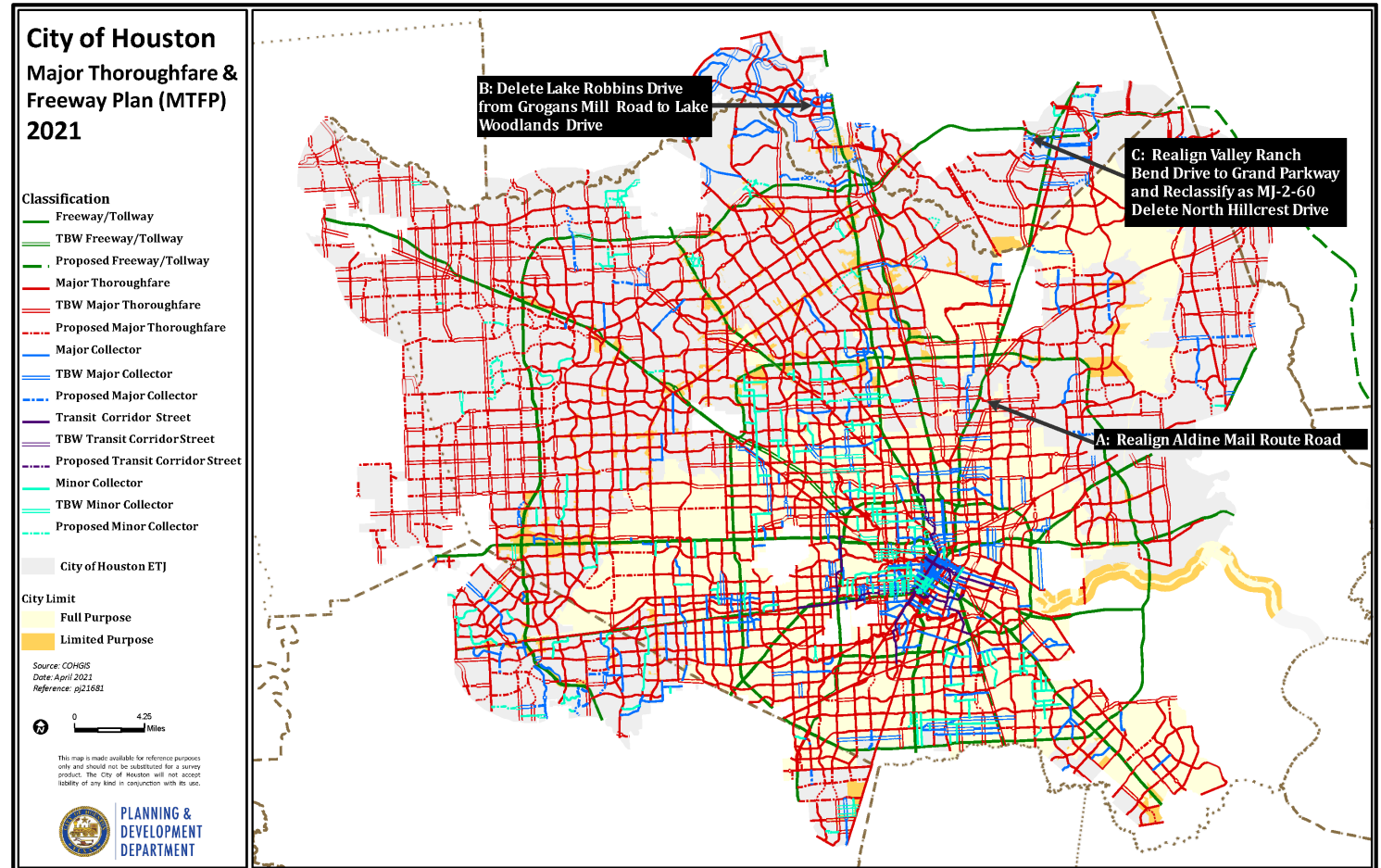
2021 MTFP STREET HIERARCHY CLASSIFICATION TABLE
(Street Right-of-Way Identified within Houston's City Limits)

Legend							
<i>Example: P-6-100</i>							
P: Principal Thoroughfare	6	100					
T: Major Thoroughfare	Projected number of lanes	Minimum right-of-way width					
MJ: Major Collector							
MN: Minor Collector							
* For more details and definitions, refer to the MTFP Policy Statement							
Street	Segment	Classification					
Addicks-Howell	SH 6 to Katy Fwy	MN	-	2	-	80	
	Burke to Challenger	T	-	4	-	100	
Aerospace, N.	N. Main to Cavalcade	T	-	4	-	80	
	Cavalcade to North Loop	T	-	4	-	80	
Airline	North Loop to Crosstimbers	T	-	4	-	80	
	Crosstimbers to North Fwy.	T	-	4	-	80	
	North Fwy. to Berry	T	-	4	-	80	
	Berry to Tidwell	T	-	4	-	80	
	Tidwell to Parker	T	-	4	-	80	
	Parker to Little York	T	-	4	-	80	
	Little York to Carby	T	-	4	-	80	
	West to Aldine-Bender	T	-	4	-	100	
	Airport	Easthaven to Gulf Fwy.	P	-	6	-	100
		Gulf Fwy. to W. Monroe	P	-	6	-	100
		W. Monroe to Broadway	P	-	6	-	100
		Broadway to Telephone	P	-	6	-	100
Telephone to Mykawa		P	-	6	-	100	
Mykawa to Martin Luther King		P	-	6	-	100	
Martin Luther King to Cullen		P	-	6	-	100	
Cullen to Scott		P	-	6	-	110	
Scott to South Fwy.		P	-	6	-	100	
South Fwy. to Alameda		P	-	6	-	100	
Alameda to Buffalo Speedway		P	-	6	-	100	
Buffalo Speedway to Hiram Clarke		P	-	6	-	100	
(Allum)	Hiram Clarke to S. Post Oak	P	-	6	-	100	
	S. Post Oak to S. Main	P	-	6	-	100	
	S. Main to Chimney Rock	P	-	6	-	100	
	Chimney Rock to Hillcroft	P	-	6	-	100	
	Hillcroft to Fondren	P	-	6	-	100	
	Fondren to Gessner	P	-	6	-	100	
	Gessner to Beltway 8	P	-	6	-	100	
	Beltway 8 to Ft. Bend Co.	P	-	6	-	100	
	Alabama	Scott to Tierwester	MJ	-	4	-	80
		Tierwester to Ennis	MJ	-	4	-	80
		Ennis to Dowling	MJ	-	4	-	80
		Dowling to South Fwy.	MJ	-	4	-	70

Component #3: MTFP Amendment Process

AMENDMENTS

- Amendments can be recommended by City Staff, or other governmental agencies, landowners, or developers with property adjacent to the designated MTFP Alignment.
- Aside from City, others must submit an application during the established MTFP Amendment Process.
- All amendments must be considered by the Planning Commission.
- After consideration, amendments are forwarded to City Council by September 30th.



MTFP 2021- Proposed Amendments

2021 MTFP Amendment Process Timeline

The MTFP is updated annually through a process that runs from January to September.

Applicants and Transportation Planning Staff present proposed amendments to the Planning Commission.



Terminology: Street Classification

Street Classification

Principal Thoroughfare (**P**)

Thoroughfare (**T**)

Major Collector (**MJ**)

Minor Collector (**MN**)

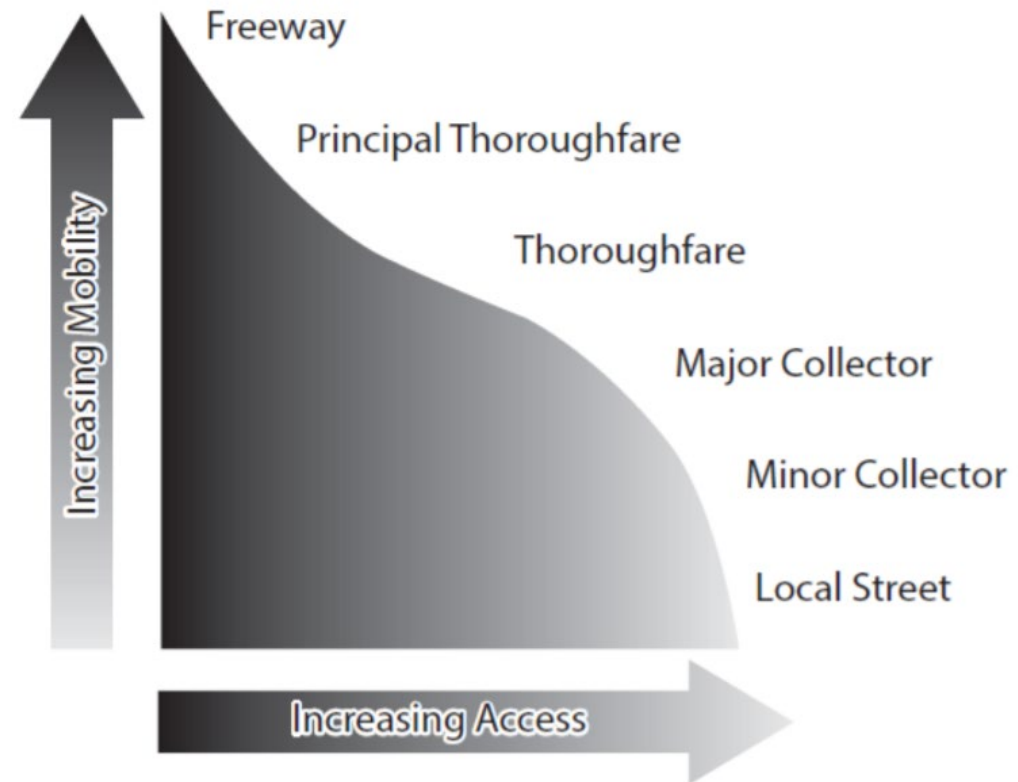
Transit Corridor Street (**TCS**)

Example: **T-4-100**

T Street classification

4 Number of vehicular through lanes

100 Required right-of-way width (feet)

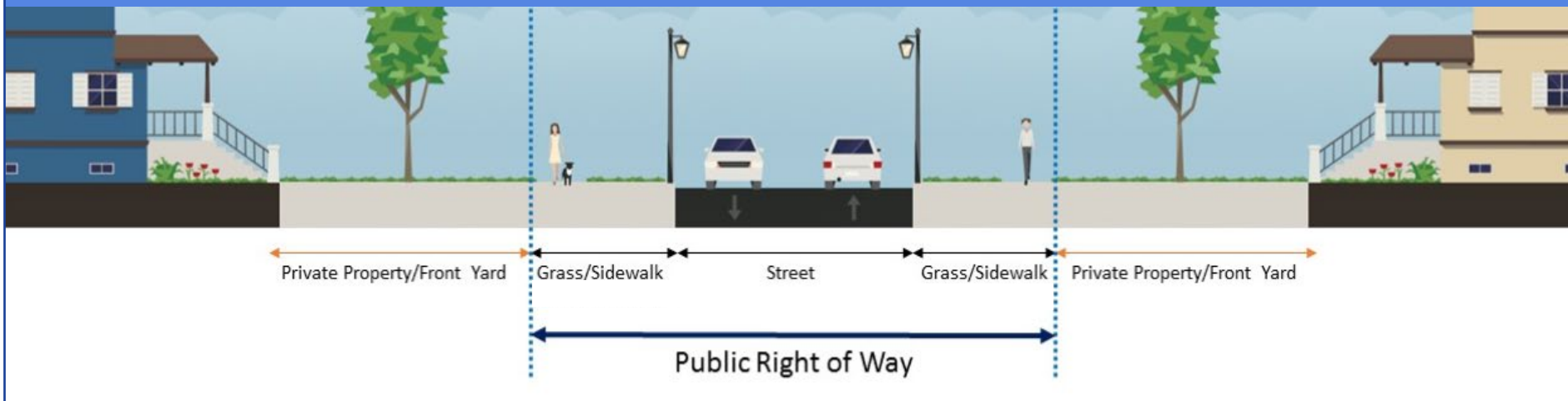


Terminology: Right-of-Way

Right-of-Way (ROW)

Area from property line to property line, including:

- Landscaping
- Sidewalks
- Utilities
- Bike lanes
- Parking
- Travel lanes








Terminology: Existing vs MTFP Classification

Existing Conditions vs. MTFP Classification

Name	2020 MTFP Classification	Existing Conditions	Proposed MTFP Classification
Bayou Drive	T-4-100	80' ROW, 2 lanes	MJ-2-80

MTFP Map Legend

-  Freeway
-  Principal Thoroughfare or Thoroughfare
-  Major Collector
-  Minor Collector
-  Transit Corridor Street

Next Steps

2021 MTFP Amendments

- Previously approved by the Planning Commission on 9/2/21.
- Forwarded to City Council for 9/22/21.

For More Information

To review the MTFP proposed amendments please visit the MTFP Website:

https://www.houstontx.gov/planning/transportation/21_MTFPRequests.html

Email us: mobility.planning@houstontx.gov

Transportation Planning Division: 832.393.6660

Questions?

Thank You



PLANNING &
DEVELOPMENT
DEPARTMENT

832-393-6600 | www.houston.tx.gov/planning