



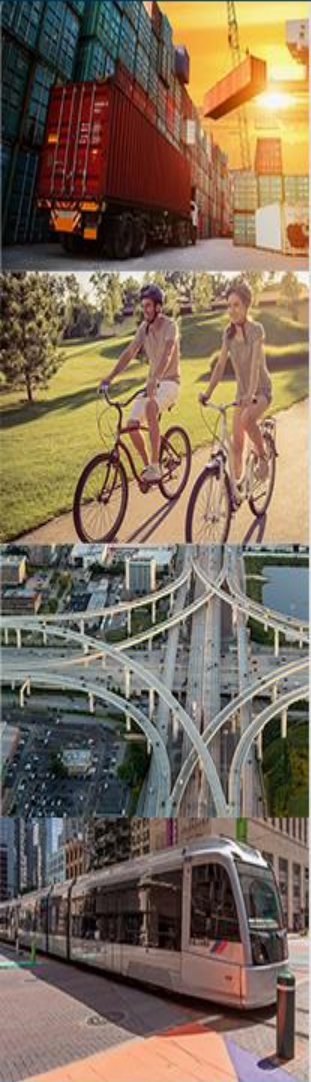
Houston-Galveston Area Council's Regional Growth Forecast



Pramod Sambidi, PhD
Houston-Galveston Area Council

Houston City Council TTI Committee, February 12, 2018

Socio-Economic Modeling



- ❖ Manage Regional Data (Demographic, Economic, and Real Estate)
- ❖ Produce Regional Growth Forecast (Population, Employment and Land Use)
- ❖ Develop Interactive Tools and Web Mapping Applications
- ❖ Provide Informational Services and Analytical Support

Forecast Methodology

Generate annual (2015-2045) population, households, and jobs (regional totals)

Translate into annual demand for housing and non-residential space (regional totals)

Generate annual supply of new residential and non-residential buildings (parcel-specific)

Assign people and jobs to buildings

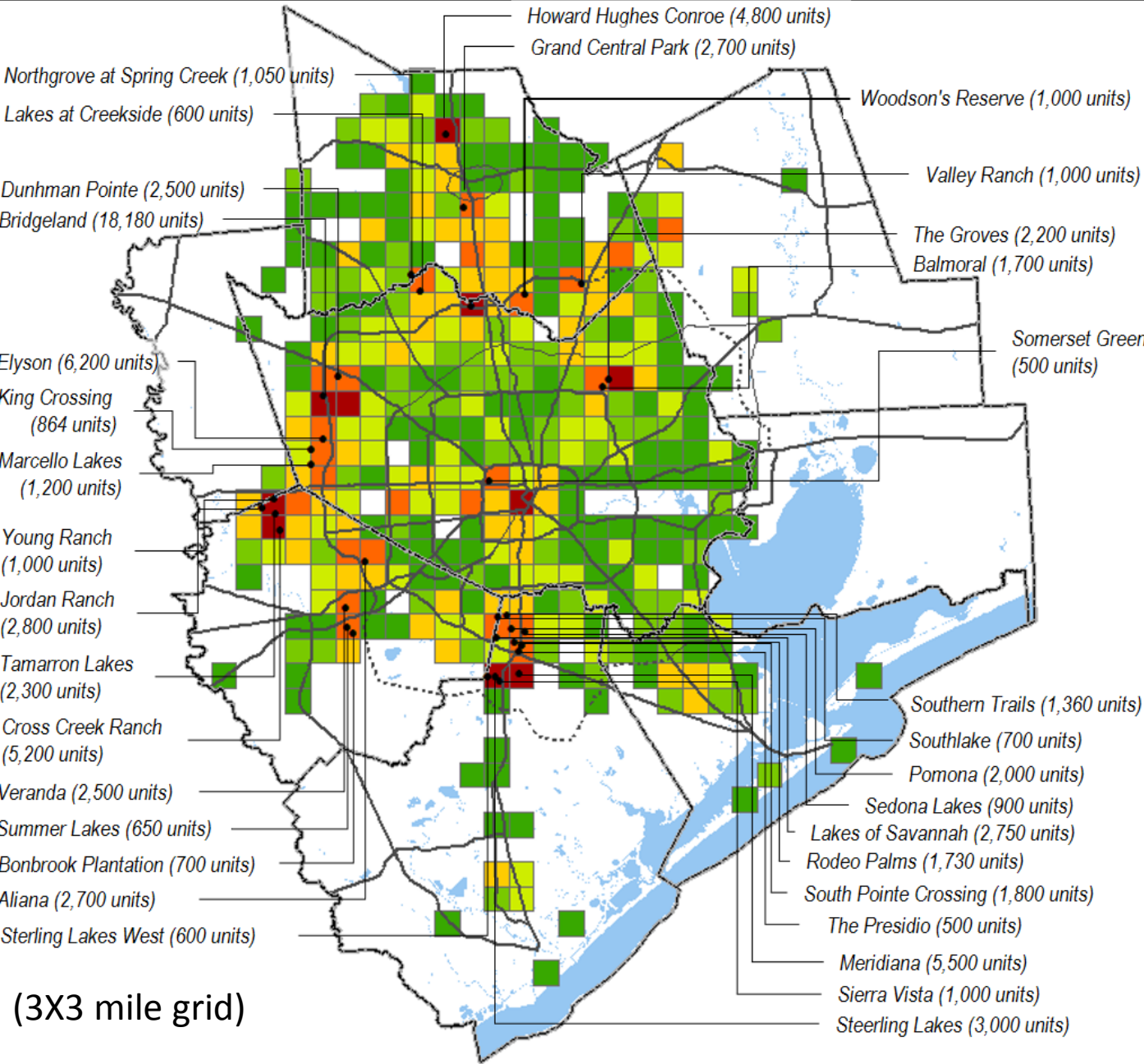
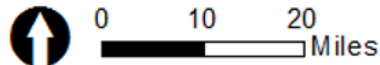
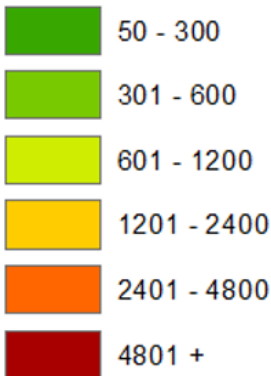
Sum up to get area-wide counts for any geography (e.g., county, census tract, TAZ, zip code)

Announced Residential Developments (2015- 2045)

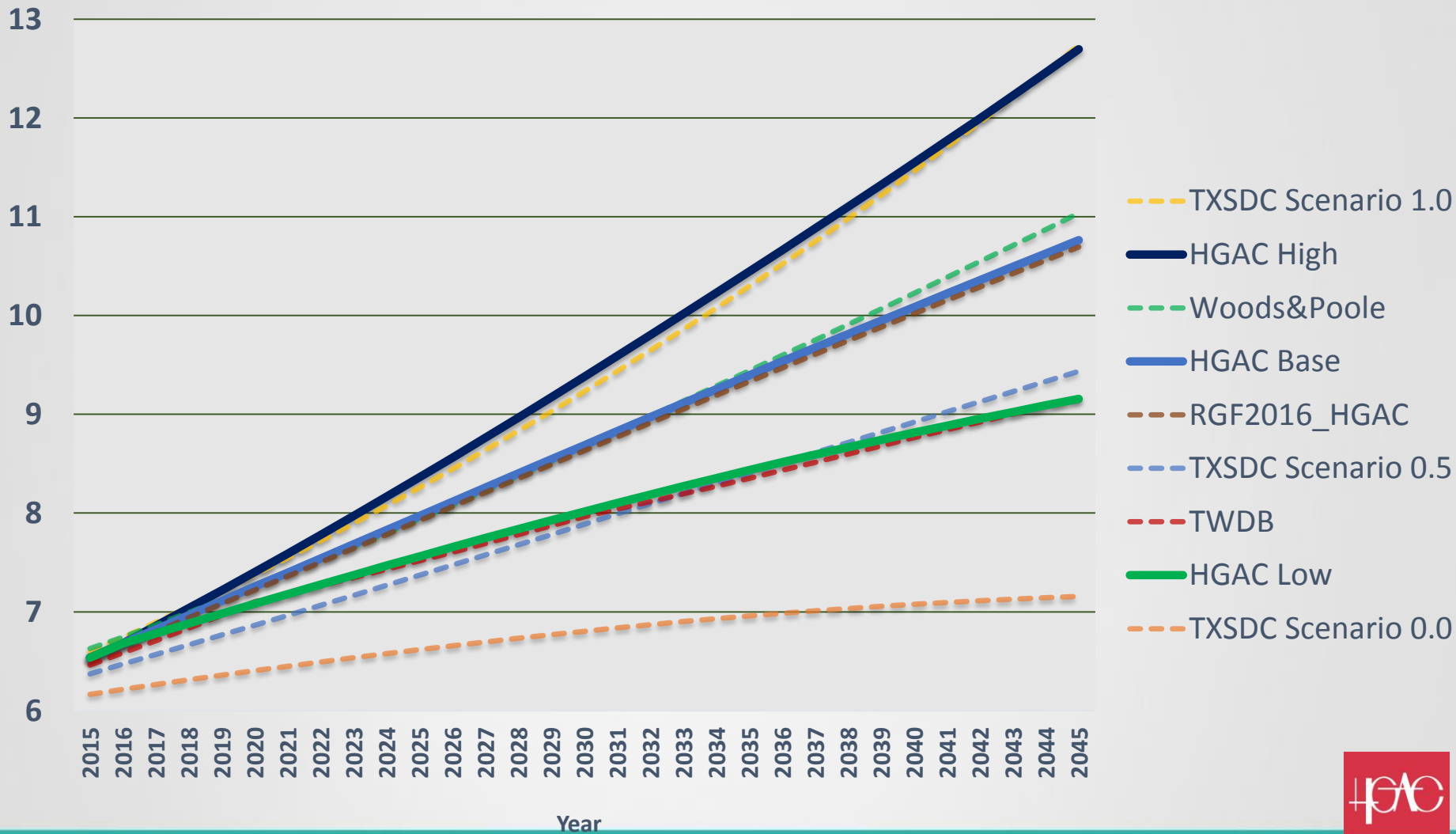
County	No. of Residential Units	%
Total	358,945	100.0%
Brazoria	29,954	8.3%
Fort Bend	57,896	16.1%
Galveston	11,460	3.2%
Harris	177,706	49.5%
Liberty	10,362	2.9%
Montgomery	68,494	19.1%
Waller	3,071	0.9%

● Master Planned Communities

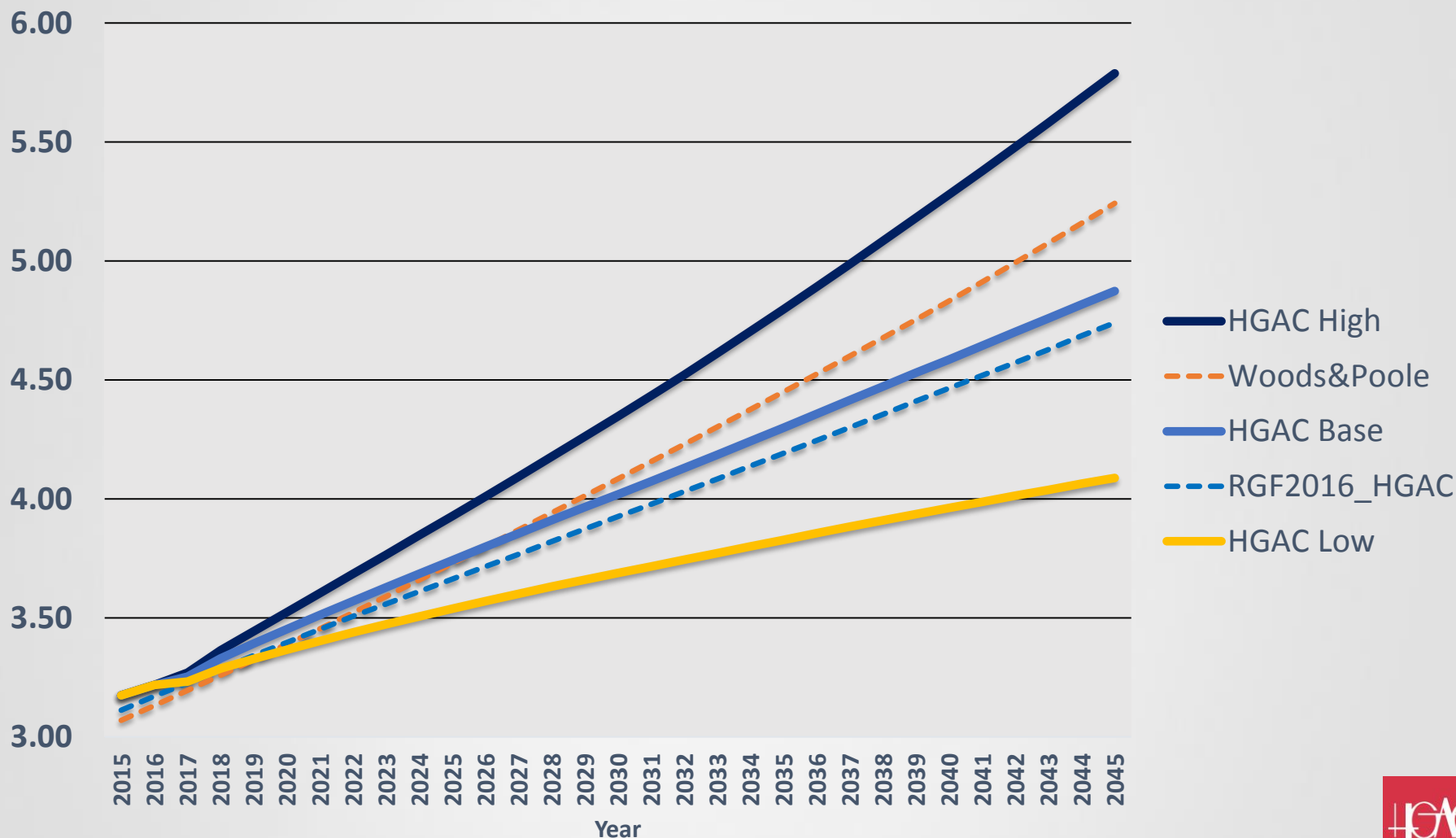
Residential Units



H-GAC 8-County Population Forecast (in millions)



H-GAC 8-County Employment Forecast (in millions)

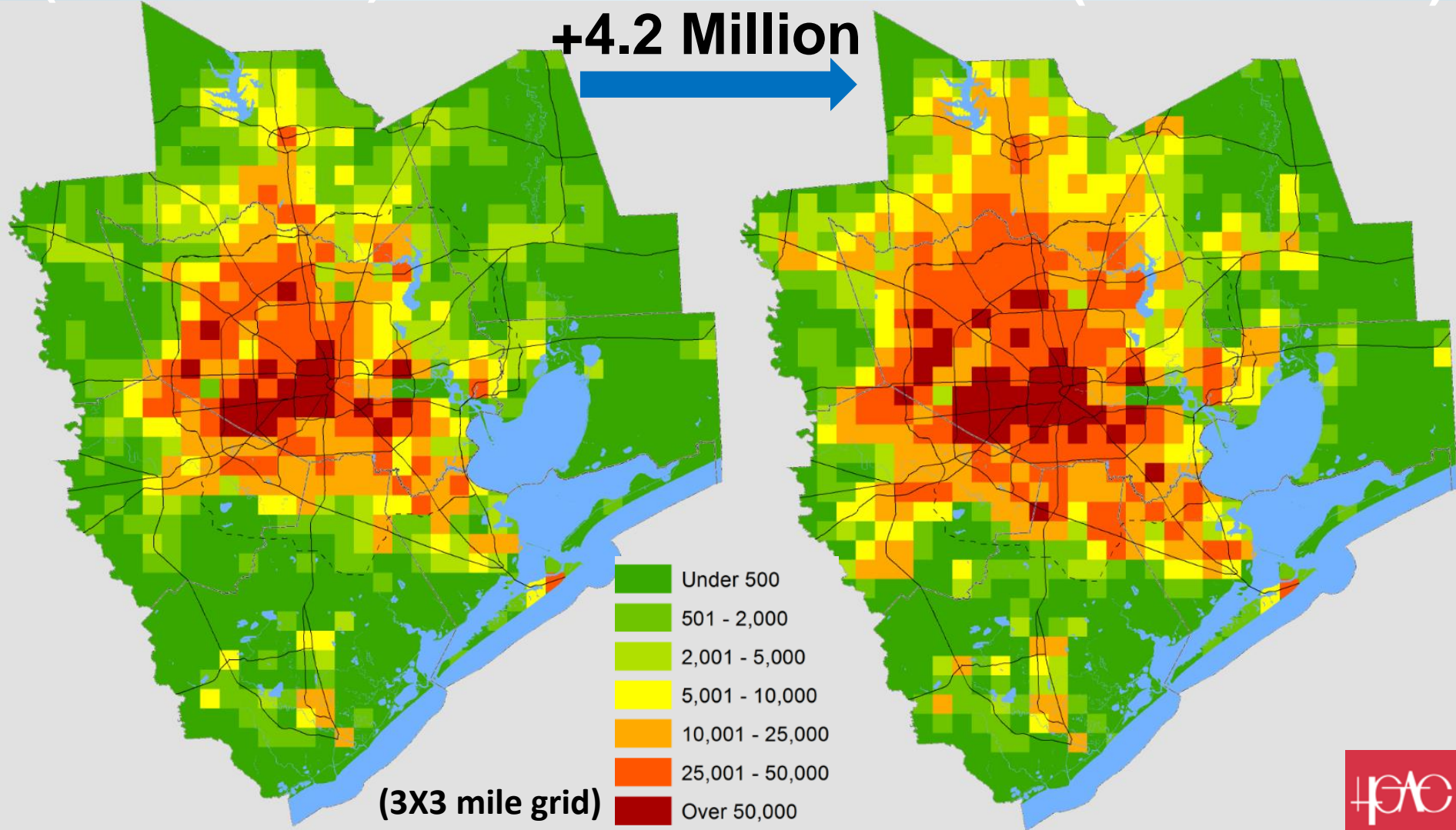
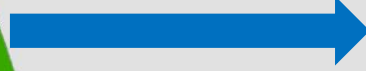


Household Population

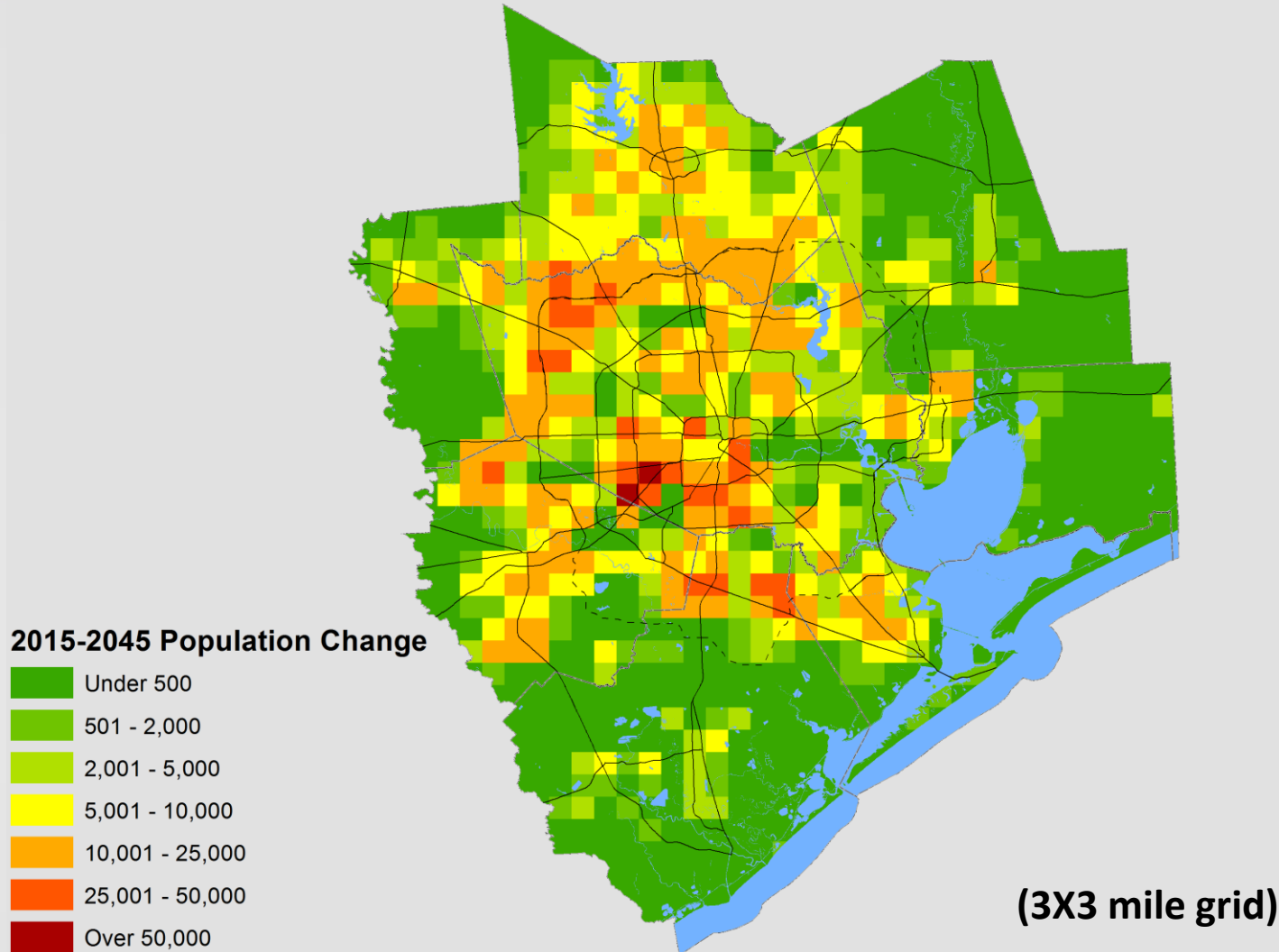
2015
(6.54 Million)

2045
(10.76 Million)

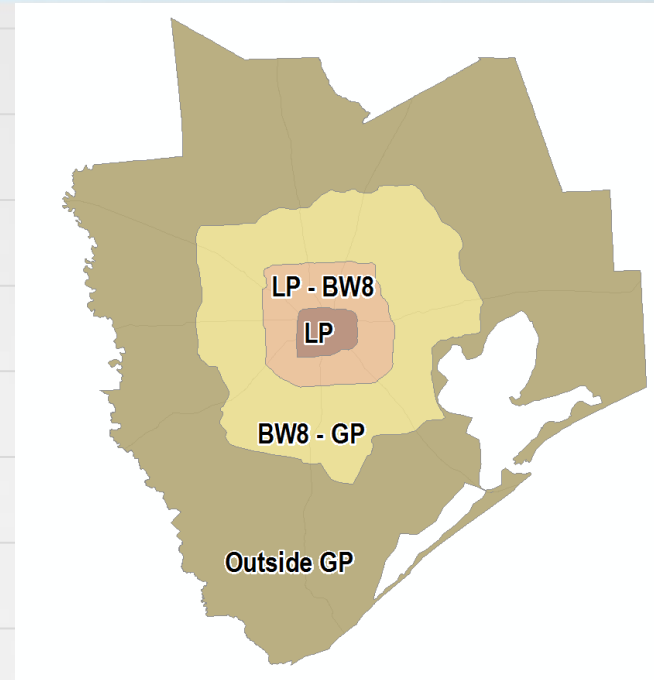
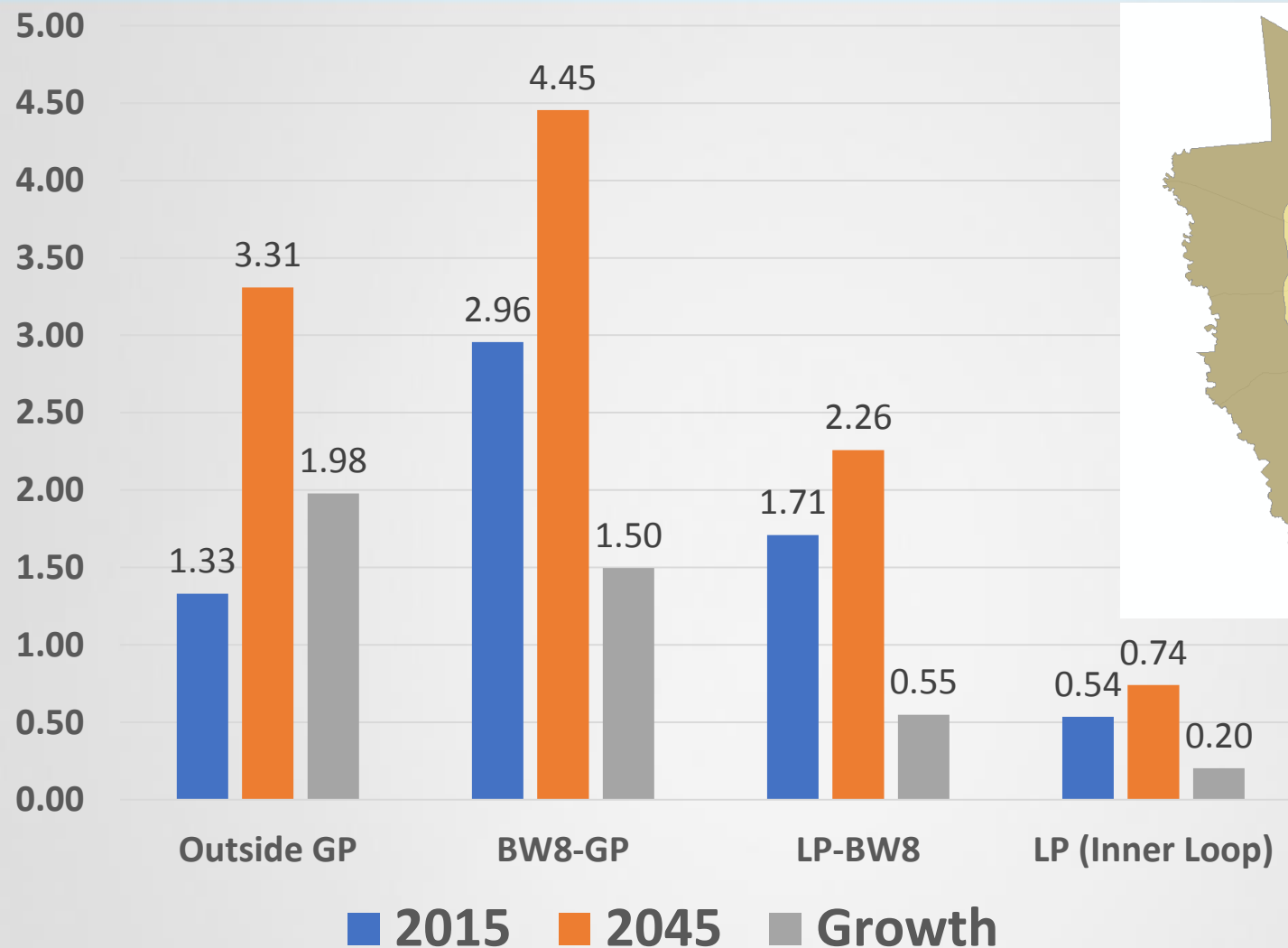
+4.2 Million



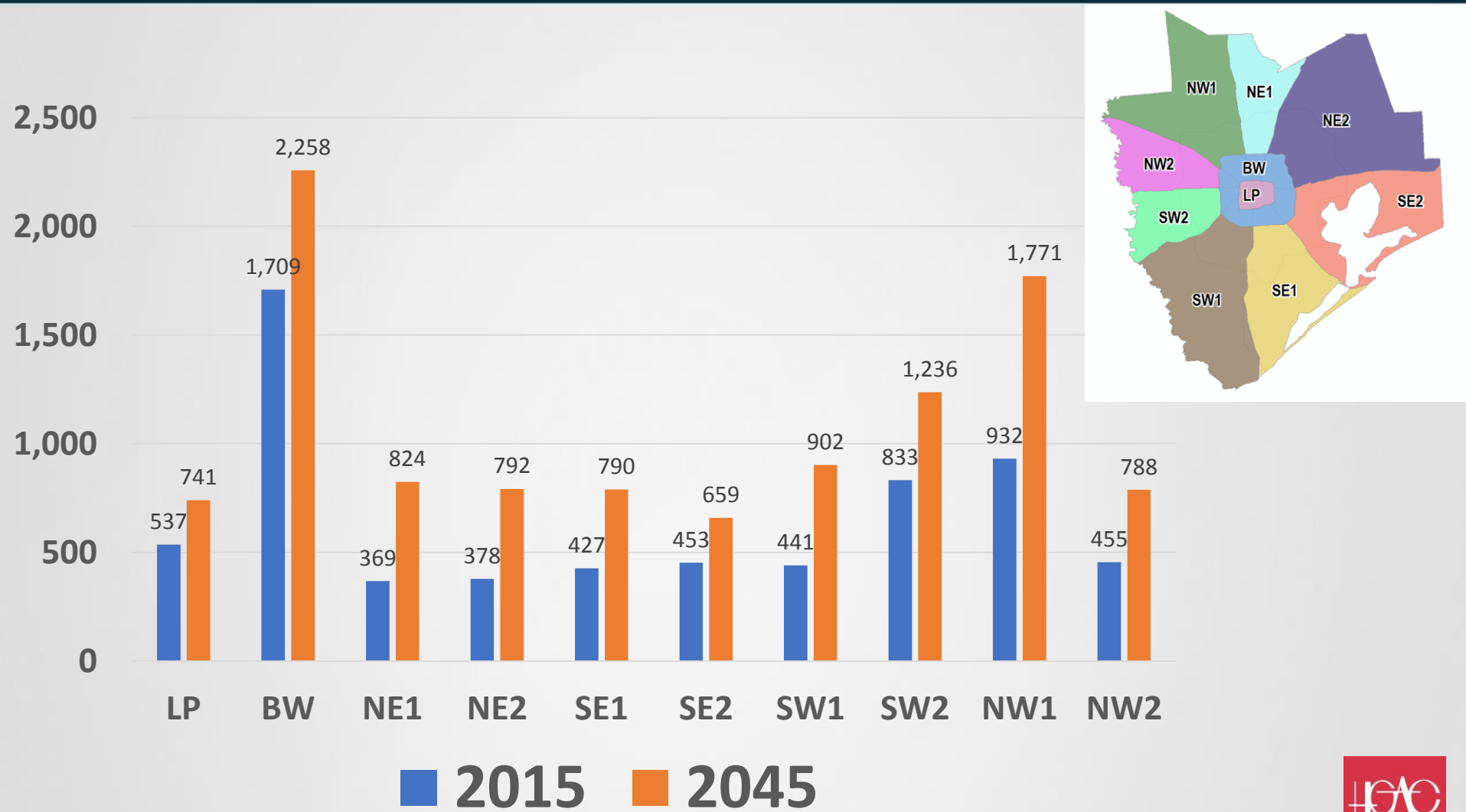
Household Population Growth 2015 to 2045



Regional Household Population (in millions) 2015-2045



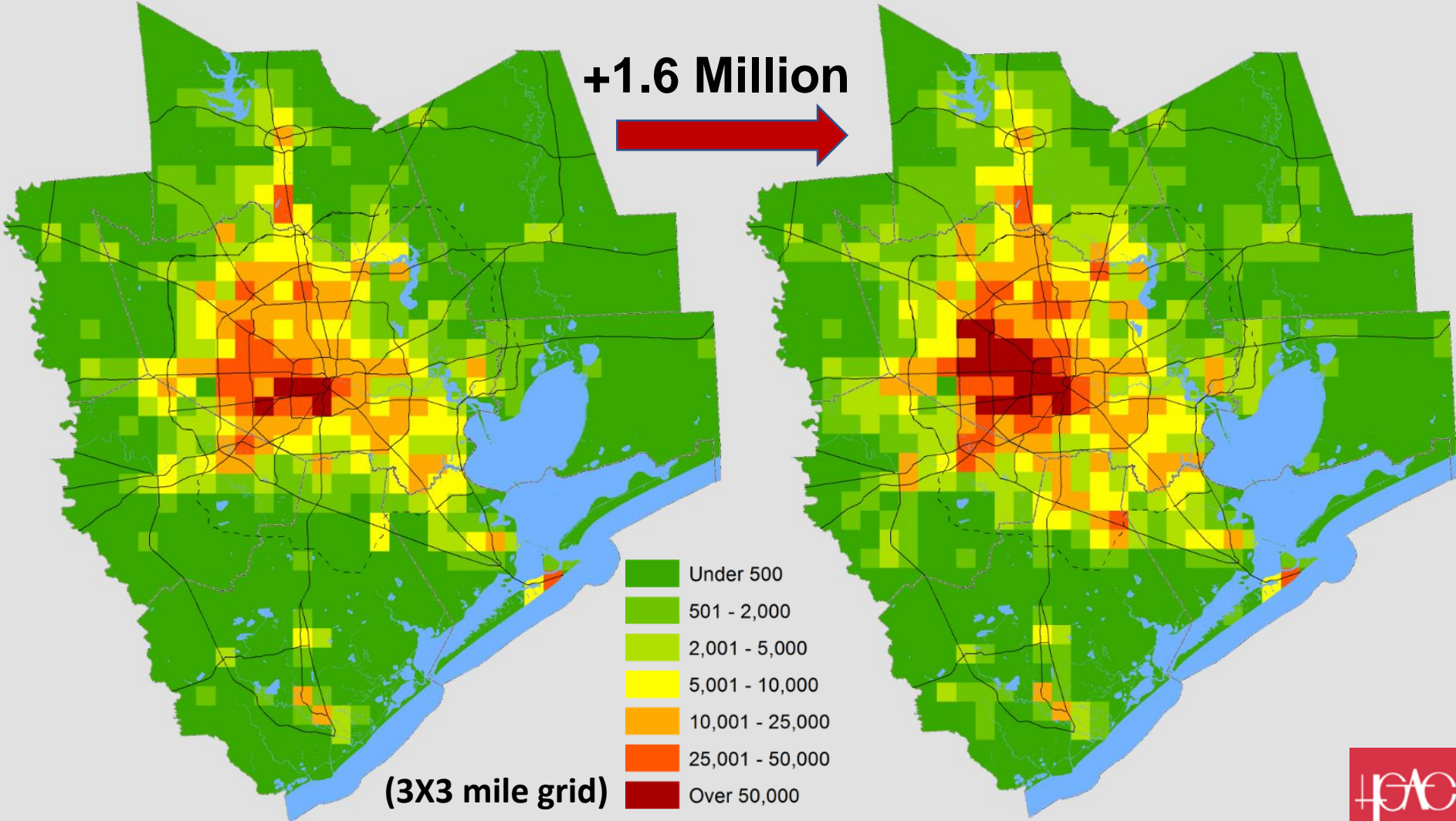
Regional Household Population (in 000's) 2015-2045



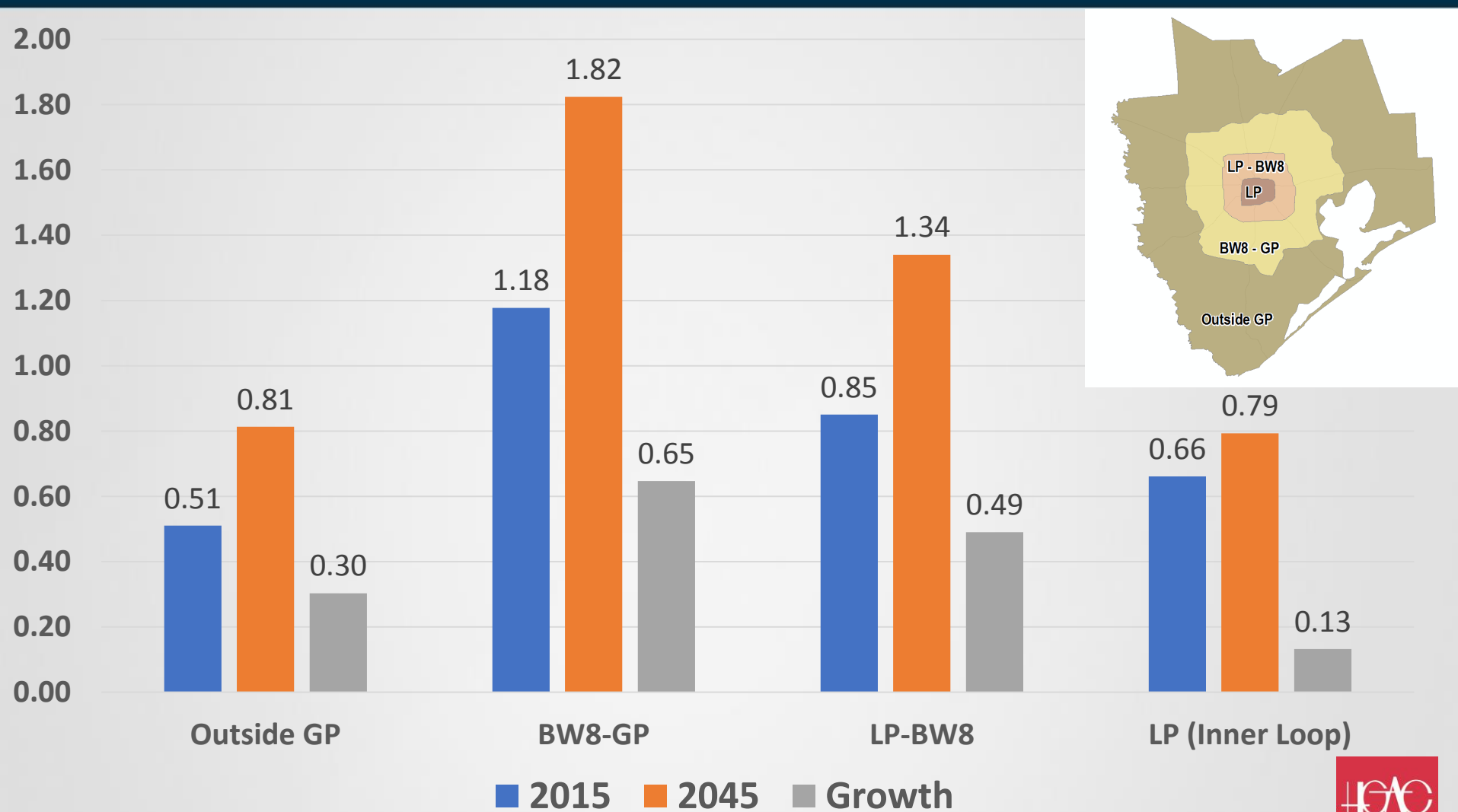
2015
(3.2 Million)

Employment

2045
(4.8 Million)



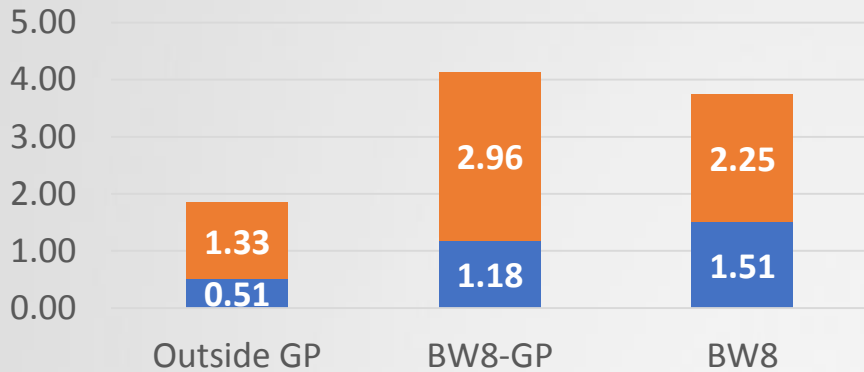
Regional Employment (in millions) 2015-2045



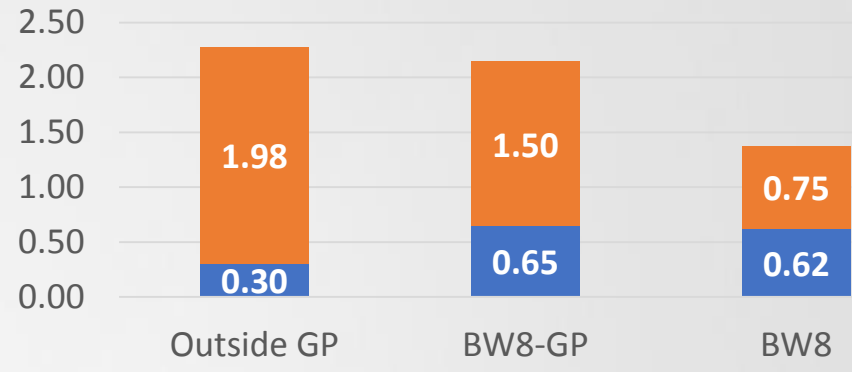
Household Population and Jobs (in millions)

2015-2045

2015

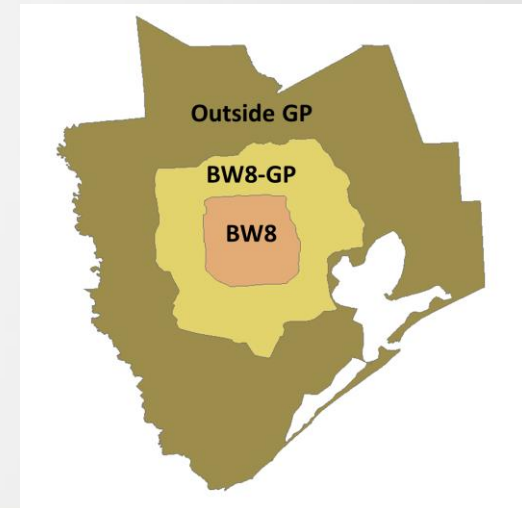
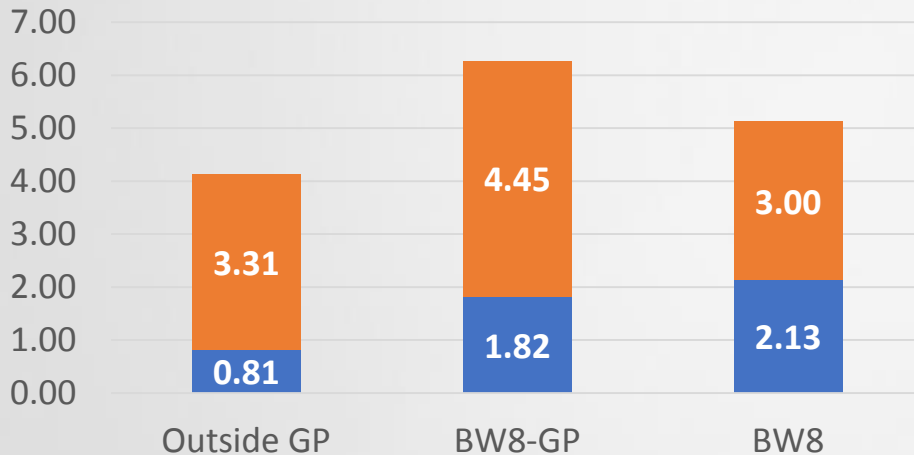


Growth (2015 to 2045)



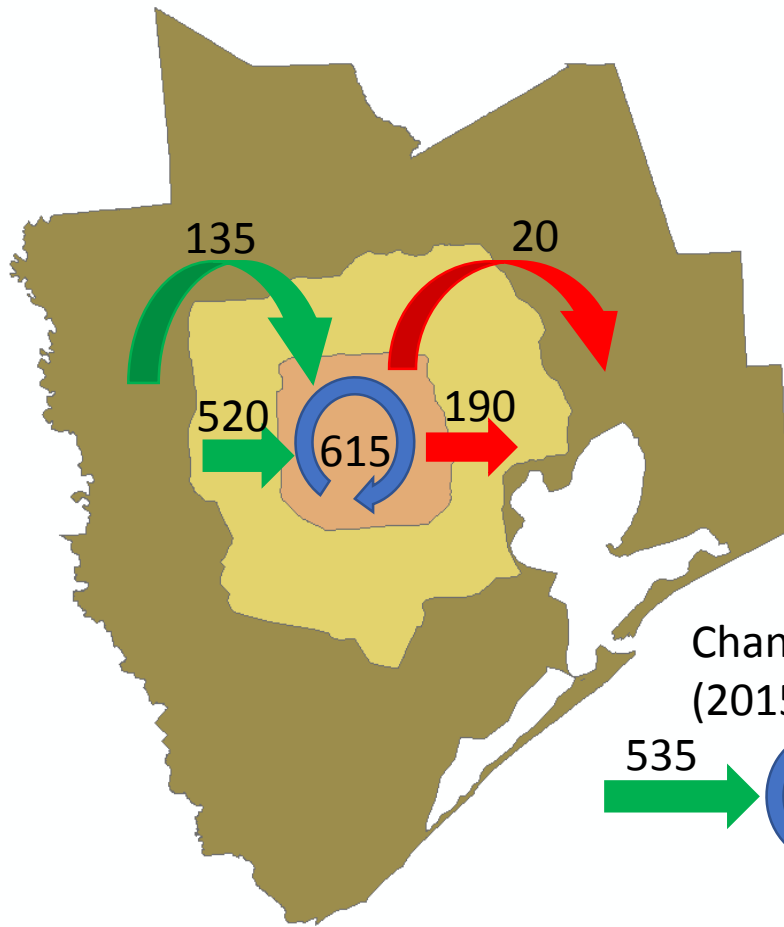
■ Jobs ■ Household Population

2045

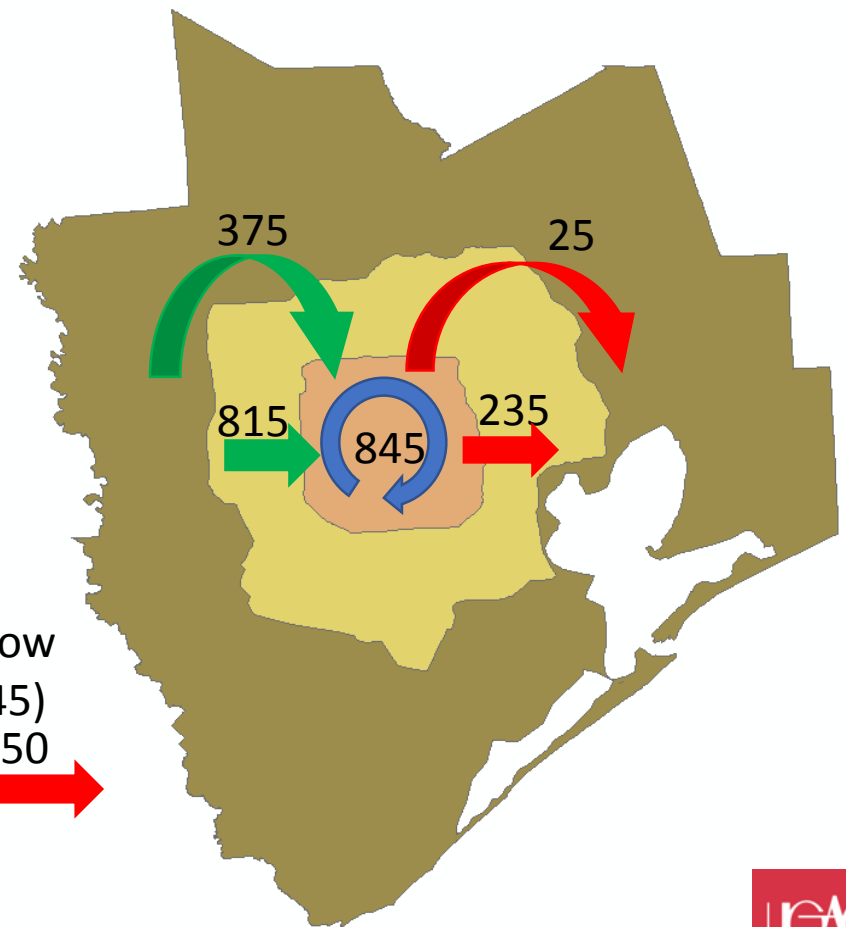


Commute Flows (in 000s) To and From Area Inside BW8

2015



2045



Change in Flow
(2015 to 2045)



Website and Contact Information

- Regional growth forecast
www.h-gac.com/forecast
- Regional Land Use Information System (RLUIS)
<http://arccgis02.h-gac.com/RLUIS/>
- Interactive web mapping applications
www.h-gac.com/go/apps
- E-mail: forecast@h-gac.com