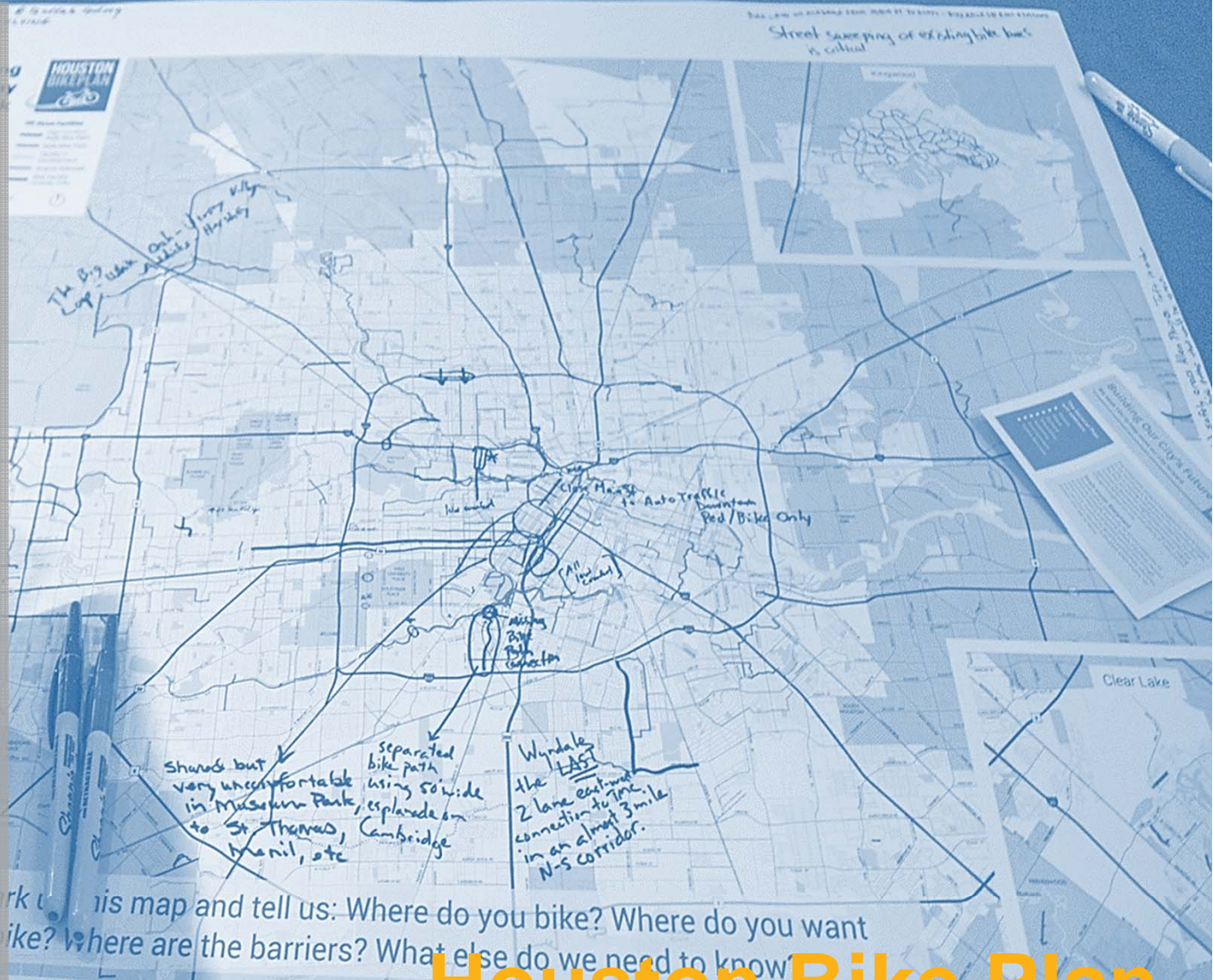


# HOUSTON BIKEPLAN



## Houston Bike Plan

### City Council Committee:

### Transportation, Technology, and Infrastructure

August 2015

i BELLAIR/DAIRY ASHGD NEED LANES!  
Hwy 6/KIRKWOOD/ESPARGAST HAVE UNSAFE  
MAY 4 AIR PORT NEED BIKE LANES  
Unav 290 on 34th... complete to Beltway 8.  
Safe crossing @ 7th/46th and 11th/White Oak

NARROW LANES - NEED IMPROVEMENT  
x clearly marked bike transition

Bellaire, Strawberry and Westpark are the only crossings of the RR tracks  
Real bike lane on Heights/Waugh all the way  
Safe crossing to...  
south center...  
Almond...  
bike lane



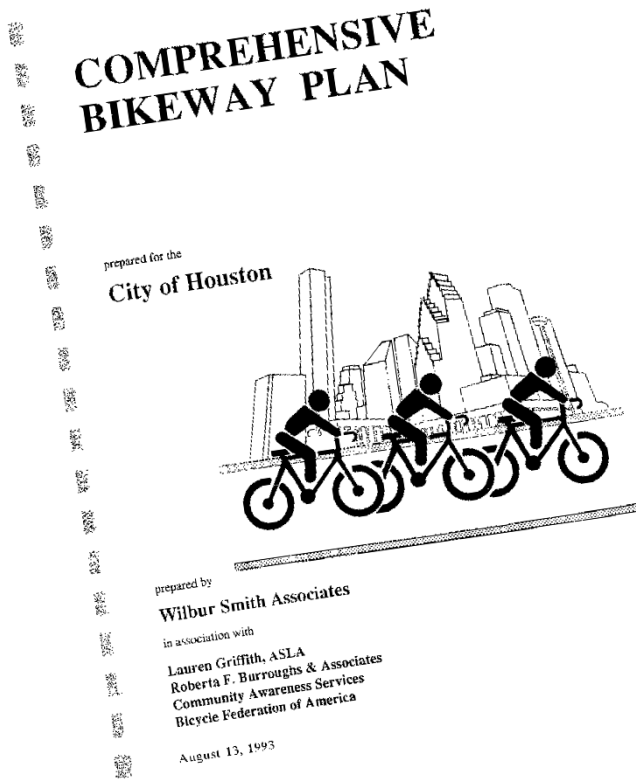
# Overview & Objectives

- Why update the plan?
- Scope and schedule
- Case for action
- Community feedback
- Draft vision and goals
- Next steps



Bill Coats Bridge (Brays Bayou)

# Why Are We Updating The City's Bike Plan?



- Over 20 years since plan update
- Complete Streets Executive Order
- Rebuild Houston
- Bayou Greenways
- Significant benefits

# Development of the Plan is a Partnership

## Lead Agency



## Multiple Departments

- Planning & Development
- Public Works & Engineering
- Parks and Recreation

## Funding Partners



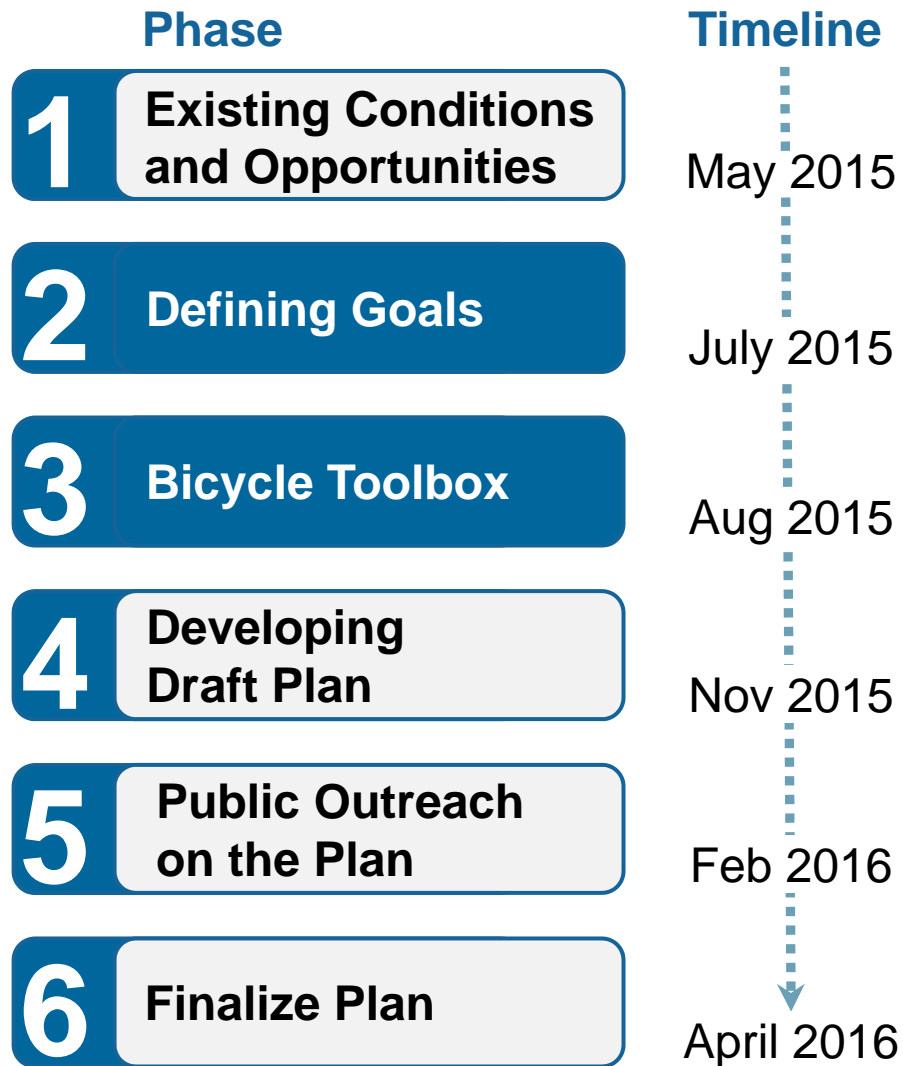
**Supported by: Bicycle Advisory Committee**

# Bicycle Advisory Committee

- 25 community leaders
  - Diverse cross section of Houston
    - Responsible for implementation
    - Bicycle riding community
    - Geographic areas
- Serve as sounding board
- Guide development of the plan
- Review/feedback on details
- Promote participation



# What is the Bike Plan Scope & Schedule?



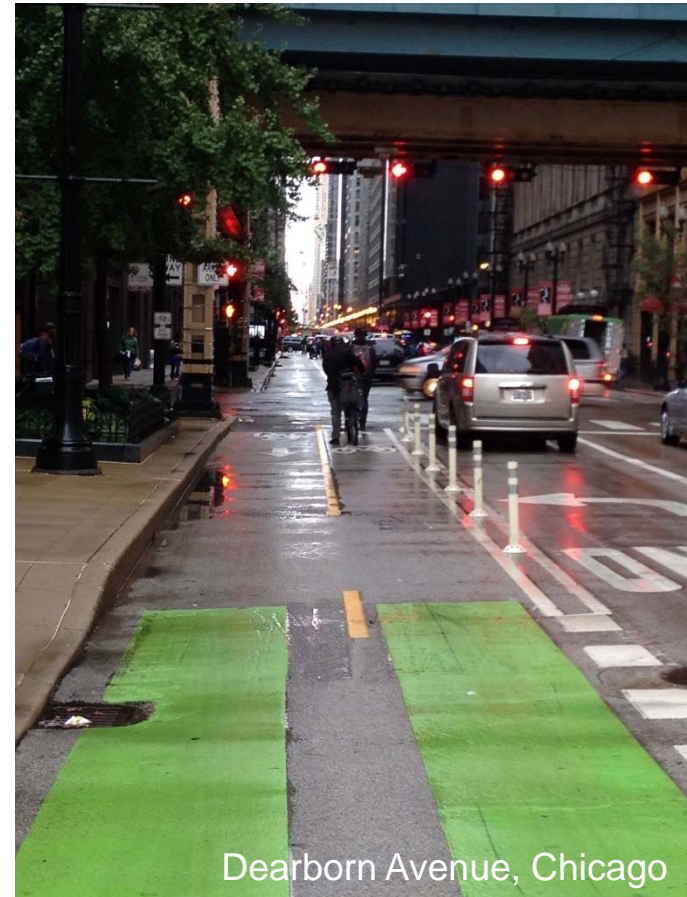
Major Public Engagement Periods



# A Case for Action

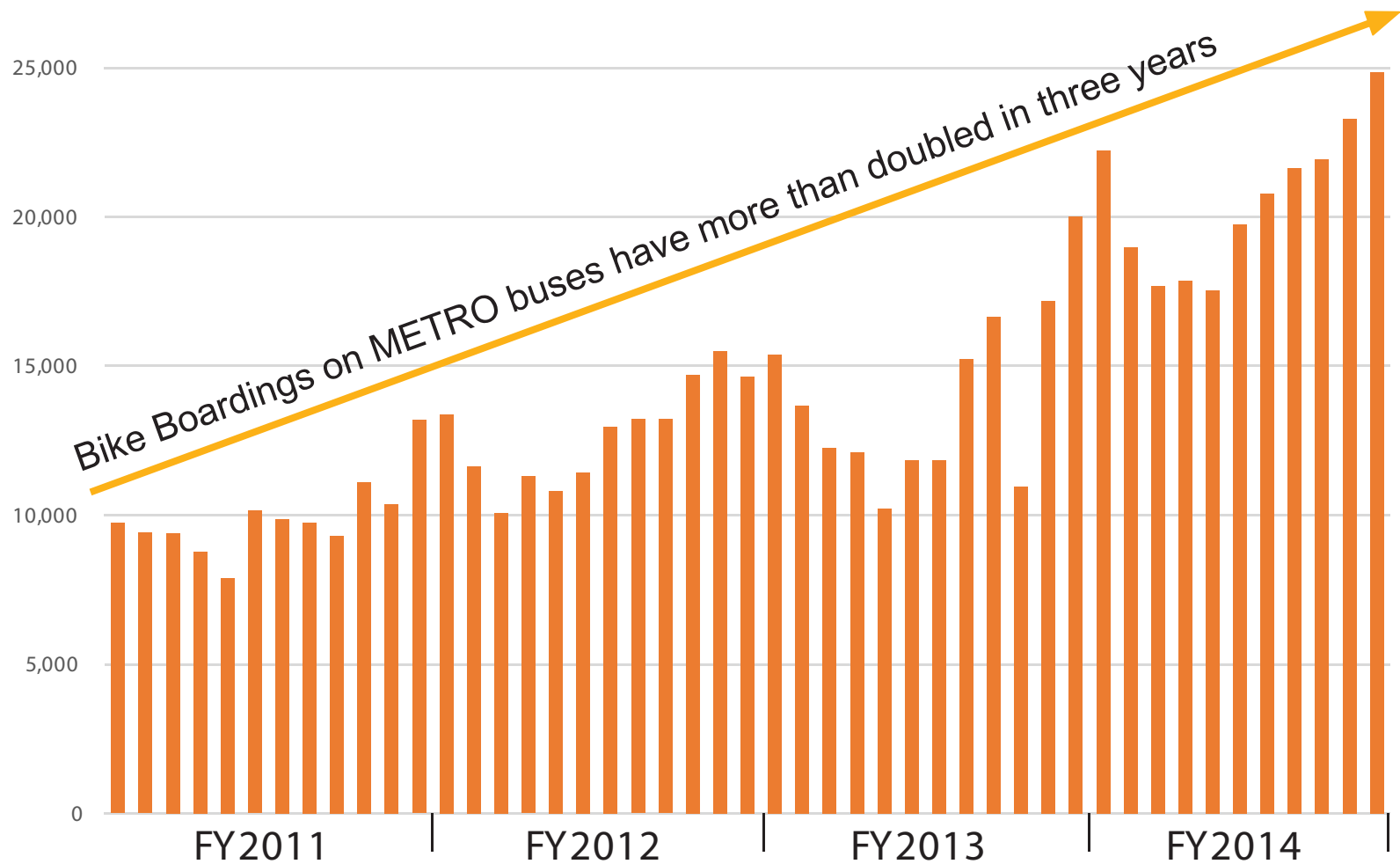
The Houston Bike Plan is a **transformative opportunity** to...

1. Provide a safer, more comfortable environment for the growing number of people riding bicycles in Houston
2. Provide affordable access to opportunities
3. Improve community health and wellness
4. Compete with peer cities who are setting the bar
5. Benefit everyone, not just people who bike



# Better Serve Growing Ridership

Significant increase in cycling activity and interest

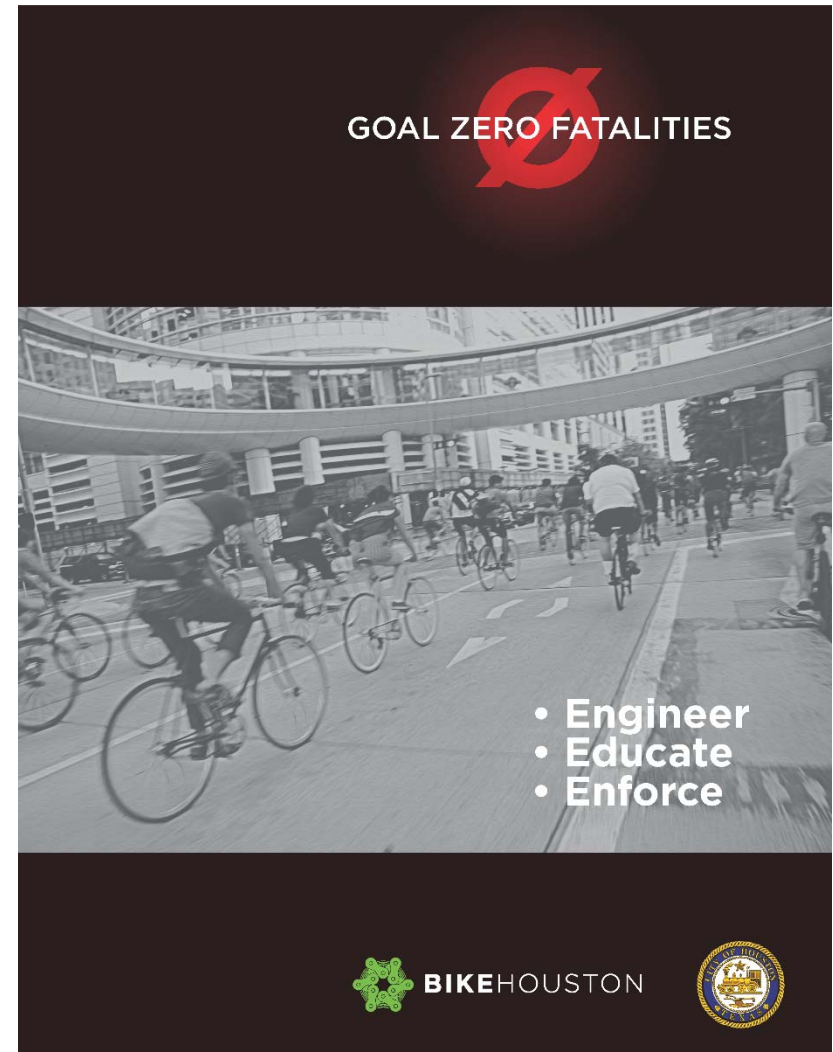


Source: Houston METRO Bicycle Boarding Data

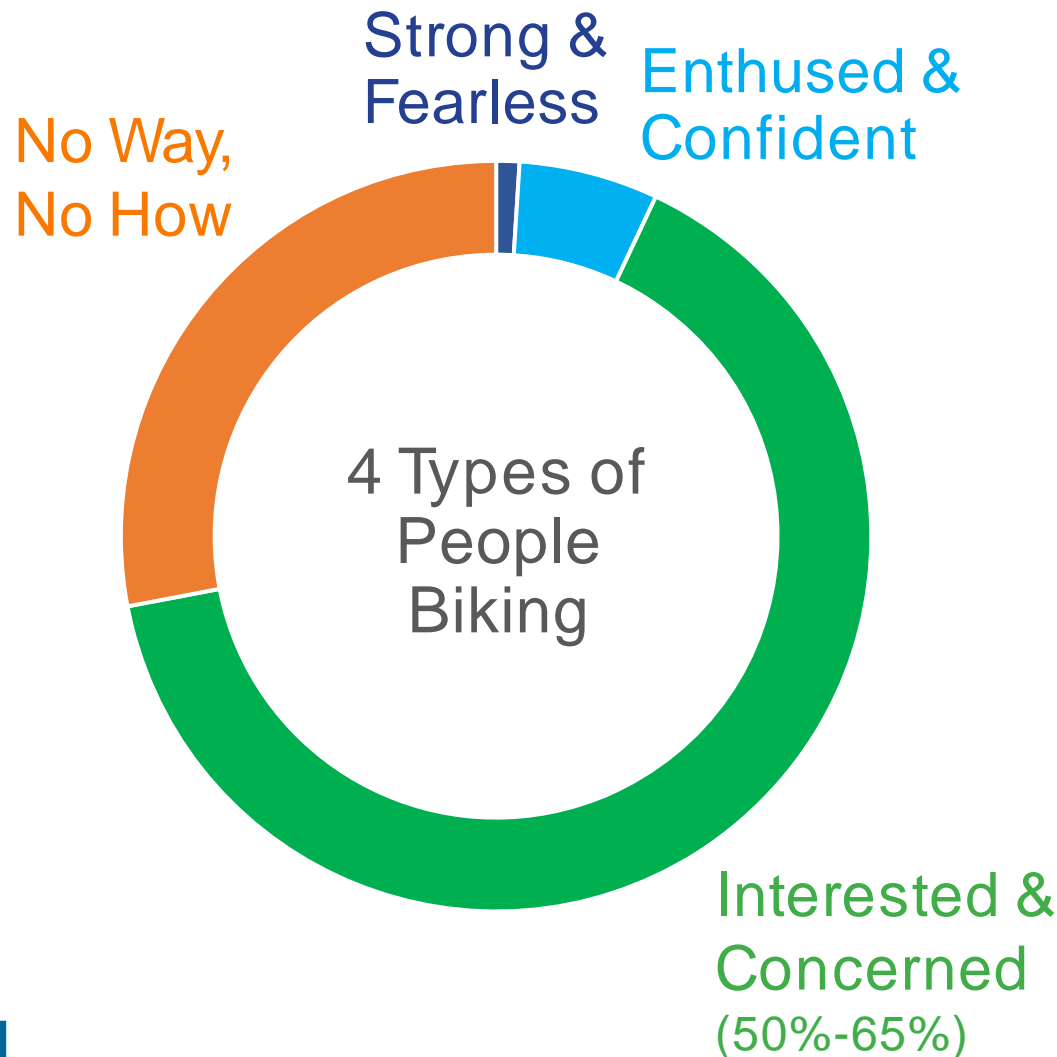


# Safety is Critical - Goal Zero

- In 2014, the City of Houston and BikeHouston partnered to launch the Goal Zero Campaign
- Campaign focuses on safety education for drivers and bicyclists
- Partnership has supported the development of the City's Bicycle Master Plan



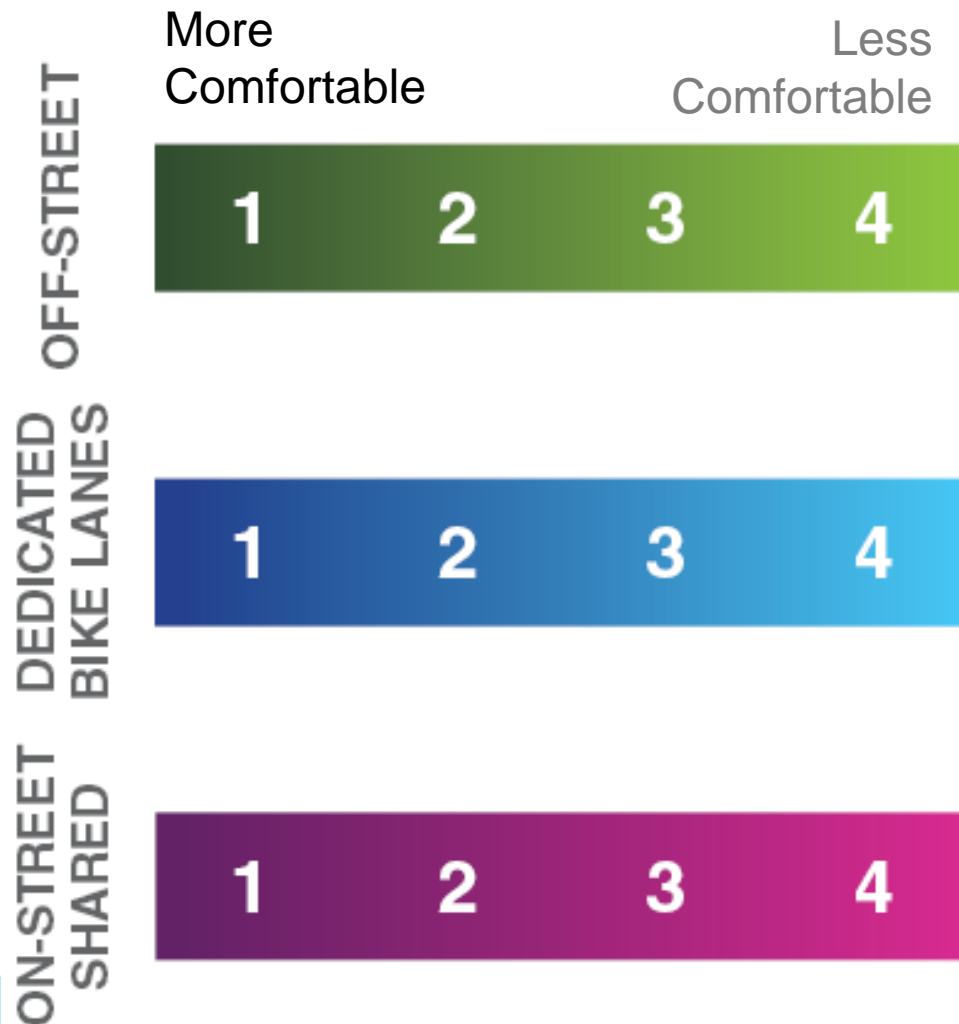
# Who is Our Design Rider?



- People in the **Interested & Concerned** category typically most attracted to bicycle facilities with higher comfort levels
- Current network introduces enough gaps and high stress locations to limit frequent bicycle use to **Strong & Fearless** riders

# Defining Bicycle Level of Comfort

Existing Bicycle Facilities Assessed on Four Levels of Comfort



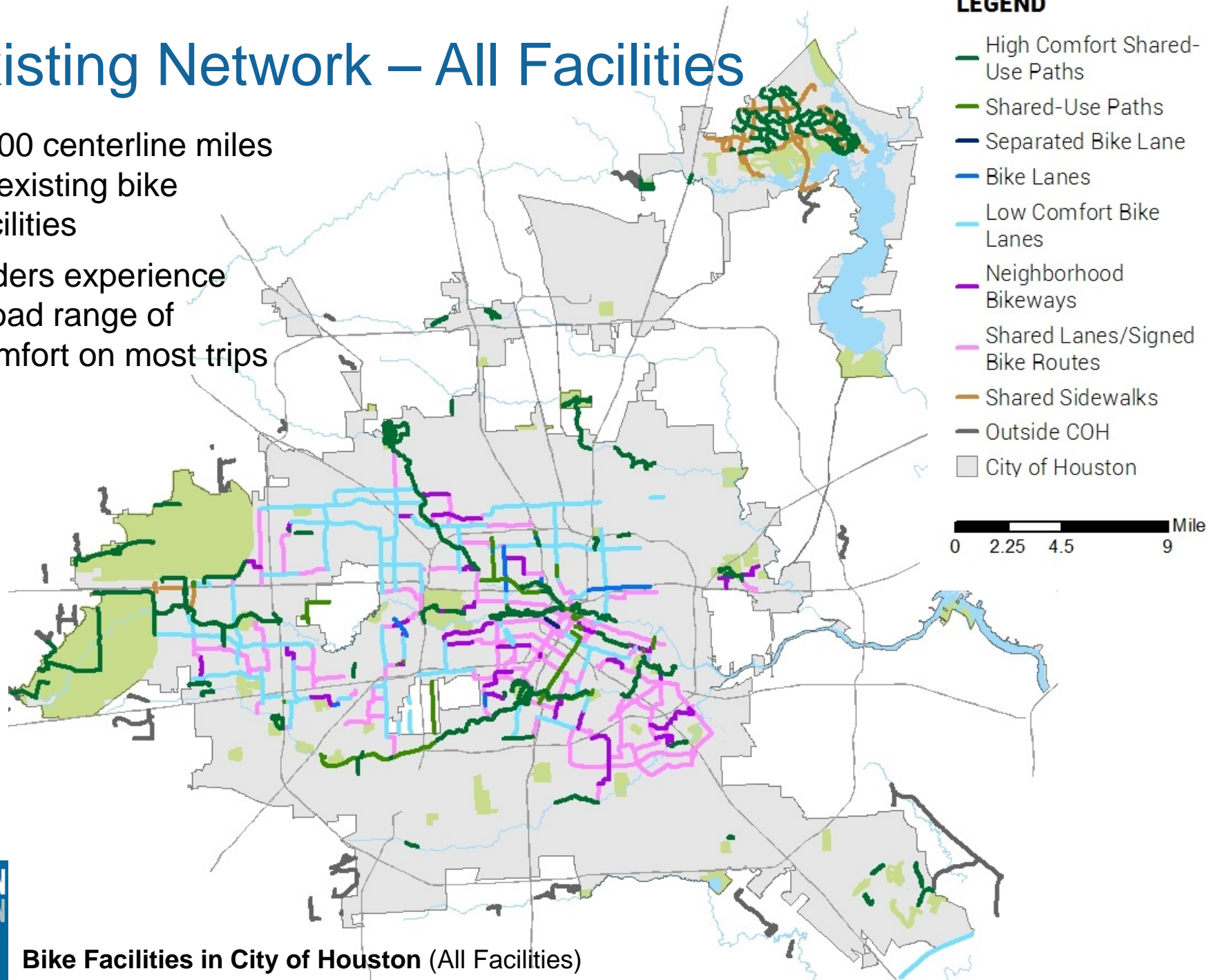
Level of Comfort assessment based on:

- Bicycle facility width
- Adjacent traffic volumes & speeds
- Separation from vehicle traffic
- Intersections & crossings



# Existing Network – All Facilities

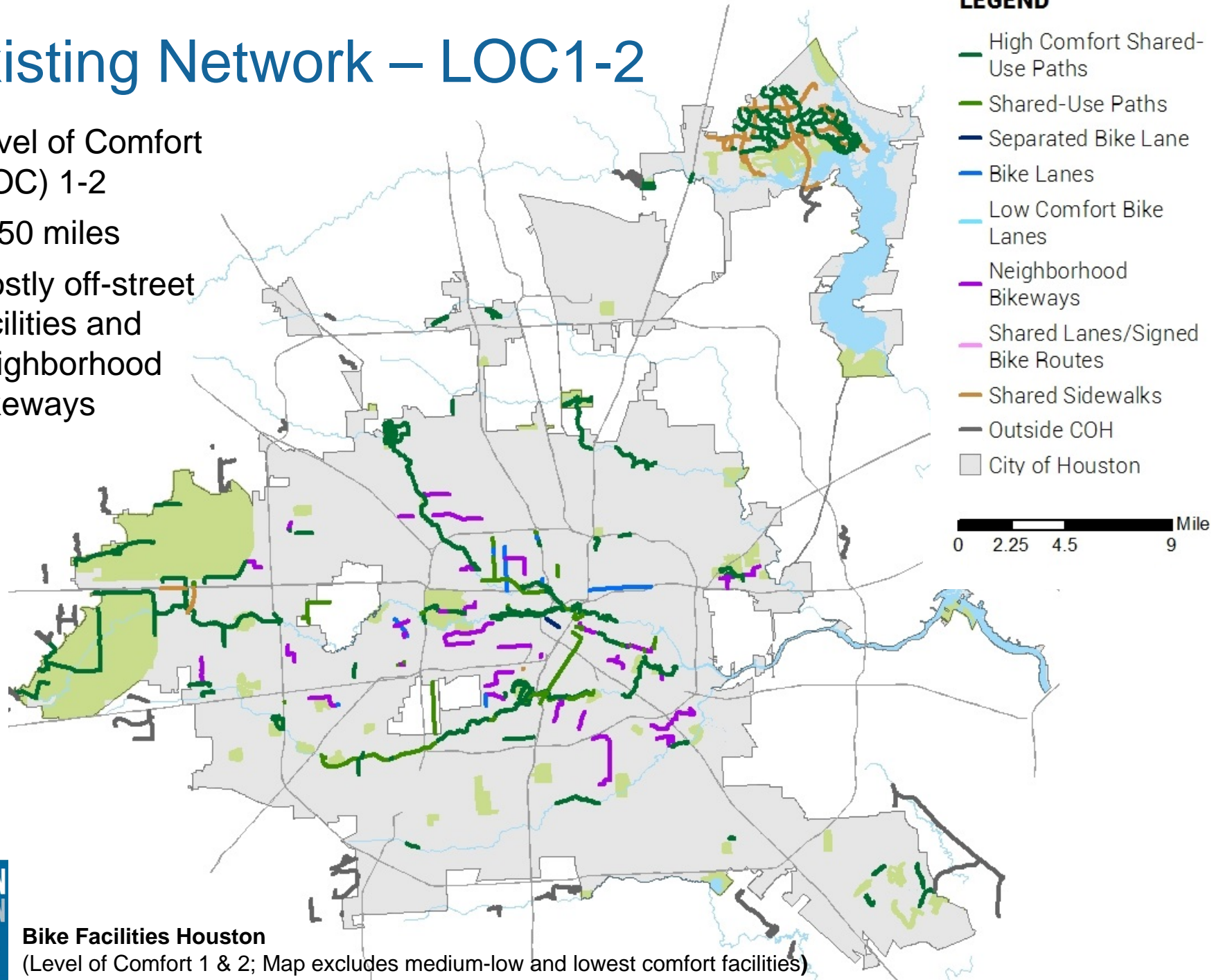
- ~500 centerline miles of existing bike facilities
- Riders experience broad range of comfort on most trips



**Bike Facilities in City of Houston (All Facilities)**

# Existing Network – LOC1-2

- Level of Comfort (LOC) 1-2
- ~250 miles
- Mostly off-street facilities and neighborhood bikeways



# Competitive with Peers Cities

% of Bicycle Commuter Mode Share		Total Existing Miles of Bicycle Facilities / Sq Mile		Miles of Planned Bicycle Facilities		% Adults Meeting Recommended Minimum Weekly Aerobic Physical Activity*		Bicyclist Fatalities per 10k bicycling commuters	
6.1	Portland, OR	7.8	San Francisco, CA	1741	San Antonio, TX	62.4	San Francisco, CA	0.9	San Francisco, CA
3.6	Minneapolis, MN	4.6	Austin, TX	1680	Los Angeles, CA	61.5	Denver, CO	1.1	Portland, OR
3.4	Seattle, WA	3.9	Seattle, WA	1296	Dallas, TX	60.6	Miami, FL	1.1	Washington, D.C.
3.3	San Francisco, CA	3.9	Minneapolis, MN	1100	Austin, TX	60.3	Portland, OR	1.5	Denver, CO
2.9	Washington, D.C.	3.8	Washington, D.C.	1000	Fort Worth, TX	56.0	Los Angeles, CA	1.6	Atlanta, GA
2.2	Denver, CO	3.1	Denver, CO	962	Portland, OR	55.9	Austin, TX	1.7	Seattle, WA
1.8	Average	3.0	Portland, OR	640	Chicago, IL	55.5	Minneapolis, MN	2.3	Minneapolis, MN
1.3	Austin, TX	2.7	Average	632	Average	55.3	Average	2.4	Austin, TX
1.3	Chicago, IL	2.6	Chicago, IL	523	Seattle, WA	54.9	Washington, D.C.	3.9	Chicago, IL
1.1	Atlanta, GA	2.5	Dallas, TX	311	Denver, CO	54.5	Seattle, WA	4.3	Los Angeles, CA
1.0	Los Angeles, CA	2.5	Dallas, TX	277	Miami, FL	52.9	Phoenix, AZ	5.4	San Antonio, TX
0.7	Miami, FL	1.5	Phoenix, AZ	275	Minneapolis, MN	52.3	Chicago, IL	7.8	Average
0.7	Phoenix, AZ	1.3	Los Angeles, CA	275	Minneapolis, MN	52.1	Atlanta, GA	7.9	Miami, FL
0.5	Houston, TX	1.3	Miami, FL	125	Washington, D.C.	51.1	Houston, TX	11.2	Houston, TX
0.2	Dallas, TX	1.1	Houston, TX	98	Houston, TX	50.3	San Antonio, TX	17.6	Dallas, TX
0.2	San Antonio, TX	1.1	San Antonio, TX	60	Atlanta, GA	48.8	Dallas, TX	19.3	Phoenix, AZ
0.1	Fort Worth, TX	0.7	Atlanta, GA	19	San Francisco, CA			41.9	Fort Worth, TX
		0.5	Fort Worth, TX	5	Phoenix, AZ				

B  
E  
T  
T  
E  
R

A  
V  
E  
R  
A  
G  
E

B  
E  
L  
O  
W

\*Data was unavailable for Fort Worth, TX



Source: Alliance for Biking & Walking's 2014 Benchmarking Report for Bicycling and Walking in the United States



# Existing Plans

- 1993 COH Comprehensive Bicycle Plan
- 2010 Ensemble HCC Livable Centers
- 2010 Fourth Ward Livable Center
- 2010 Northside Livable Center
- 2010 Upper Kirby Livable Center
- 2011 Clear Lake Bike Ped Study
- 2011 Fifth Ward Bike Ped Study
- 2011 Downtown/EaDo Livable Center
- 2011 Energy Corridor Livable Center
- 2011 West Houston Trails Master Plan
- 2012 Airline Livable Center (Harris County)
- 2012 East End Mobility Study
- 2012 Independence Heights Northline Livable Center
- 2012 Washington Avenue Livable Center
- 2013 Inner West Loop Mobility Study
- 2014 METRO Bike & Ride Access and Implementation Plan
- 2014 TMC Mobility Study
- 2015 Heights-Northside Mobility Study
- 2015 Northwest Mobility Study
- 2015 West Houston Mobility Stud
- 2015 Energy Corridor Master Plan
- 2015 Strollin' & Rollin' Southeast Houston
- 2015 Houston Park Master Plan
- Health/Built Environment Plans: CTI & Healthy Living Matters
- Other Management District and Neighborhood Plans

# Community Feedback

- Building awareness
  - 24+ events
  - 3,888 email sign-ups
- 5 Public Meetings
  - 237 attendees
  - 258 goal cards
  - 35 comment cards
- 800+ map comments



# Community Feedback

- Leverage stakeholders
  - Newsletters/email blasts
  - Coordination at events
  - Social Media
  - Meeting in box
- Online Participation
  - 2,895 online surveys
  - 387 map ideas
  - 130 comments on vision & goals





# What Have We Heard?

- **Cultural Shift** - Increase safety education and enforcement of laws
- **Infrastructure/Design** - Improved facilities and end of trip amenities
- **Access/Connectivity** - Safe access and continuous connectivity
- **Maintenance** - Better maintenance of existing facilities
- **Health/Wellness** - Ability to live a healthy lifestyle and environmental benefits



# Draft Vision and Goals

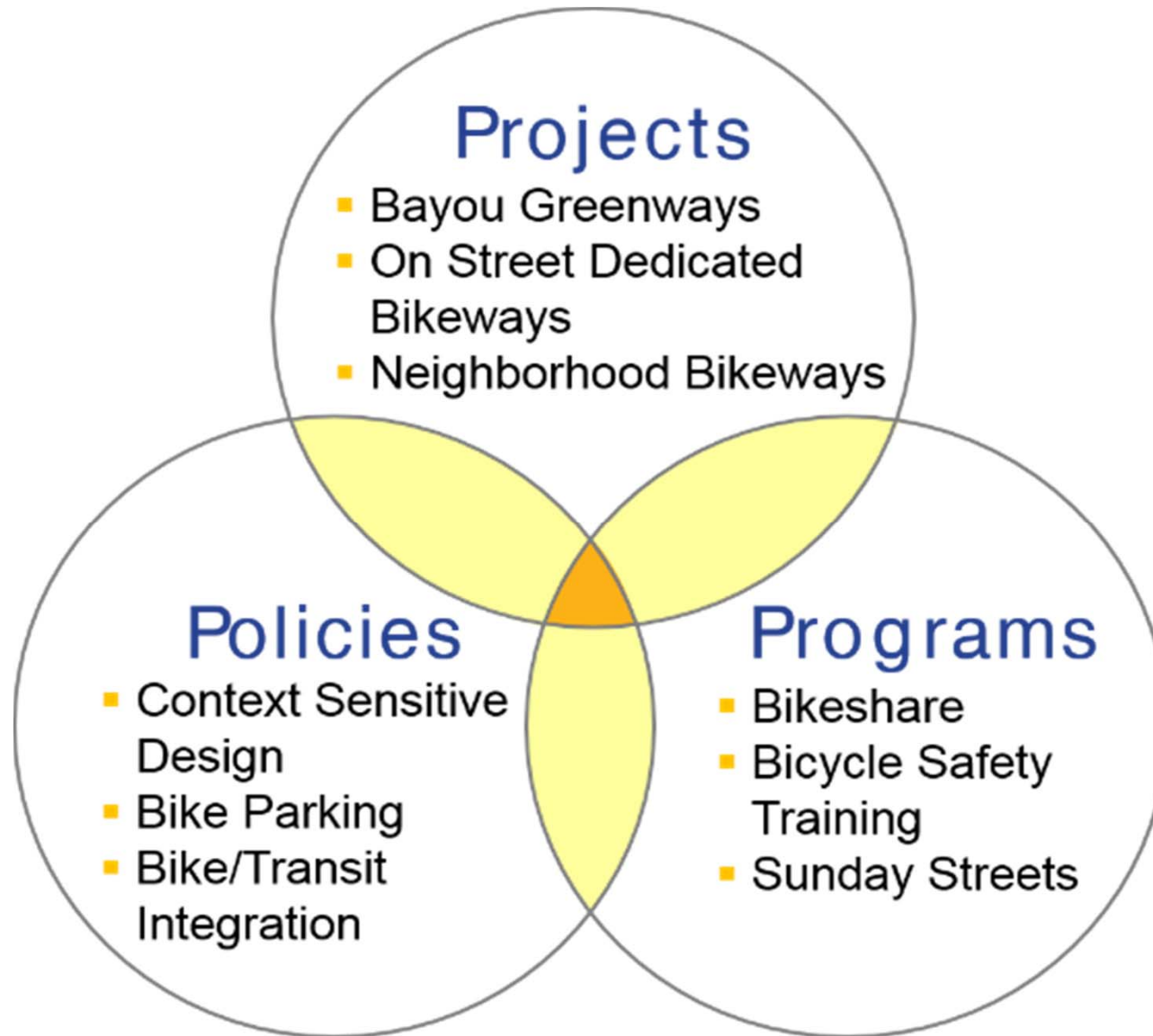
## Vision

**By 2026, the City of Houston will be a Safer, More Accessible, Gold Level Bike-Friendly City**

## Goals

1. To provide a **safer bicycle network** for people of all ages and abilities through improved facilities, education, and enforcement
2. To create a highly **accessible, citywide network** of comfortable bike facilities that connects neighborhoods to transit, jobs, and activity centers, including schools, universities, parks, and libraries
3. To **exceed average ridership** levels in peer cities by implementing policies and programs that enable more people to ride bicycles and encourage healthy, active transportation choices
4. To **develop and sustain** a high-quality bicycle network, including both bikeways and end-of-trip facilities

# Next Steps: Bicycle Toolbox Development

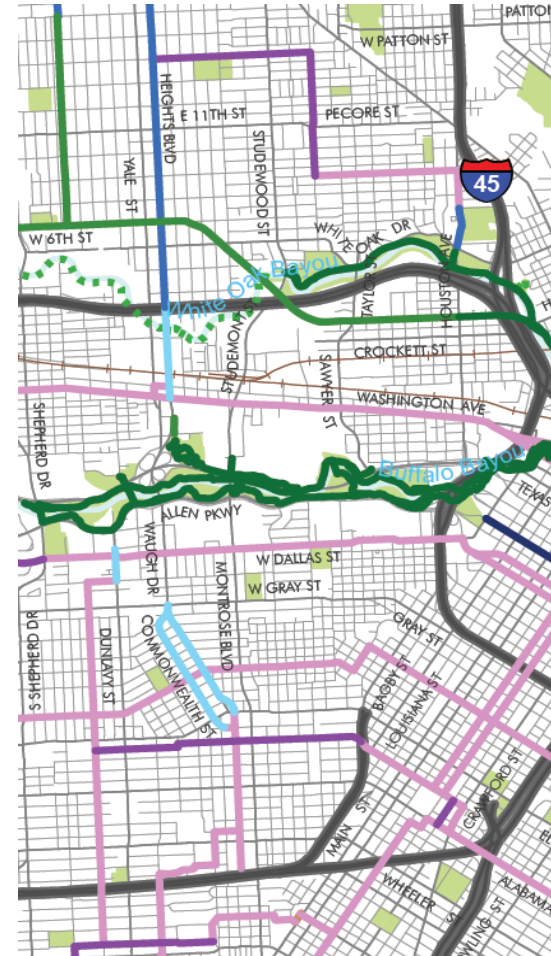
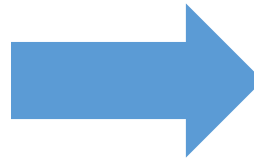


# Next Steps: Bike Plan Map and Recommendations



Existing Bike Map

Based on facility type

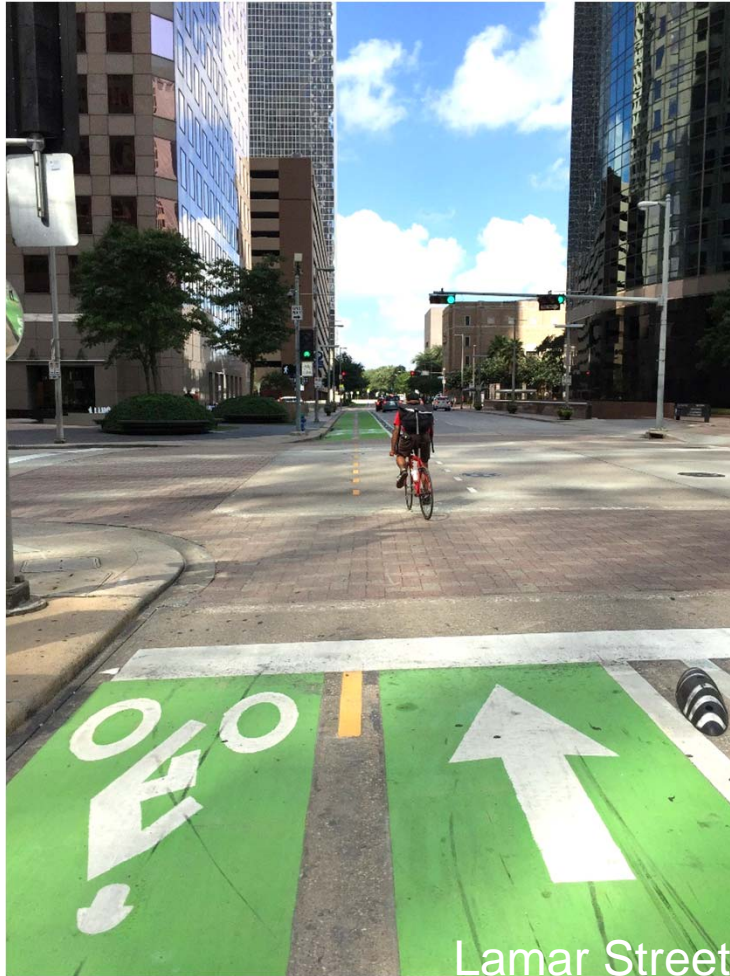


New Bike Map

Based on level of comfort



# Next Steps: Draft Plan



## From Plan to Action

1. Finalize Recommendations:
  - Policies
  - Programs
  - Projects
2. Prioritization of projects (short term/long term)
3. Implementation and funding strategies
4. Pilot projects which may include:
  - New on-street facilities
  - Neighborhood bikeways
  - Intersection treatments



[www.HoustonBikePlan.org](http://www.HoustonBikePlan.org)

[Bikeways@houstontx.gov](mailto:Bikeways@houstontx.gov)

832-395-2700



@HoustonBikePlan



Houston Bikeways Program

