

Municipal Setting Designations



Jedediah Greenfield
Program Manager

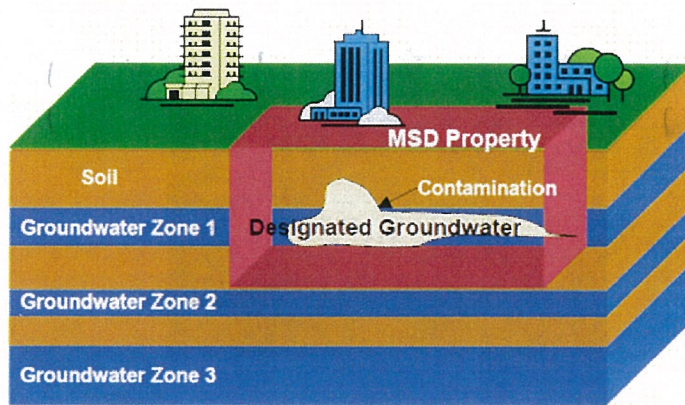
Municipal Setting Designations (MSDs)

What is an MSD?



- A **voluntary** deed restriction that prohibits the use of impaired groundwater as potable water
 - A tool property owners can use to address environmental impairments to groundwater
 - Allows reinvestment and redevelopment of impaired properties
- A public health protection

MSD Depiction



Impacted groundwater is typically between 20 and 60 feet below the surface.

Drinking Water Supply Wells typically get water from 600 feet or deeper below the surface.

- *Houston has shallow contaminated groundwater scattered across the City*

Municipal Setting Designations (MSDs)

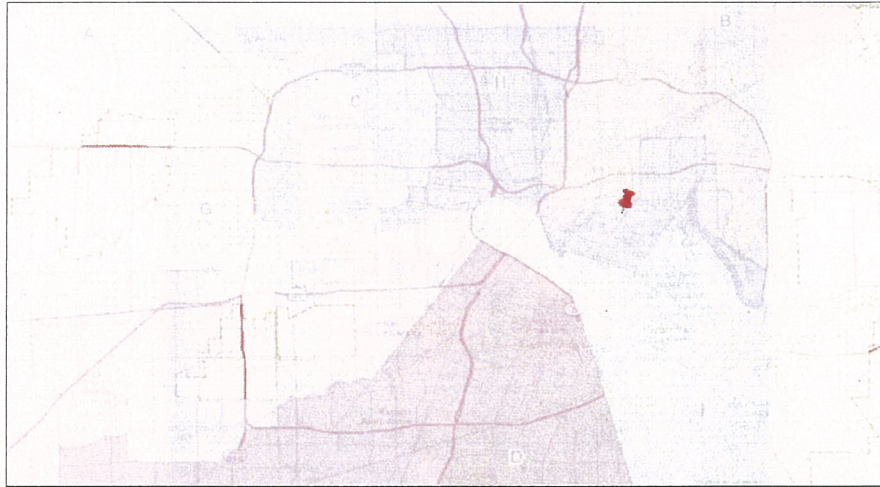
What is an MSD?



- It is a State Program
 - Administered by the Texas Commission on Environmental Quality (TCEQ)
 - Requires Local Support
- Article 13 of Chapter 47
 - Public Hearing Required



5311 Clinton Drive

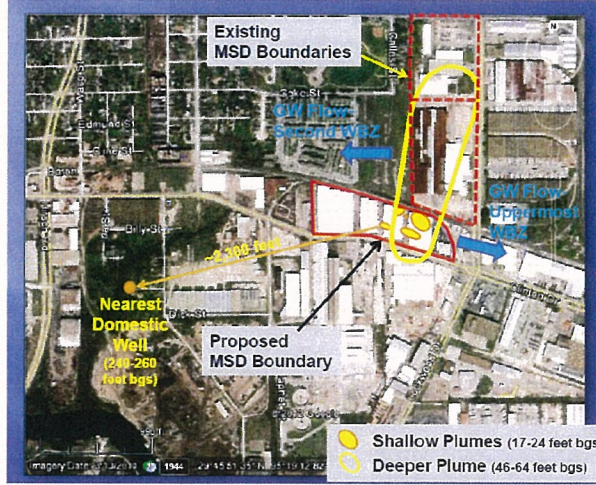


Earle M. Jorgensen Company

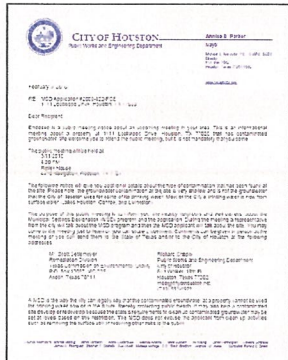


- 1936 – Developed with warehouse by Earle M. Jorgensen Company
- 1940's to early 1980's – Additional warehouses, office building constructed
- Past Operations: warehousing, cutting, and distribution of metal piping, tubing, and sheet metal
- 2004 – Property sold
- Current Operations: metals warehousing/distribution

Earle M. Jorgensen Company

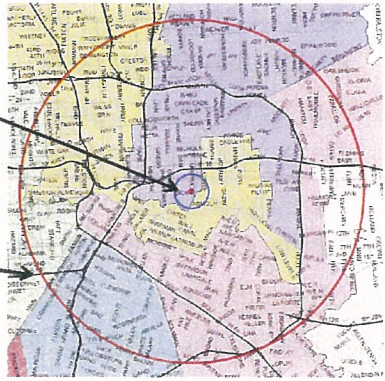


MSD Notice Letters



Property Owners
First-Class Mail
½-Mile Radius
City Requirement

Water Well Owners
Certified Mail
5-Mile Radius
State Requirement



If you received a notice through certified mail that means you have a water well according to the State's records

Municipal Setting Designations (MSDs)

Contact Information



Jedediah Greenfield
Program Manager

Public Works & Engineering
City of Houston,
1002 Washington, 2nd Floor
Houston, Texas 77002



msd@houstontx.gov
(832) 394-9005

Municipal Setting Designations (MSDs)

