

SOLID WASTE MANAGEMENT

# Service Delivery Council Committee

Mark C. Wilfalk, Director

June 26, 2024



SOLID WASTE MGT.



# SOLID WASTE MANAGEMENT



Garbage



Recycling



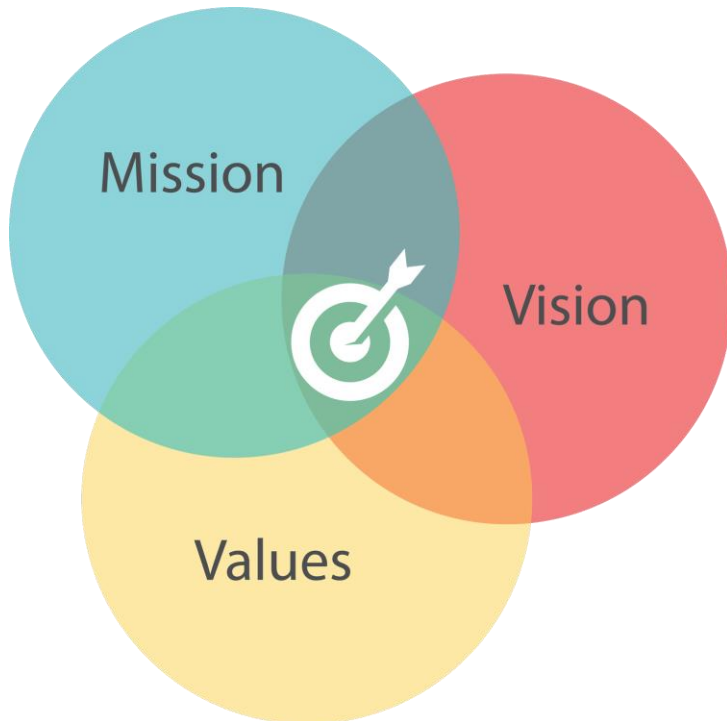
Tree/Junk Waste



Depository



Supplemental Services

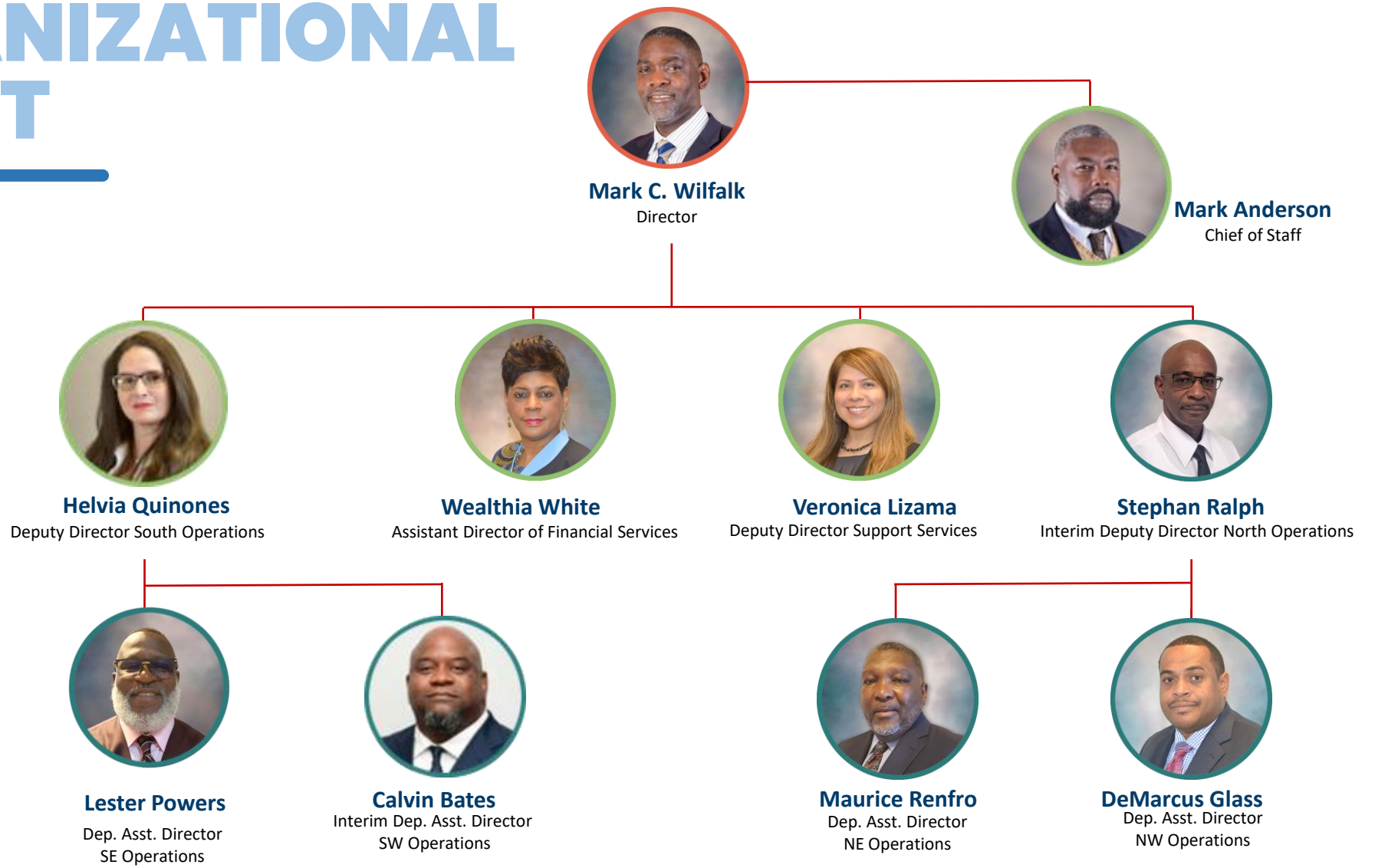


**MISSION** To provide the city with integrated municipal waste management services designed to support environmental health, sustainability, and economic development in all communities throughout Houston

**VISION** To preserve the cleanliness of our communities through the provision of efficient, reliable, and sustainable solid waste management services in order to create a One Clean Houston.

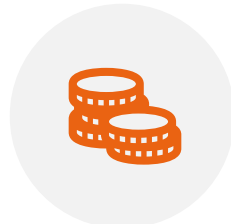
**VALUES FACTS:** Fairness, Accountability, Customer Service, Teamwork, and Safety.

# DEPARTMENT ORGANIZATIONAL CHART



# DEPARTMENT GOALS & OBJECTIVES

## SOLID WASTE MANAGEMENT



Financial Sustainability



Waste Reduction & Recovery



Quality Service



Long-term Disposal Capacity



Environmental Responsive



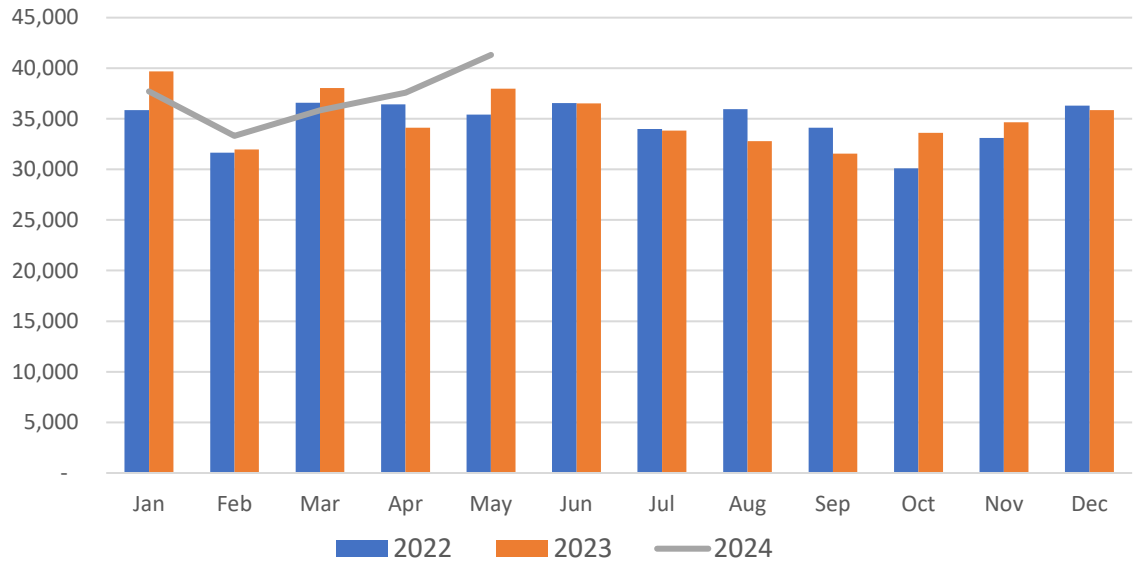
Government that Works

# GARBAGE AND BULK WASTE TONNAGE

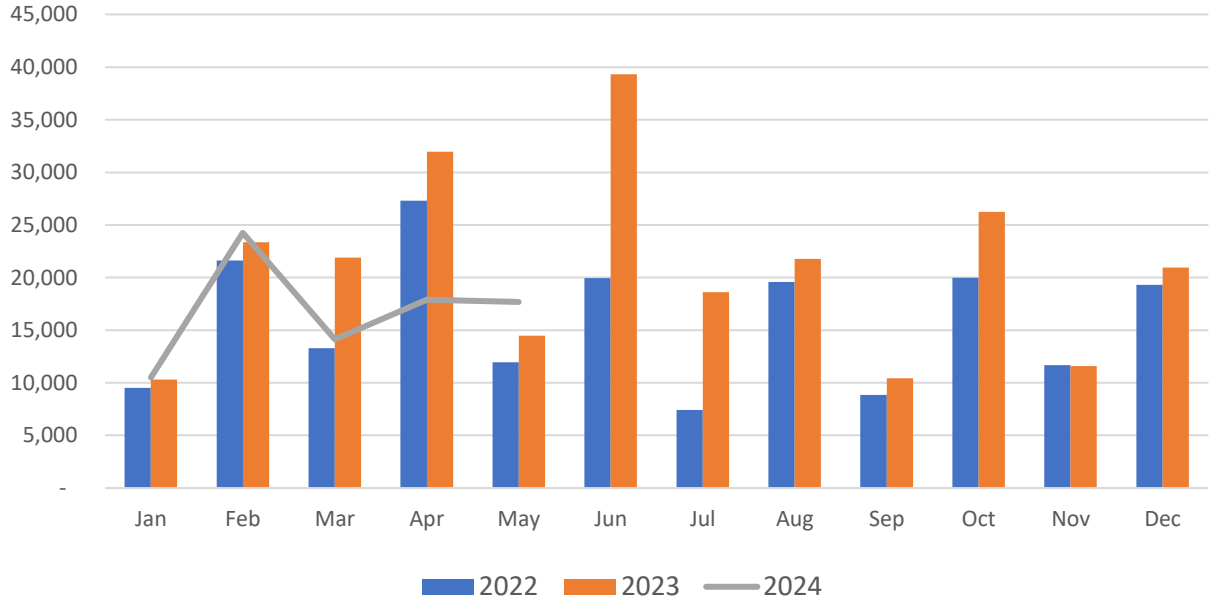
2024 ANNUAL HOUSEHOLD GARBAGE  
**420,608 TONS**  
DISPOSED

2023 ANNUAL HEAVY TRASH, JUNK WASTE  
**250,857 TONS**  
DISPOSED

### Household Garbage Tonnage



### Bulk Trash Tonnage (Heavy Trash, Junk Waste)



# TREE AND YARD WASTE TONNAGE

### HIGHLIGHTS

- Enhanced service delivery
- Any D6400 bio-degradable bag will do!
- Additional vehicles

### CHALLENGES

**8 ROUTES**  
Per Service Center

**UNDERSTAFFED**  
+  
**UNDERBUDGET**  
=  
**INCONSISTENT SERVICE**



May 9, 2024



✓ **100% Compostable Bag** ASTM D6400

✓ **100% Biodegradable Bag** ASTM D6400

✓ **Reusable Container**  
With lid and 50 lb. weight limit.

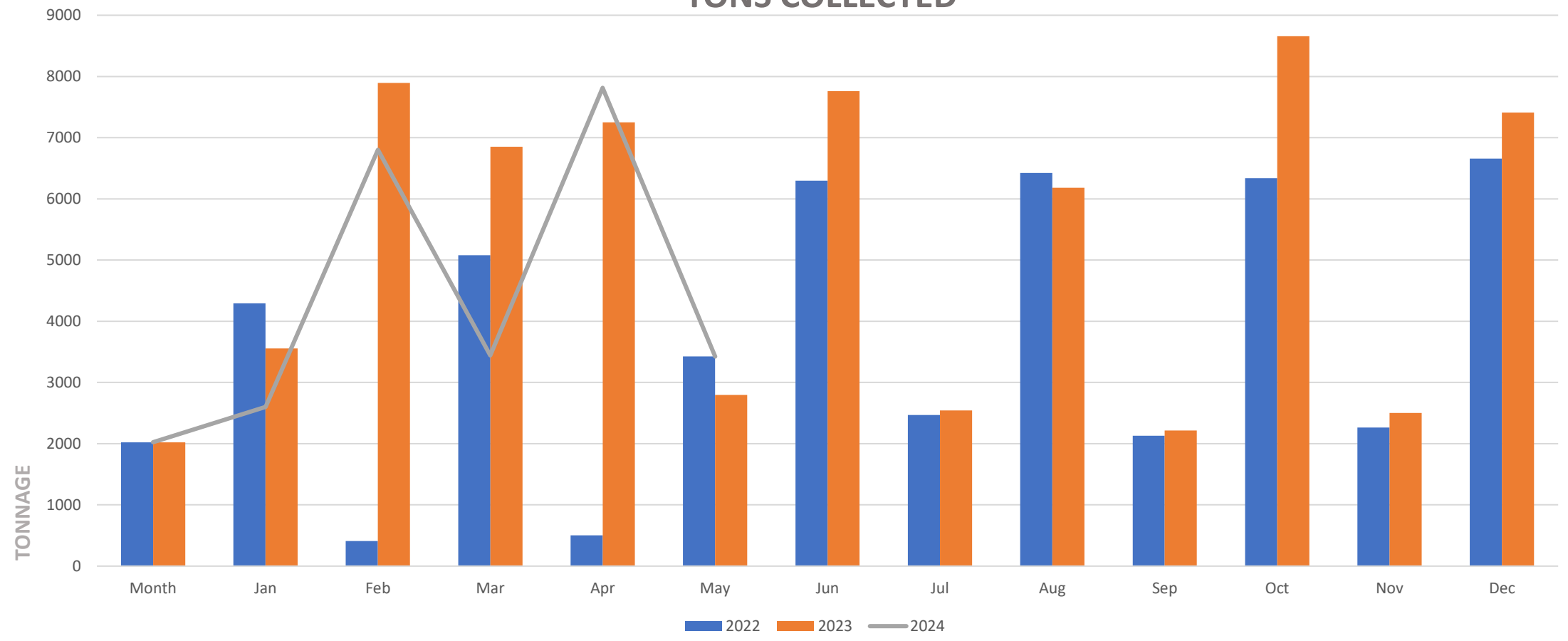
# TREE AND YARD WASTE TONNAGE

**62,809**  
Annual Tons Received

---

**35,807**  
Total Tons Sold

TONS COLLECTED



# CITY-WIDE RECYCLING PROGRAM

### HIGHLIGHTS

- Improved on-time collection rate by 30%
- Expanded partnerships/Explore opportunities
- Expanded commodity types for collection
- Reduced Vacancy rates
- Grant opportunities
- Rerouting coming soon

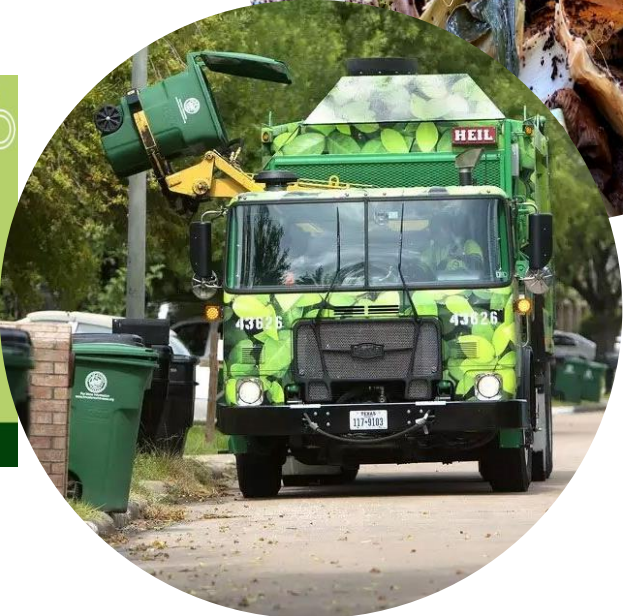
### CHALLENGES

**39 ROUTES  
TOTAL!**

**UNDERSTAFFED**  
+  
**UNDERBUDGET**  
=  
**INCONSISTENT  
SERVICE**

ON-TIME  
COLLECTION RATE  
**30%**  
IMPROVEMENT

WHAT GOES WHERE?  
**HTX  
COLLECTS  
APP CAN  
HELP!**



# EXPANDED WASTE DIVERSION

## HOUSTON RECYCLING COLLABORATION



- Increased diversity of plastic recycling
- Launched 6 Drop-Off Locations at Neighborhood Depositories
- Increased Recycling Partnerships
- Bag It & Bring It Campaign



HISD Plastics Recycling Program



# EXPANDED COMPOSTING PILOT

Residents had the opportunity to drop off food scraps at four convenient locations, contributing to ongoing efforts to divert waste from landfills.

### HIGHLIGHTS

- Six-week Food Waste Drop-Off pilot program
- Ran from January 22, 2024, to February 29, 2024
- Food scraps were dropped off at four convenient locations
- Built on the success of the Solid Waste Management Department's previous initiatives, such as the Pumpkin Compost Drop-Off and the Compost Pilot program



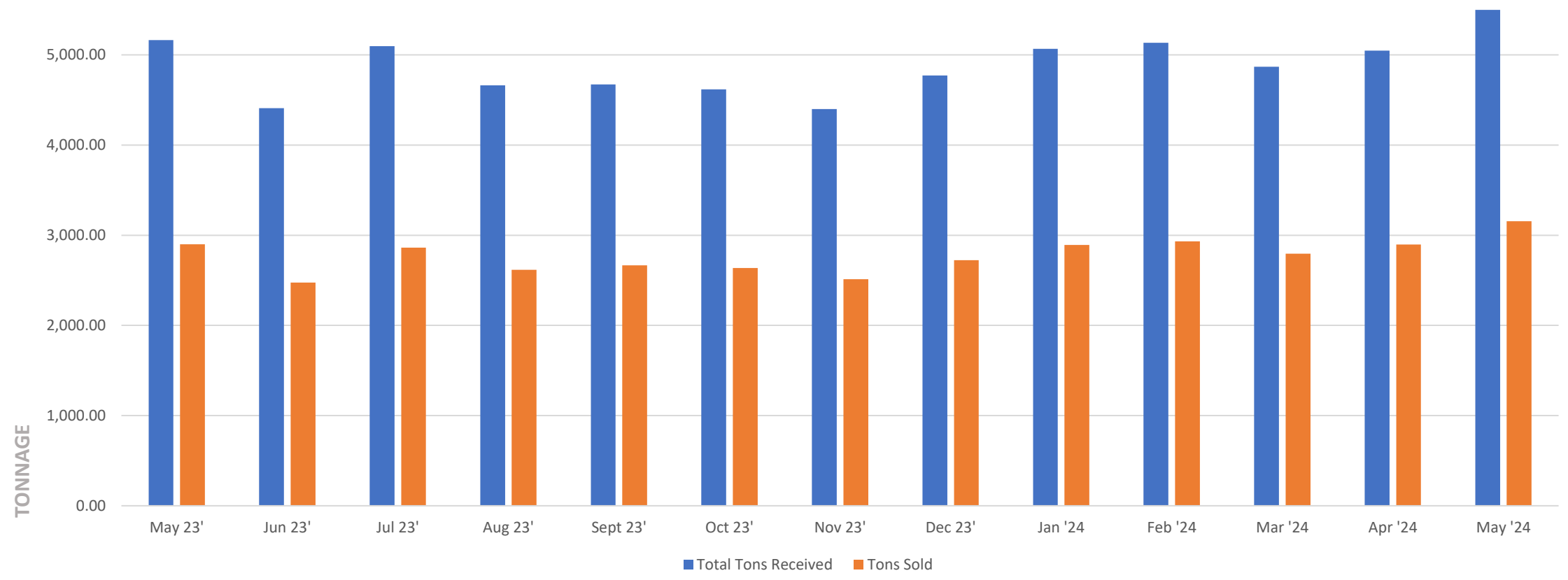
# RECYCLING TONNAGE

**63,417**  
Annual Tons Received

---

**36,068**  
Total Tons Sold

### MRF YTD 2024 Total Tons Received vs Sold

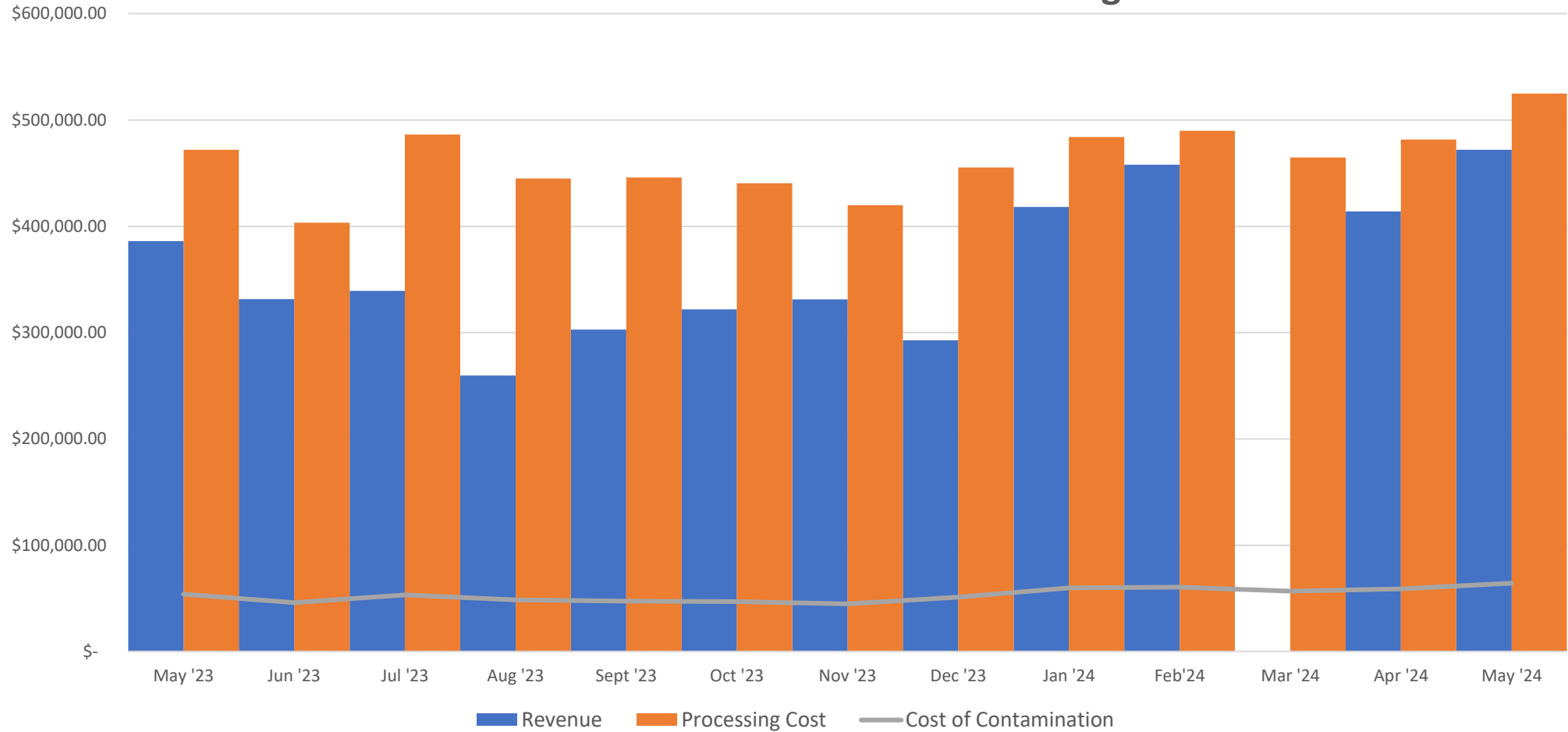


# RECYCLING

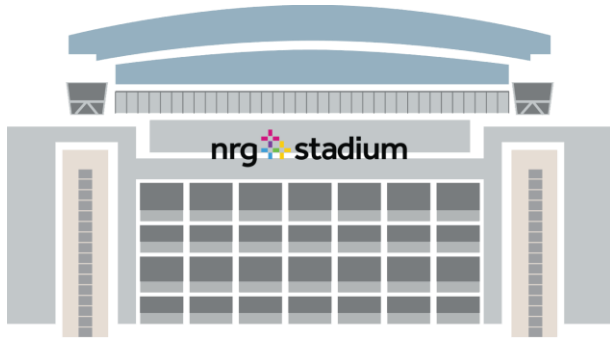
**\$4,327,241**  
Annual Revenue

**\$6,013,523**  
Processing Cost/Avoidance Cost

### YTD 2023-2024 Revenue Cost vs Processing Cost



# STORM DEBRIS COLLECTION



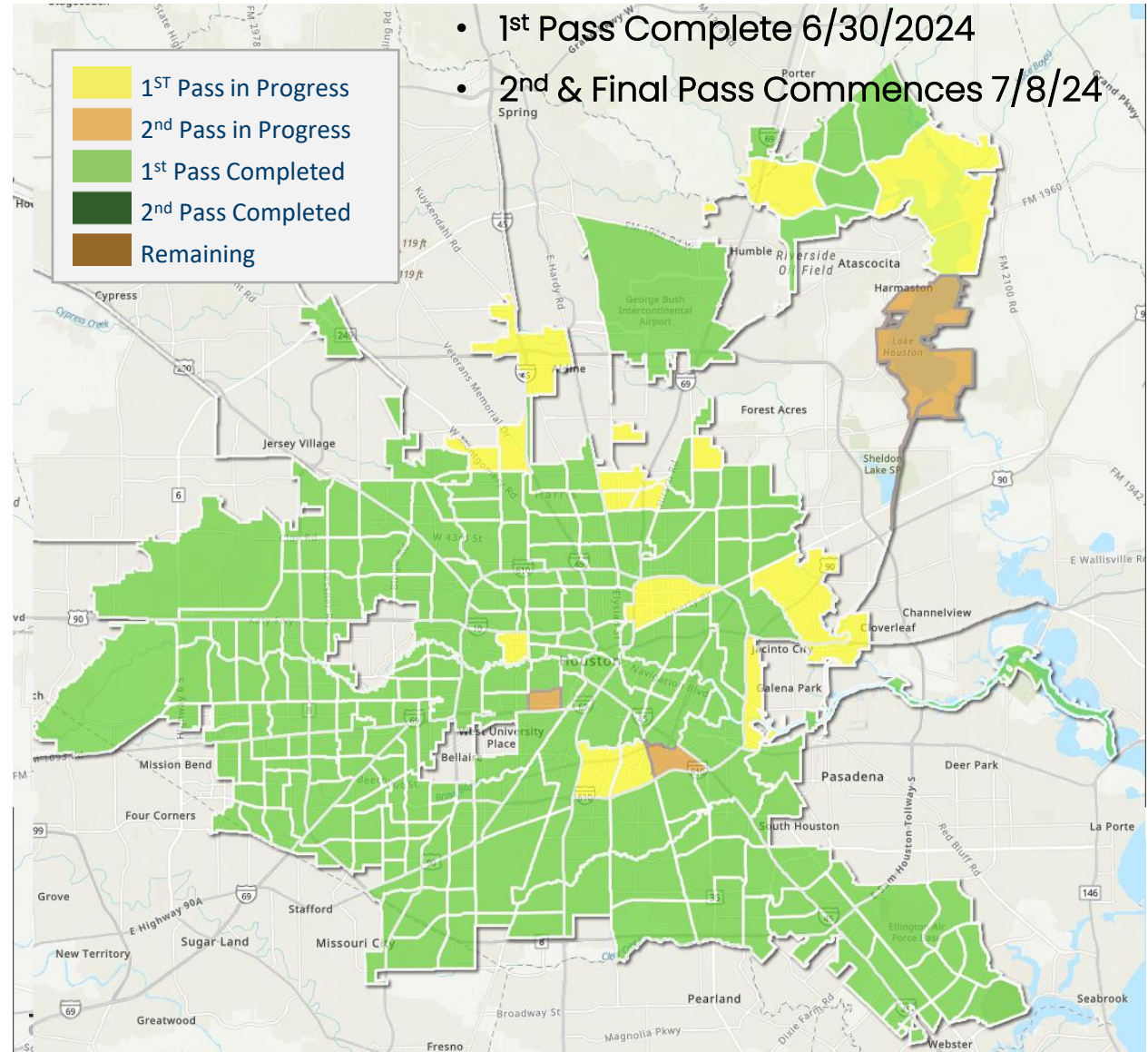
Enough collected to fill up to the second level of NRG Stadium



May 23 to present  
**1.6M**  
CUBIC YARDS

Day of Storm Debris Operation	Average Cubic Yards Per Load	Average Trucks Per Day
<b>34 of ~90</b>	<b>46.4</b>	<b>183</b>
Average Daily Truck Loads	Average Daily Cubic Yards Collected	Cumulative Cubic Yards Collected
<b>1,045</b>	<b>48,505</b>	<b>1,550,279</b>

\*Data points were captured June 23, 2024



# ILLEGAL DUMPING EFFORTS

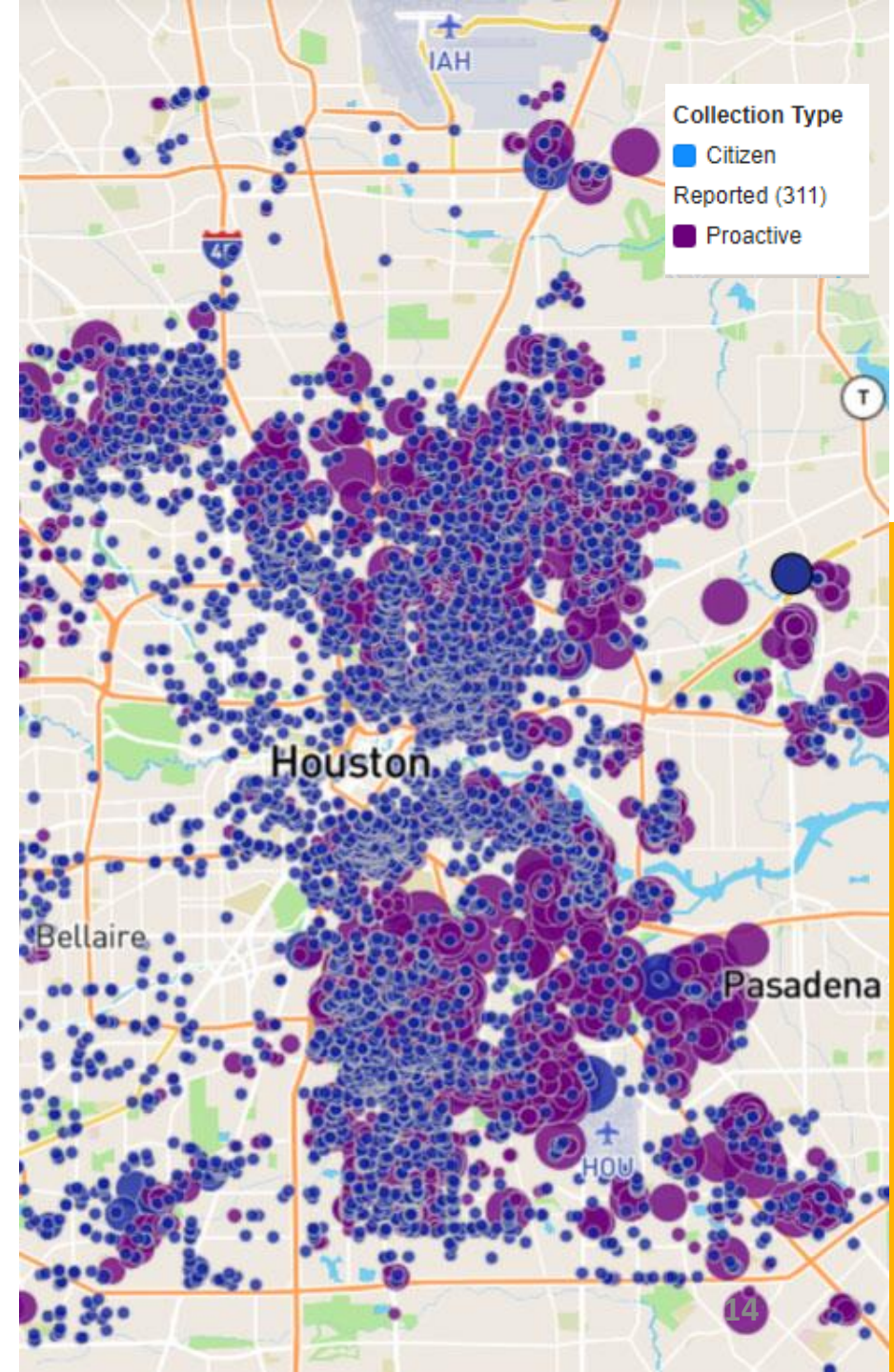
**10.80K**  
Total Collections

**12.73**  
Avg. Cubic Yards [Proactive - Est.]

Collections By Month



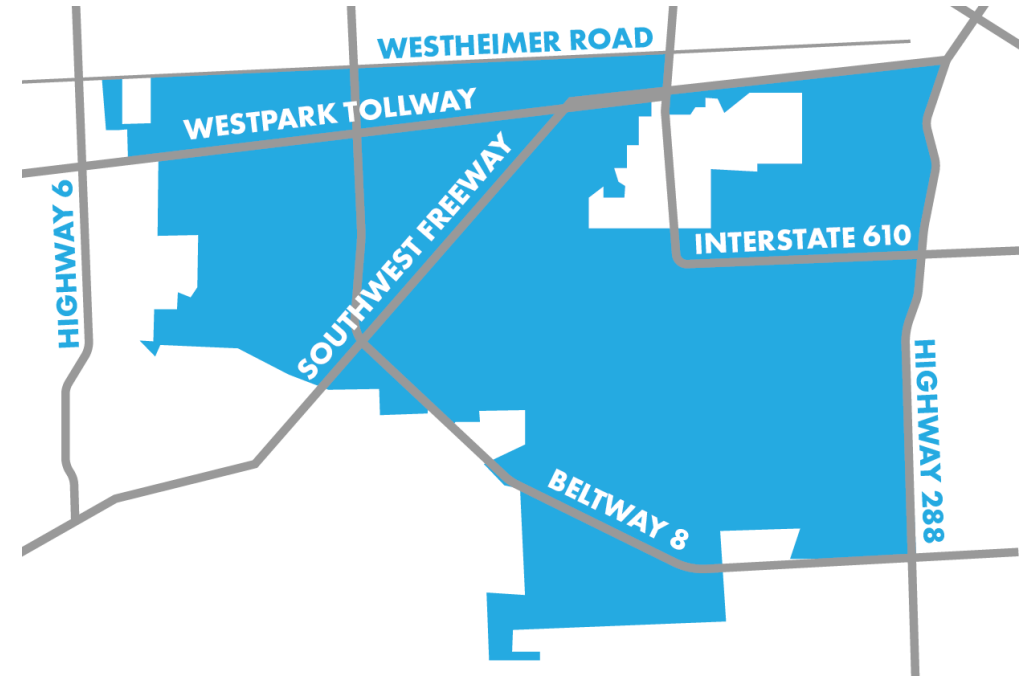
Map provides geographical locations of collection efforts throughout the city over the past 6 months.



# ON-DEMAND HEAVY TRASH

## HIGHLIGHTS

- Reduces the placement of uncollectable items & improves diversion rates
- Maximizes the efficiency of vehicles & crews servicing bulk collections (*balancing workload over entire year*)
- Improves customer satisfaction with solid waste service
- Reduces illegal dumping



EASY TO SCHEDULE



Resident sets an appointment via 311 or online for Solid Waste to collect bulky items

Citizen identifies the type of heavy trash

Solid Waste creates an optimized collection route based on appointments, heavy trash types and anticipated tonnage

Upon booking, citizen places heavy trash on curb the day before scheduled collection day

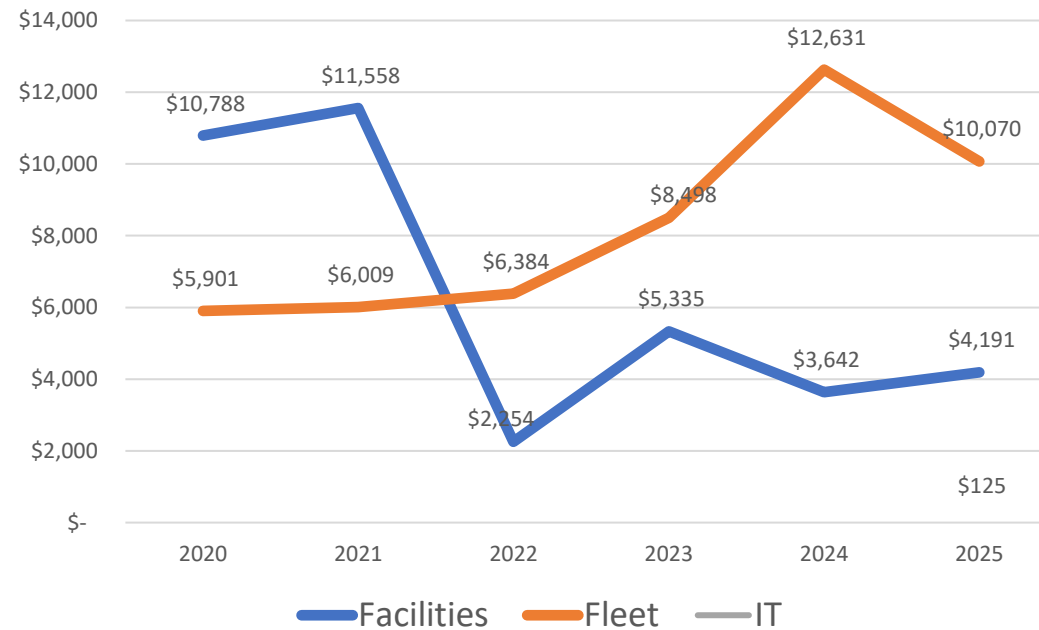
Crew comes and collects on regular scheduled collection day

# CAPITAL IMPROVEMENT PLAN

## PRIORITY PROJECTS

- Gasmer Recycling Transfer Station – P3 award state
- Northwest Transfer Station – Funded FY25-26
- Northeast – under construction
- Southeast – needs improvements
- Vehicles – Increased funding directly impacts services

Capital Improvement Plan FY20-25





# ENGAGE AND EDUCATE COMMUNITIES

## Join a Neighborhood Cleanup, Electronics Recycling, B.O.P.A., or Waste Reduction Events

### COMMUNITY MESSAGING

- Engage Neighbors for Community Clean-ups
- Commit to Teaching our Younger Generations the importance of Solid Waste Systems and Recycling
- Community Outreach Events for your neighborhood
- Share community resources
- Engage fellow law enforcement by providing tips for investigation
- Keep communication open with community leaders and elected officials



# MOBILE APP



## Stay Up to Date – HTX Collects

HTX Collects is a mobile app that helps residents stay better connected with the City’s waste and recycling collection programs.

### MOBILE APP HIGHLIGHTS

- The mobile app can remind you of your collection day, so you’ll never forget again!
- Residents can print a personalized collection calendar.
- Sign up for service reminders by email or phone.
- Receive alerts when your collection service may be delayed.
- Challenge your recycling knowledge in our new “Chase the Waste” game!
- The Waste Wizard will tell you how to properly dispose of an item, provide the drop-off location closest to you, and any special instructions needed.



**ANY**  
**QUESTIONS?**

