

Harris County & City of Houston Illegal Dumping Camera Project Presentation

Presented by: *Harris County Environmental Crimes Unit
Harris County Constable, Precinct One*



Project Overview



- Round Table 2011-2012
- Amount City Council agreed upon \$250,00
- Inter-local Agreement kicked off January 1, 2016
- Camera program started with 25 dumpsites 5 per district
- Districts B, D, H, I, K
- Initial agreement was 3 years
- Additional money between 2017-2018 will have grown the project to 48 sites being worked throughout the city





Additional Cameras

- District B, D increased cameras 2017 to 11
- District H to 12
- District also increased 2 sites
- District A added 1 cameras
- Total of 49 monitored dumpsites
- Harris County Pct. 1 has purchased cameras
- CenterPoint
- Flood Control

Total cameras 137



Harris County Environmental Crimes Unit



City Of Houston received a complaint from the DOJ 2023

One Clean Houston was formed

City Of Houston has dedicated to spend 1.9 million for enforcement

Replace 75 cameras due to end of life/technology

Purchase an additional 50 cameras

Add 6 new investigators just for the City Of Houston

The existing 6 investigators will continue to work Illegal dumping's along with other duty's related to other environmental crimes such as water pollution



Demographics

- Average Age: 50 years old
- Majority of dumping's happen during the hours of 3:00PM to 9:00PM
- Dumping's are occurring evenly M-F
- Average weight a person is dumping 75 pounds
- Mostly dumping furniture , tires and wood debris (witch is all untraceable evidence)
- **99.9 % of the dumping's have no traceable evidence**
- **Most dumping's occur with in 3 to 5 miles of where the person lives**

Who Dumps and Why



Every type of person one can imagine dumps. From the everyday soccer mom to public servants.

Why do they Dump?

- Environmental Education
- To save or make money
- Too lazy to dispose of the waste



Illegal Dumping HEALTH AND SAFETY CODE 365.012



- A person commits an offense if the person disposes or allows or permits the disposal of litter or other solid waste at a place that is not an approved solid waste site by the Texas Commission on Environmental Quality, including a place on or within 300 feet of a public highway, on a right-of-way. On other public or private property, or into inland costal water of the state



Fines and Penalties

- **Class C-applies weighs five pounds or less**
up to \$500.00 fine
- **Class B-applies weighs over 5-500 lbs.**
up to 180 days jail/up to \$2,000.00 fine
- **Class A- applies weighs over 500-999 lbs.**
180 days to 1yr jail/up to \$4,000.00 fine
- **Felony applies weighs over 1,000 lbs**
up to 2 yrs jail and or fine \$10,000.00



Company's Dump Too!

❑ An offense under this section is a Class A misdemeanor if:

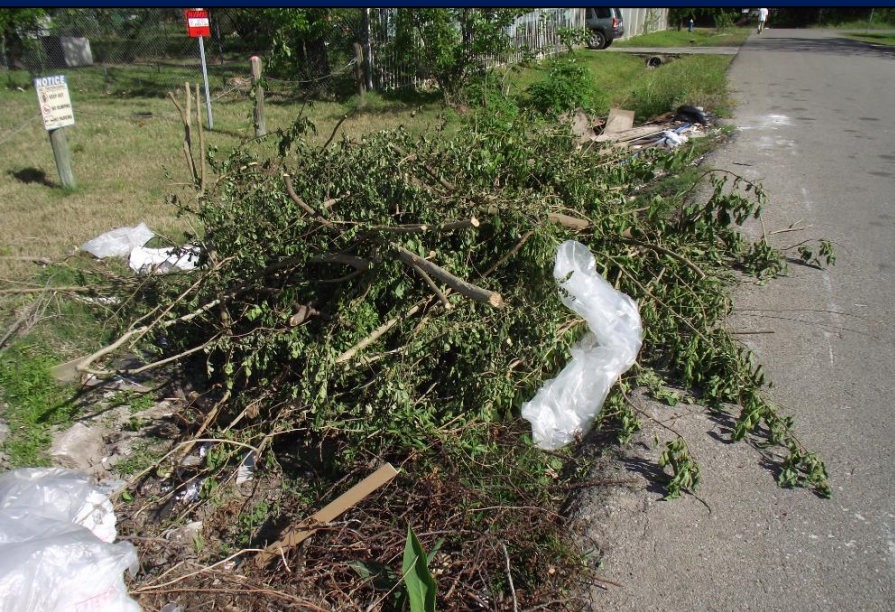
The litter or other solid waste is disposed of for a commercial purpose and weighs more than five pounds but less than 200 pounds or has a volume of more than five gallons but less than 200 cubic feet.

❑ An offense under this section is a state jail felony if:

The litter or other solid waste is disposed for a commercial purpose weighs 200 pounds or more or has a volume of 200 cubic feet or more

Pictures

Before & After



Before



After

Batterson

Pictures

Before & After



Before



After

East 32nd

Door Hanger



It is our desire to assist you and your community in keeping it a desirable place to live. We need your help to get it done. By placing your heavy trash out early you are not only inviting people to dump but you are also violating **CITY OF HOUSTON ORDINANCE 39-77(D) UNLAWFUL TO PLACE OR TO ALLOW REMAINING ANY MATERIALS AT THE CURBLINE FOR HEAVY TRASH PRIOR TO 6:00PM OF FRIDAY BEFORE**, which could result in a fine in the amount of **\$310.00-\$500.00**.

Please help Harris County Precinct 1 Constable, Alan Rosen and the Harris County Environmental Crimes Unit in keeping our City clean and beautiful for generations to come.

- Residents may dispose of their Tree Waste at their curbside. Tree Waste is collected during **ODD** numbered months and Junk Waste is collected during **EVEN** numbered months.

Tree Waste

- "Tree Waste" is defined as "clean" wood waste such as tree limbs, branches, and stumps. Lumber, furniture, and treated wood will **NOT** be accepted. Junk Waste may **NOT** be placed for collection during a Tree Waste month.

TREE WASTE MONTHS ARE: JANUARY, MARCH, MAY, JULY, SEPTEMBER & NOVEMBER ONLY!

Junk Waste

- "Junk Waste" is defined as items such as furniture, appliances, and other bulky material. Tree Waste is accepted during Junk Waste months; however, to ensure your Tree Waste is recycled, you may hold your tree waste materials until the Tree Waste designated month or take it to a Neighborhood Depository/Recycling Center.

JUNK WASTE MONTHS ARE: FEBRUARY, APRIL, JUNE, AUGUST, OCTOBER & DECEMBER ONLY!

Placement Instructions

- "Tree Waste" and "Junk Waste" should be placed adjacent to the front curb in a location easily accessible to the collection vehicle **between THE HOURS OF 6:00pm THE FRIDAY BEFORE AND 7:00am ON THE SCHEDULED COLLECTION DAY**. Materials should not be placed in the street, on the sidewalk, or other right-of-way, or in any manner which would interfere with pedestrian or vehicular traffic.

Restrictions

- No more than 8 cubic yards (about the size of a minivan) of "Junk Waste" or "Tree Waste" may be placed at the curb for collection.
- A maximum of four cubic yards of building materials (not to include roofing shingles, brick, plaster or concrete) generated by the residents in connection with the maintenance of the residential property may be collected by Solid Waste Management Department crews.
- The Solid Waste Management Department is not allowed to collect any material that was generated by contractors who were retained by a resident to perform work on his or her residential property. It is the responsibility of the contractor's activities. These contractor related activities include, but are not limited to: trimming and removal of trees, remodeling, new construction and roofing.
- If authorized items placed for collection are mixed with unauthorized items, department personnel shall not be obligated to sort the materials and may refuse the entire load.

SOLID WASTE MANAGEMENT DEPARTMENT COLLECTION SERVICES ARE NOT AVAILABLE TO MULTI-RESIDENTIAL STRUCTURES OF MORE THAN 8 CUBIC YARDS!

COH Neighborhood Depository



North – 9003 N Main

Northwest- 14400 Sommermeyer

Northeast – 5565 Kirkpatrick

Southeast – 2240 Central street

South- 5100 Sunbeam

Southwest- 10785 SW Freeway

What do I need to take with me to dump at the Depository

Photo Id

Utility Bill

Lease agreement

Times are as follow 10a 7p Tuesday-Sunday

**** and always when in doubt call 311****

Questions?

Comments and/or Concerns



Thank you!