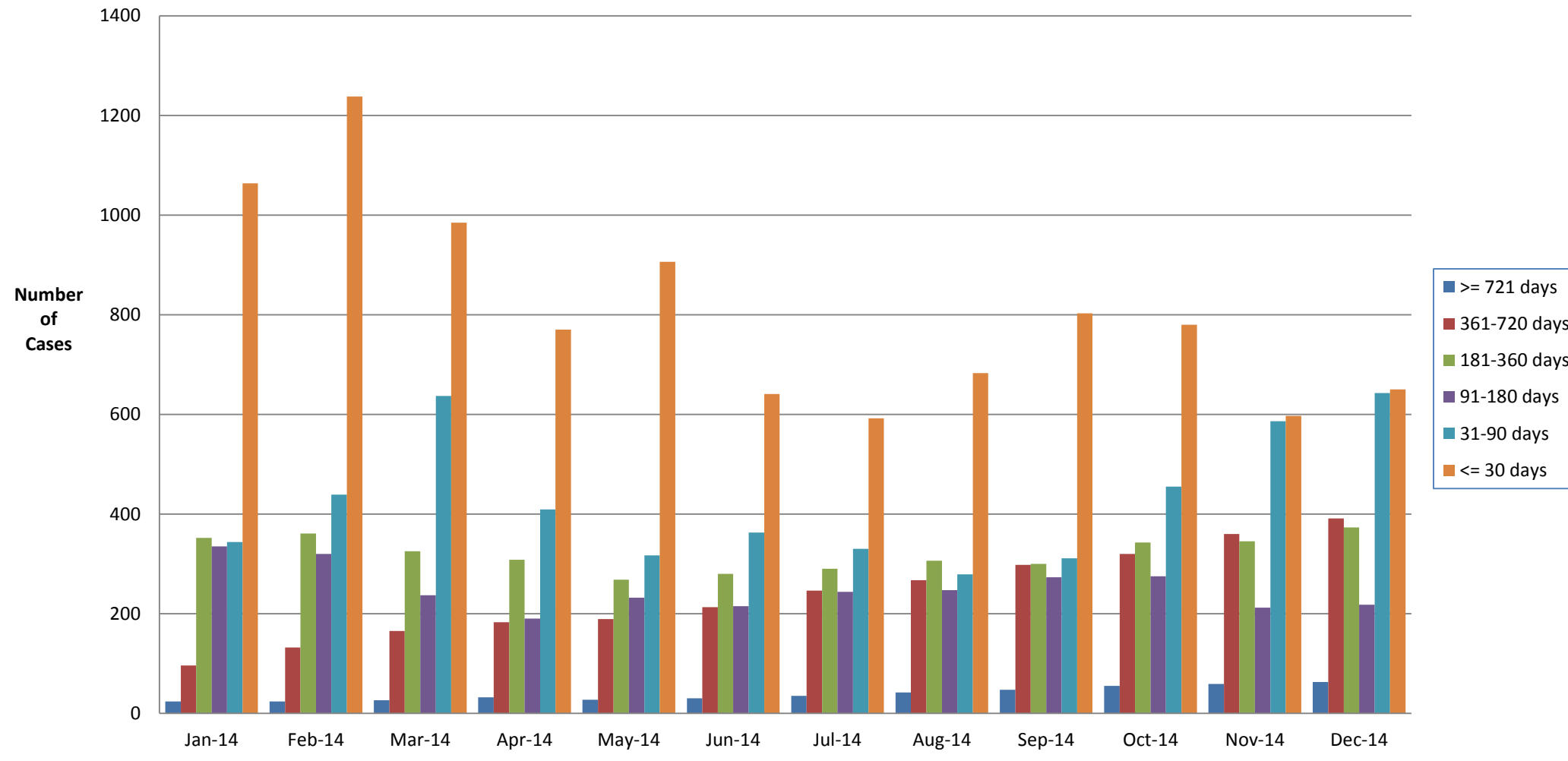


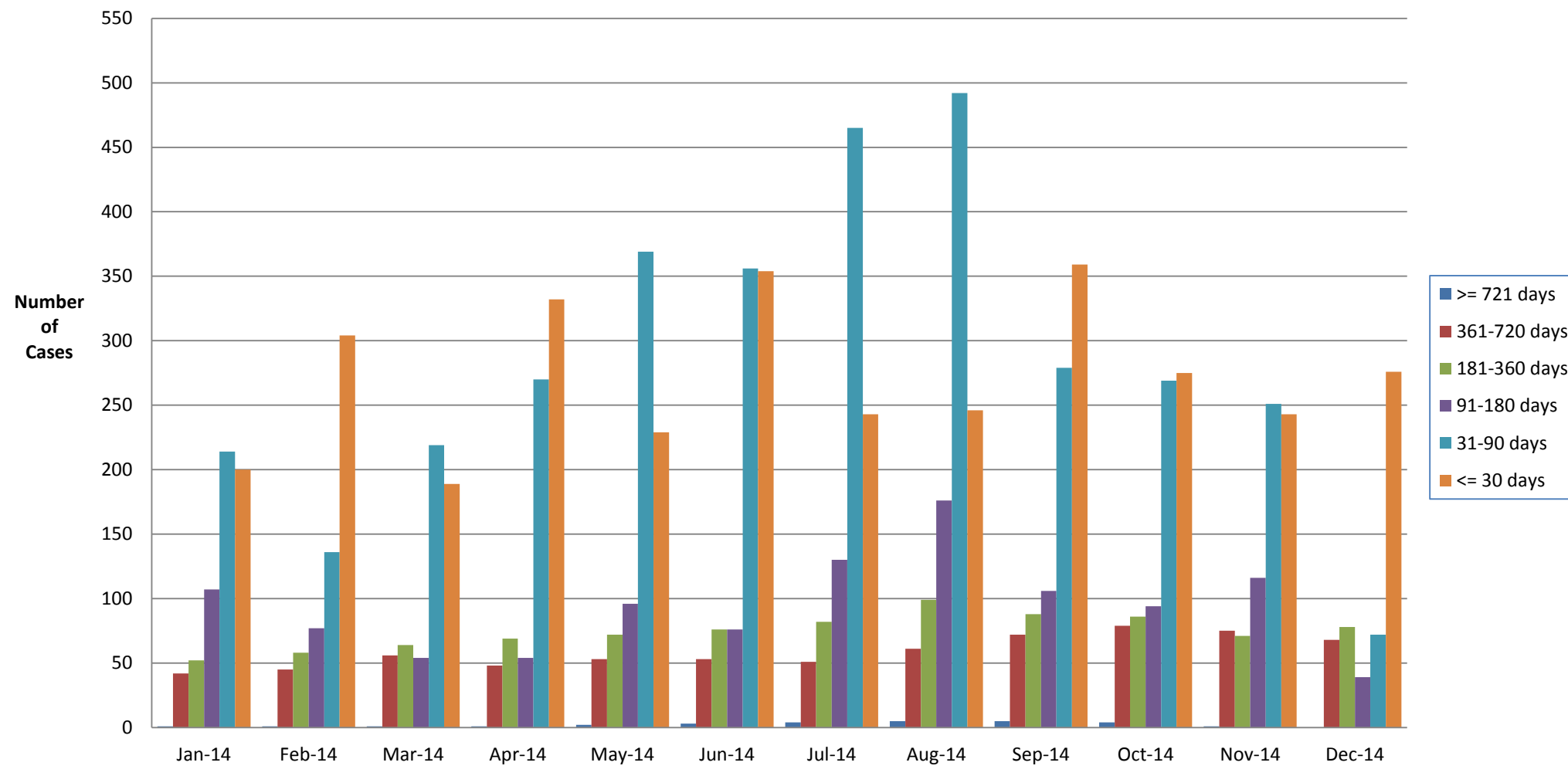
## Age of Cases - Drug Chemistry Unit

### # of Cases @ end of each month: January - December 2014



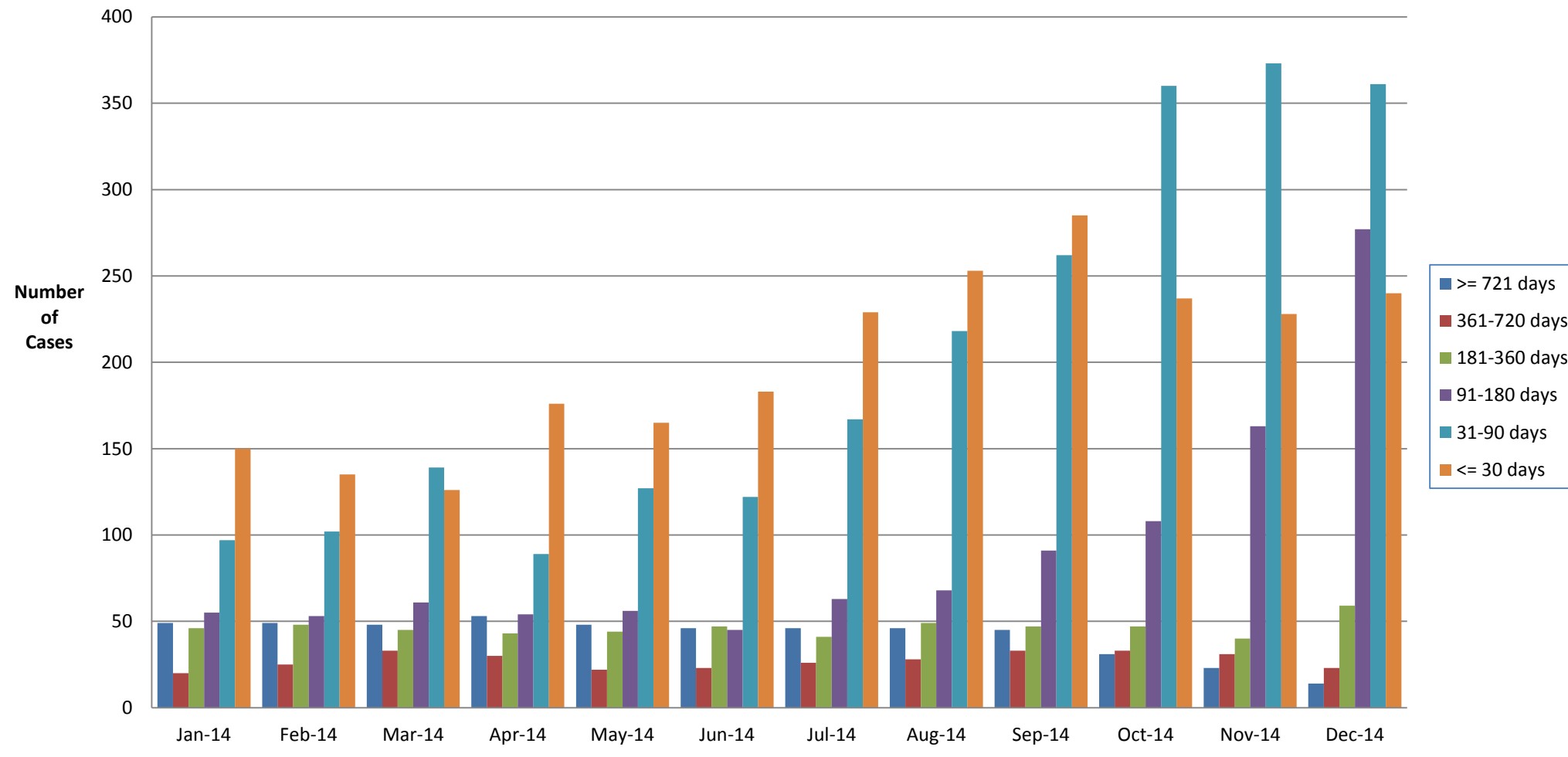
### Age of Cases - Firearms Unit\*

#### # of Cases @ end of each month: January - December 2014



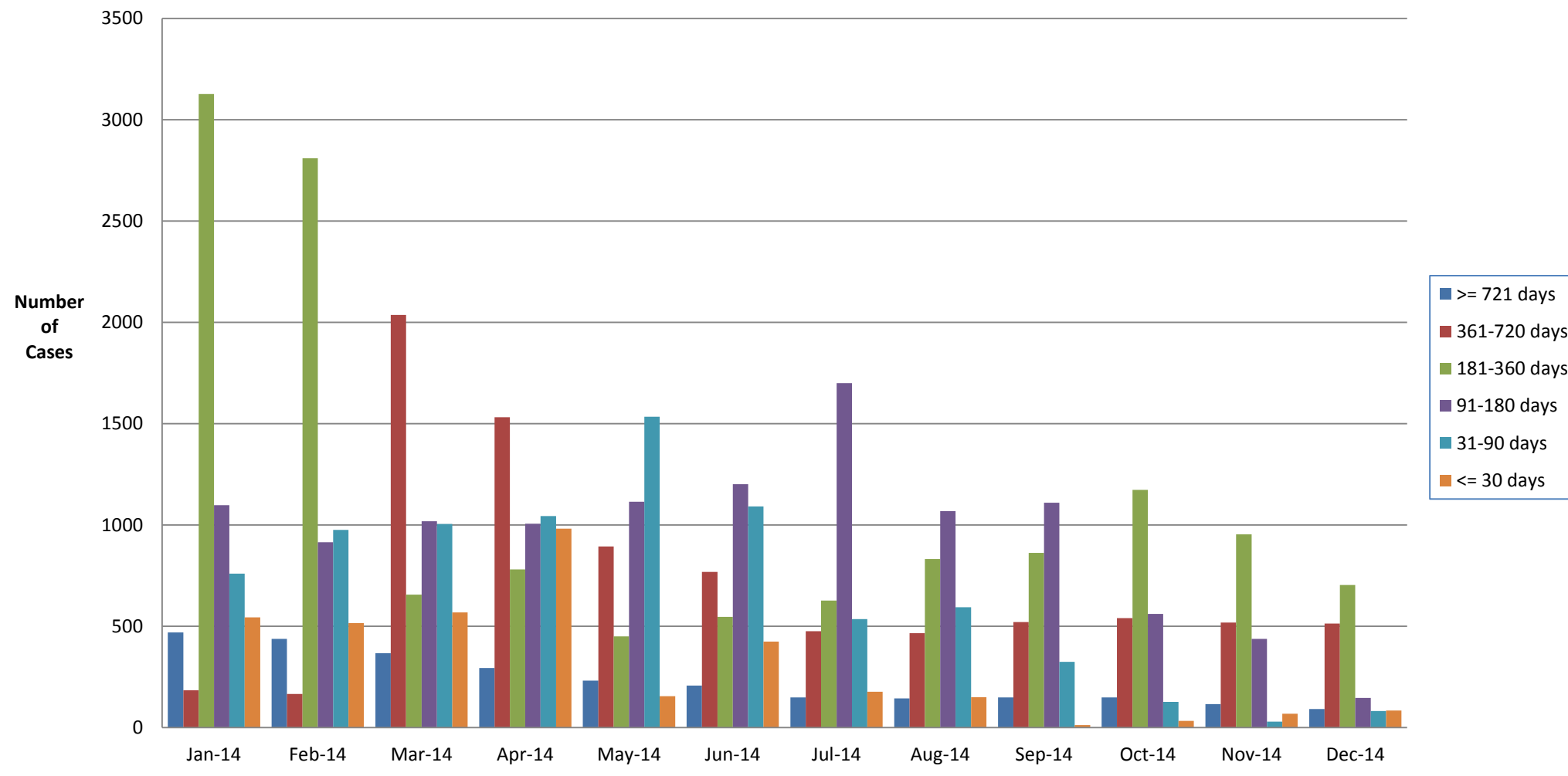
\* Includes IBIS, IBIS Hit Confirmations & Requests

**Age of Cases - Forensic Biology (in-house)\*  
# of Cases @ end of each month: January - December 2014**

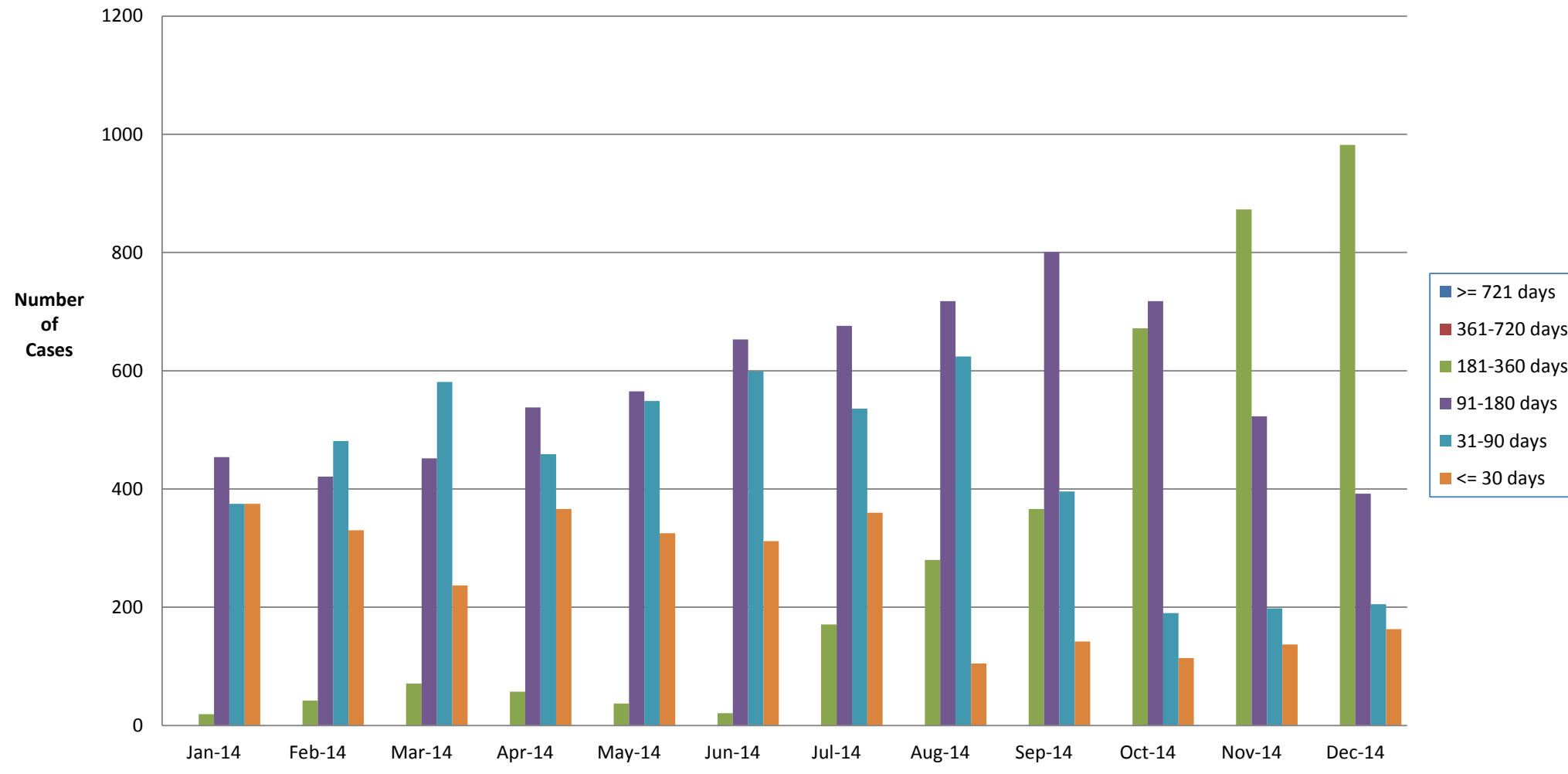


\*Includes CODIS, DNA & Requests

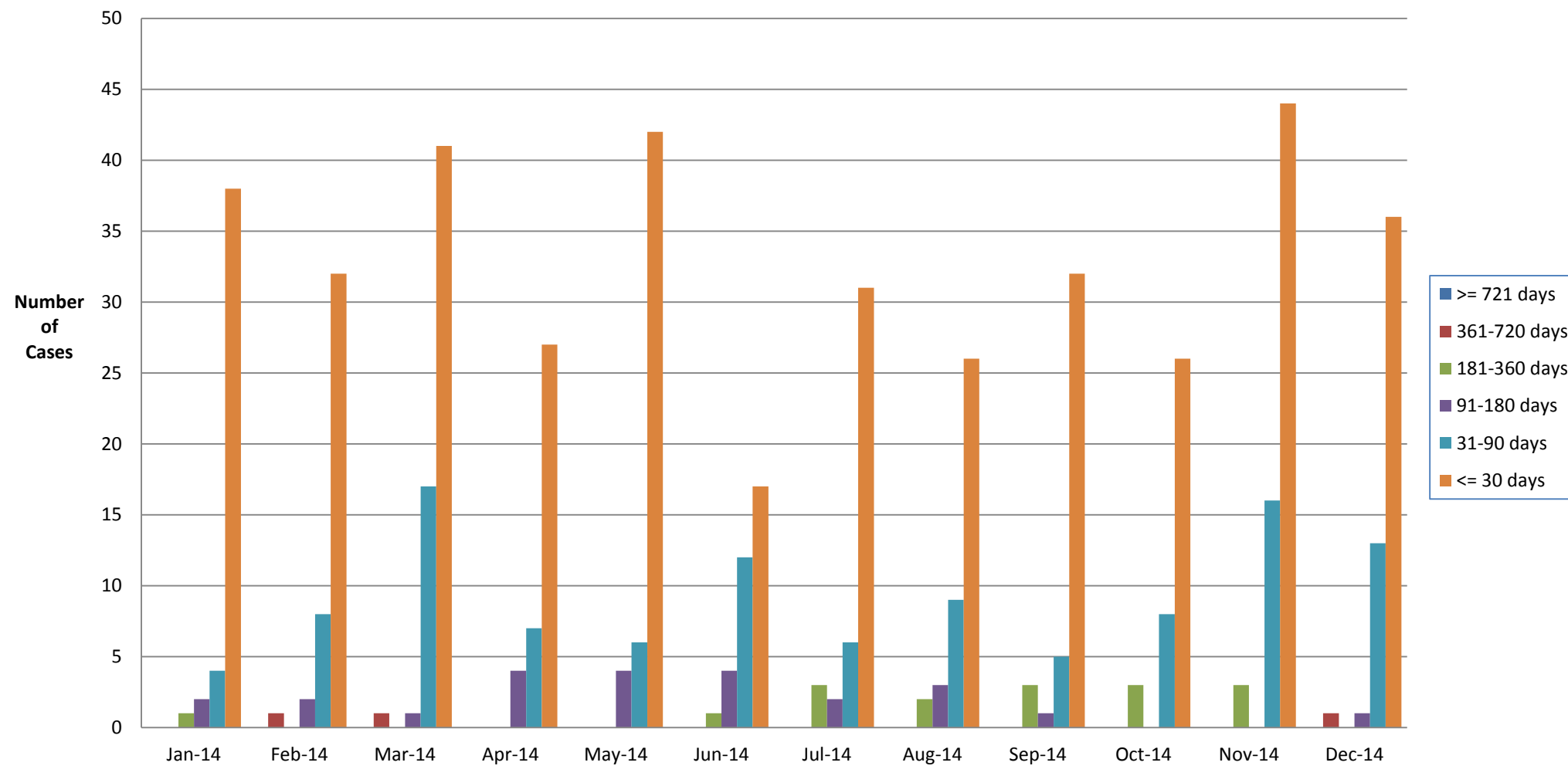
### Age of Cases - Forensic Biology (outsourced) # of Cases @ end of each month: January - December 2014



**Age of Cases - Latent Prints (AFIS & Comparisons)**  
**# of Cases @ end of each month: January - December 2014**

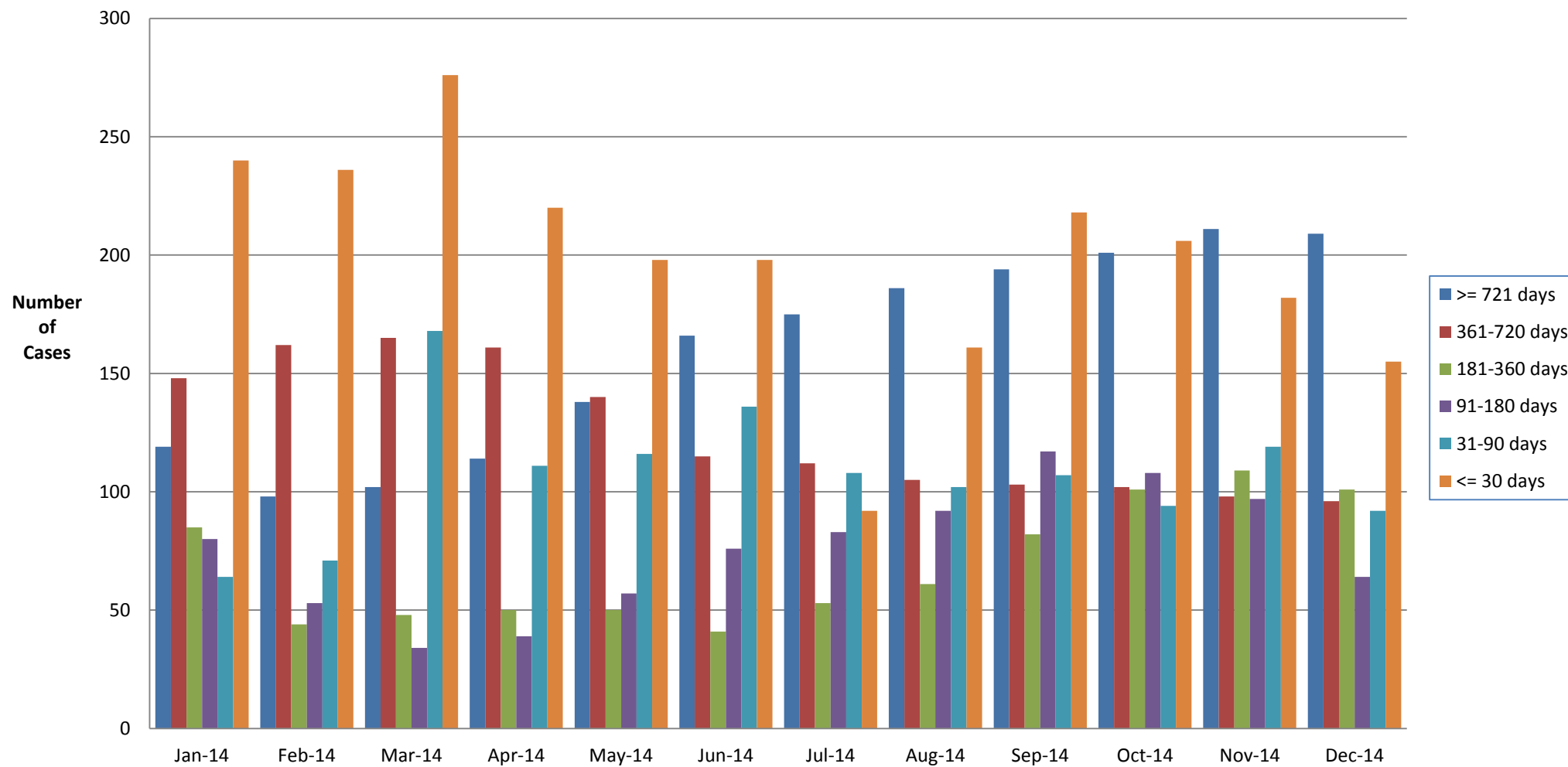


### Age of Cases - Latent Prints (Evidence Processing) # of Cases @ end of each month: January - December 2014



### Age of Cases - Toxicology Unit\*

# of Cases @ end each month: January - December 2014



\* Includes Alcohol Analysis & Toxicology Requests