



City of Houston & Harris County Joint Processing Center

Presented to Public Safety & Homeland
Security Committee

August 25, 2015

Mr. Andy Icken, Chief Development Officer, Mayor's Office

Mr. Joseph Fenninger, CFO & Deputy Director, HPD



City of Houston & Harris County JPC - Background

- The City has determined that the current City jails located at Riesner and Mykawa are increasingly costly and will require replacement
- The Riesner jail was built in the 1950's at the same time the original 61 Riesner HPD headquarters was constructed
- Annual operating costs for City jails currently exceed \$31 million
- In 2007, the City and County planned a joint city/county processing center/jail at a projected cost in excess of \$200 million; County voters turned down the bond proposal



City of Houston & Harris County

JPC - Background

- In 2013, the City and County revived discussions for a redesigned “processing center” – with a focus on booking, arraignment and potential diversion
- Total capital costs are \$100 million, approximately half the cost of the 2007 proposal; County voters approved the bond proposal.



City of Houston & Harris County Joint Processing Center

- The City and County will share in the \$100 million design, development and capital costs on a 30/70 ratio

- City's share of capital costs are:

- Design Phase	\$2,658,988
- Construction	<u>\$27,341,012</u>
Total	\$30,000,000

- The City will participate in any savings or overages on the same sharing ratio (30/70); Contingencies are built into the contract
- Funds are included in the Council-approved CIP Plan
- Projected annual operating cost savings will exceed \$4 million
- Contract presented to Council will be a fee for services provided plus use of the space for specific city use.



Joint Processing Center Projected Annual Operating Costs & City Savings

Description	2015 Budget	2016 Budget	2017 Forecast	2018 Forecast
Projected COH Annual Jail Operating Costs				
Total Civilian	15,149,146	15,066,710	15,320,648	15,579,664
Total Classified Personnel	12,923,215	13,092,615	13,179,786	13,694,756
500 - Personnel Services	28,072,361	28,159,325	28,500,434	29,274,420
510 - Supplies	219,485	221,680	223,897	226,136
520 - Other Services and Charges	666,294	672,957	679,686	686,483
Total HPD Budgets	28,958,140	29,053,962	29,404,017	30,187,039
COH - Health & Human Svcs (Medical Care)	2,400,000	2,472,000	2,546,160	2,622,545
Total COH Jail Costs	31,358,140	31,525,962	31,950,177	32,809,584
Projected JPC Annual Operating Costs Chargeable to COH				
Start-up Costs (Staff Training & Certifications)			1,000,000	
Annual Operating Costs (19,500 prisoners)			14,498,652	14,933,611
Total Projected Costs			15,498,652	14,933,611
Cost Savings to COH				
Reduction of COH Jail Operating Costs			16,451,525	17,875,972
Less: Fixed Cost of 100 Redeployed Classifieds			(13,179,786)	(13,694,756)
Net COH Cash Flow Reduction			3,271,739	4,181,216



Bayou

ility

Allen St

Heights1BikeTrail

Top St

ABC

DEF

Baker St

N San Jacinto St

Harris County Sheriff's Office

St





JPC – WEST ELEVATION NORTH SAN JACINTO



JPC Architectural Space Program

The Joint Processing Center is programmed at 238,000 gross square feet and will consist of a basement level (with tunnel connection) and three full floors.

The JPC Architectural Space Program includes all the functional areas needed to support Inmate Processing, as well as an Intake Clinic and Short-term Assessment beds. The JPC spaces include:

- Large Law Enforcement sally port with a capacity of 52 vehicles
- HPD work areas, interview rooms, administrative area, etc.
- DUI processing areas
- Officer work areas for all agencies (DIMS terminals, prisoner seating and holding, etc.)
- Evidence lockers, Line-up Rooms
- Front-Door Diversion Workspace
- Enhanced Health Screening, Receiving, Property processing and storage
- AFIS, Pre-trial Interview areas, Intake Clinic, Multi-purpose Interview Rooms
- One Municipal Courtroom and two County Probable Cause / JP Courtrooms
- Booking, Prints, Classification, Dress-out and Pre-Release Staging Areas

JPC Architectural Space Program Cont.

- Short-term Assessment Center and Workforce Housing
- Releasing & Traveler Processing area
- Re-Entry Program Area
- Lobby, Bonding, Central Records, Administration, etc.
- Staff Support

The Joint Processing Center (JPC) has a total design capacity of 1,558 detainees. The JPC is designed to accommodate the combined City of Houston (HPD) and Harris County detainee processing volume. The new facility is designed to allow the Sheriff's Office to scale up operations as the city and county population continues to grow.

BASEMENT

- ❖ Dedicated employee entrance
- ❖ Staff lockers
- ❖ Training Classroom
- ❖ Maintenance Workshop
- ❖ Central Storage
- ❖ Laundry
- ❖ Court holdover cells
- ❖ Tunnel Control Center

FIRST FLOOR

- ❖ Sallyport (52 vehicles)
- ❖ Sallyport Control Center
- ❖ HPD
 - DWI Processing
 - Evidence rooms
 - HPD Administrative Area
- ❖ Intake Open Waiting
 - Holding cells
 - Cash kiosks
 - DNA collection
 - AFIS
 - Health Screening stations
 - Diversion/Bonding Workstations
- ❖ Valuable and Bulk Property Storage
- ❖ Public Lobby
- ❖ Property Storage; Property Return (public)
- ❖ Inmate Records
- ❖ County/City Bonding
- ❖ Releasing, Dress-Out
- ❖ Re-entry program

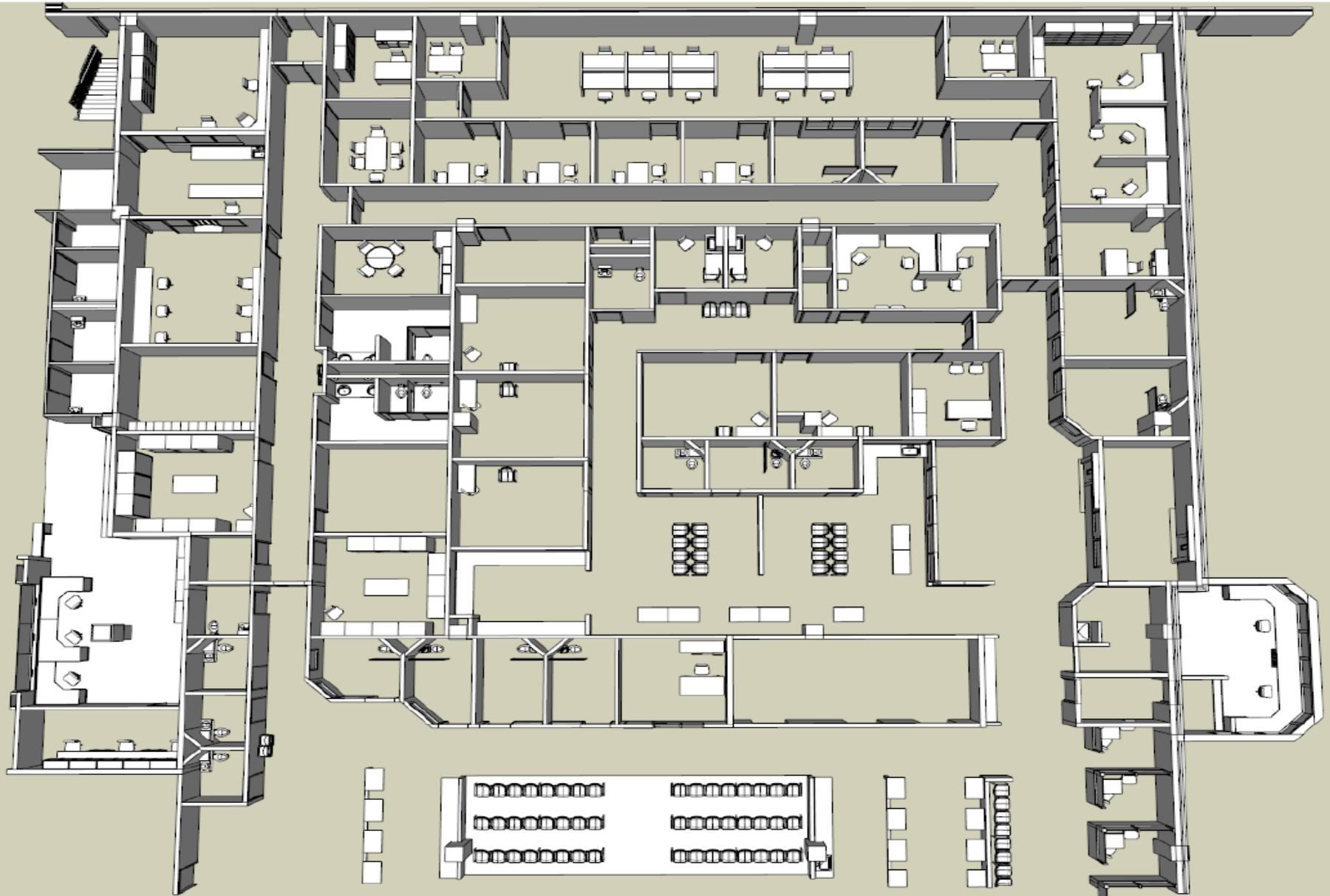
Public Lobby Public View of Bonding Windows



Sallyport entry



HPD Area



DWI - Prisoner Seating Area



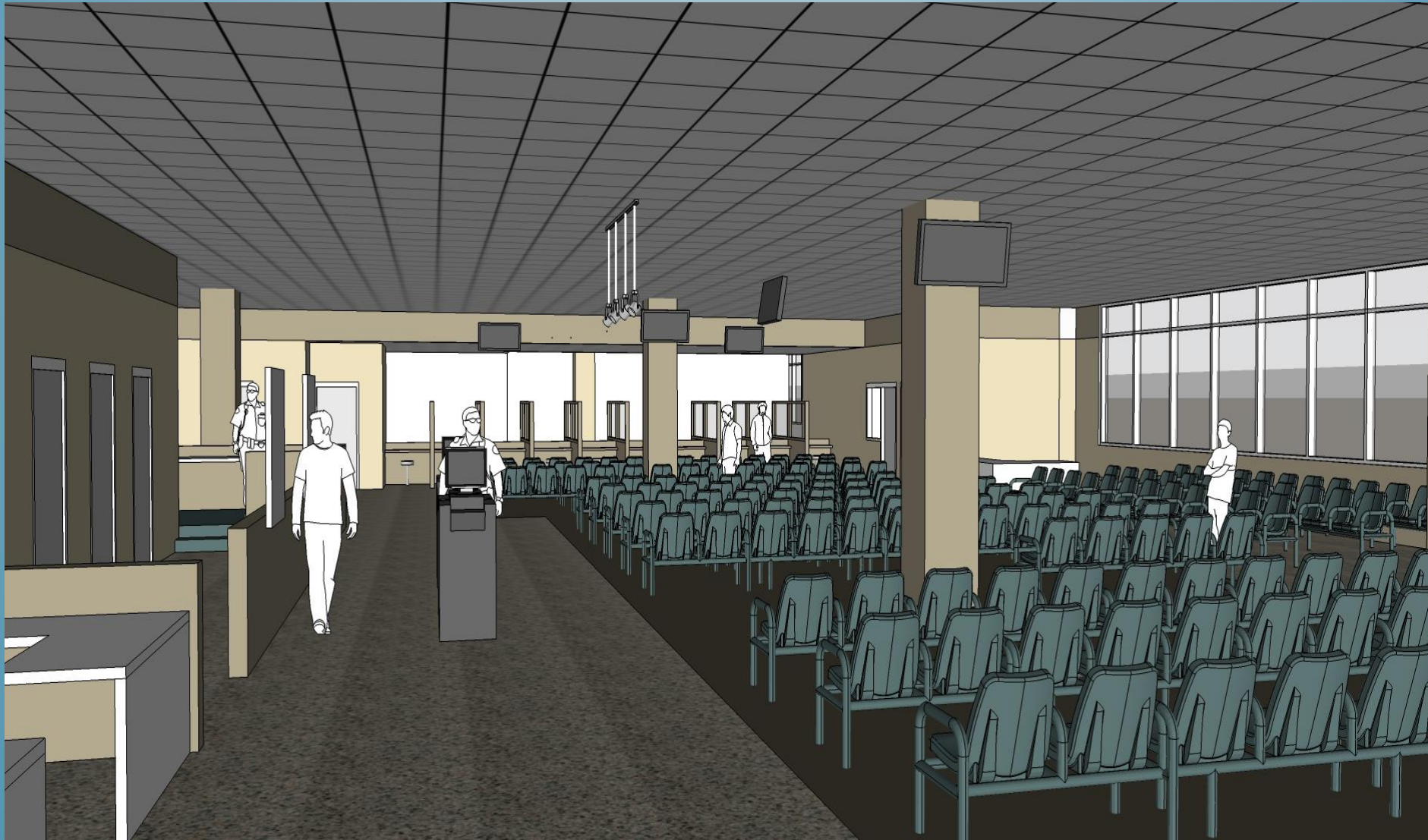
INTAKE AREA



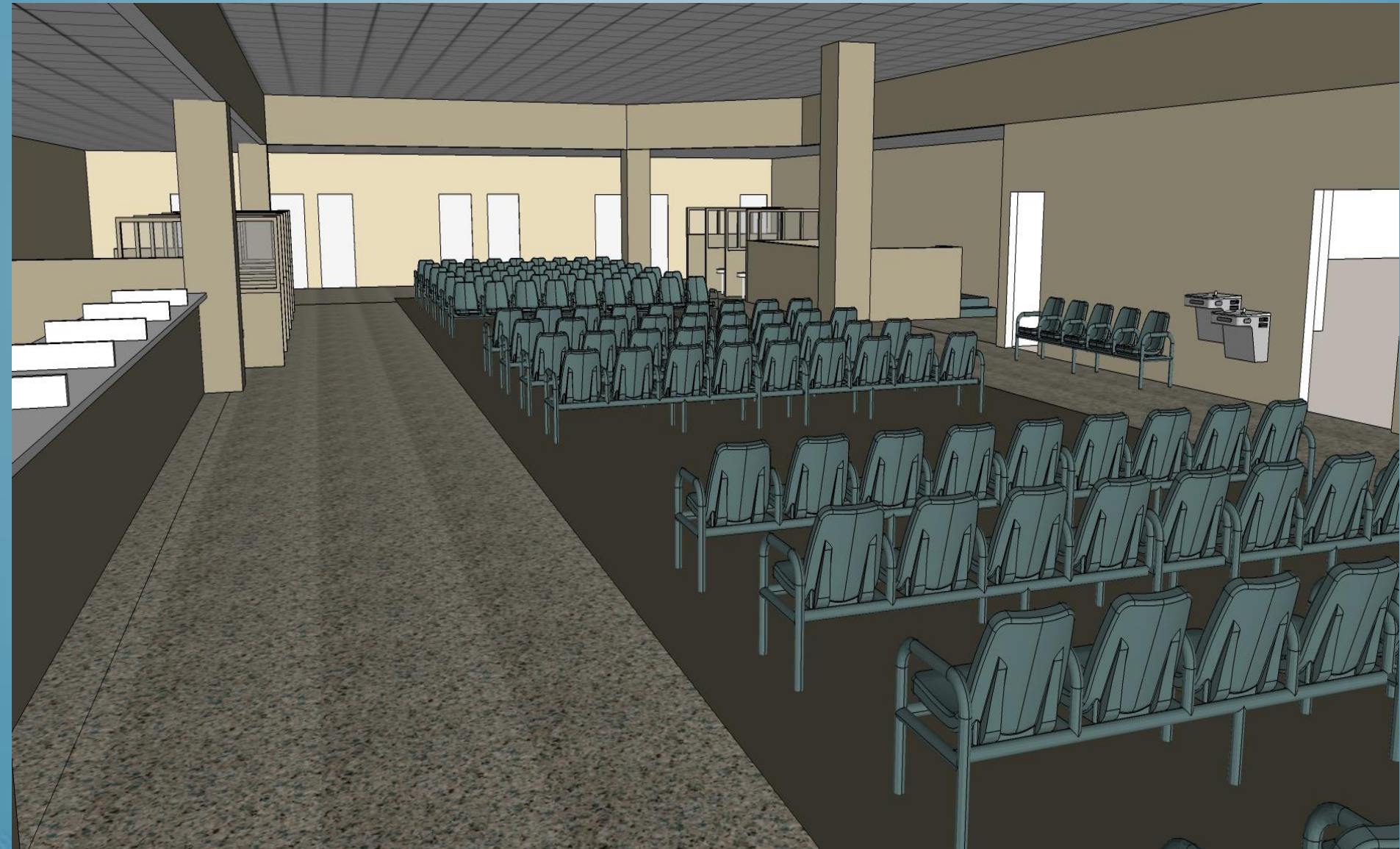
SECOND FLOOR

- ❖ Public Lobby
- ❖ HCSO Administrative Area
- ❖ Central Control Center
- ❖ Two (2) Line-up Rooms
- ❖ Video Visitation Kiosks
- ❖ Receiving Area Open Waiting; Pre-trial Services
- ❖ Court Rooms
 - County Probable Cause/JP (2)
 - Municipal
- ❖ AFIS
- ❖ Secure Holding cells
- ❖ Intake Clinic
- ❖ Pre-release Staging
- ❖ Booking and Classification - Area Open Waiting
- ❖ Dress-In; Clothing Storage
- ❖ ICE

Receiving Area



Booking Area



Clinic - Officer's View



Clinic

View from Nurse's Station



Municipal Court View from Seating Area



THIRD FLOOR

- ❖ Housing: Eight (8) Direct Supervision Cellblocks, 552 beds
- ❖ Floor Control Center
- ❖ Video Visitation
- ❖ Attorney Booths
- ❖ Recreation
- ❖ Chaplain and Re-entry
- ❖ Classification
- ❖ Commissary Storage
- ❖ Miscellaneous Support Functions

Housing Area





Joint Processing Center Next Steps

- **September 2015** - Obtain City Council approval of Interlocal Agreement for construction and operating costs.
- **September 2015** - First transfer of funds to Harris County - \$7,723,836
- **October 2015** - Groundbreaking ceremony
- **October 2017** - Approximate date for transfer of prisoners
- **November 2017** - Approximate date of closure of HPD Jails



Questions

