



# Post Disaster

Base Camp Services For  
Various City Departments



# Pre-Positioned Contract

- No funding required at this time
- Council would need to allocate funds prior to any delivery of service
- Services are scalable
- Change order permitted



# What are Base Camp Services

- Housing Tents
- Dining Hall Services
- Box Meals
- Laundry Services
- Communication Services
- Trucking Services for Fuel

# FEMA Base Camp - 2008 Beaumont, TX



2,000 Person Base Camp for FEMA & Contractor Personnel Responding to Hurricane Gustav & Ike

# 1,400 Bed FEMA Base Camp Port Allen, LA - 2005



1,400 Person Base Camp for Emergency Workers Responding to Hurricane Katrina

# Base Camp Operations



# Under What Circumstance Would We Need Base Camps



- Hopefully Never
- Catastrophic Event
  - Category 5 Hurricane
  - Earthquake
  - Improvised Nuclear Device Attack

# Hurricane Andrew - 1992

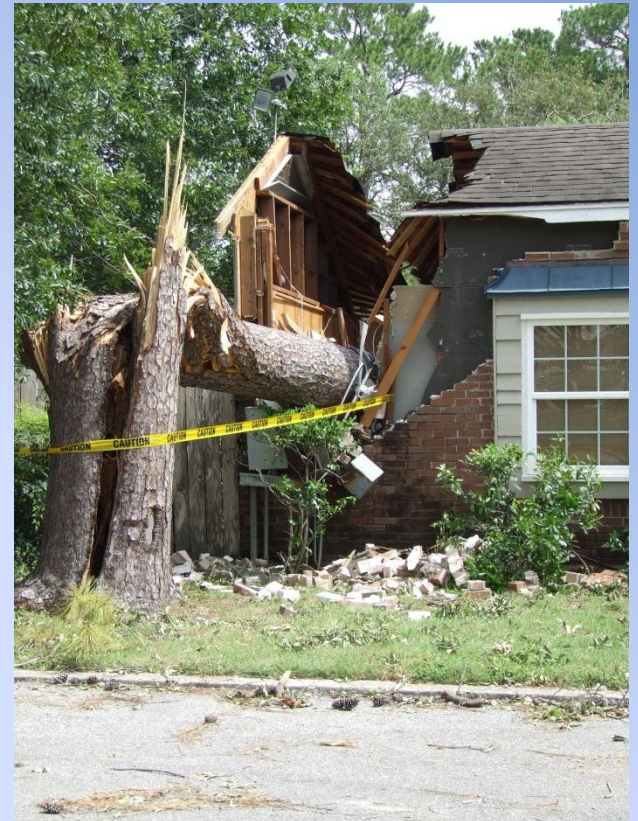




# Hurricane Andrew - 1992



# Hurricane Ike 2008



# Catastrophic Event





# Flexibility

- Pick & Choose Services
- Lessons Learned
  - Food Services
  - Trucking Service for Fuel
  - Temporary Housing

# Why We Need A Pre-Positioned Contract



- Lock Down a Vendor
- FEMA Reimbursement Issues
- Competitive Bid Process



# Bidders

- DRC Emergency Services Inc.
- Taylor International Services Inc.
- Selrico Services Inc.
- Community Caterers Barbeque



# Bid Components

- Tent Housing Service
- Dining Hall Service
- Boxed Meals
- Laundry Service
- Communications
- Fuel Trucking Service

# Pricing For Each Component



- **500** Population    Biweekly Fee    Monthly Fee
- **1,000** Population    Biweekly Fee    Monthly Fee
- **1,500** Population    Biweekly Fee    Monthly Fee





# Questions