



# Houston Airports Update

Jim Szczesniak, A.A.E.

Director of Aviation

George Bush Intercontinental Airport (IAH)

William P. Hobby Airport (HOU)

Ellington Airport (EFD)

Houston Spaceport

## Today's Presentation

- Upcoming Project: HOU Runway 13R-31L
- Update on our Economic Impact
- Update on IAH Traffic Improvements
- Update on Construction Projects at IAH and HOU

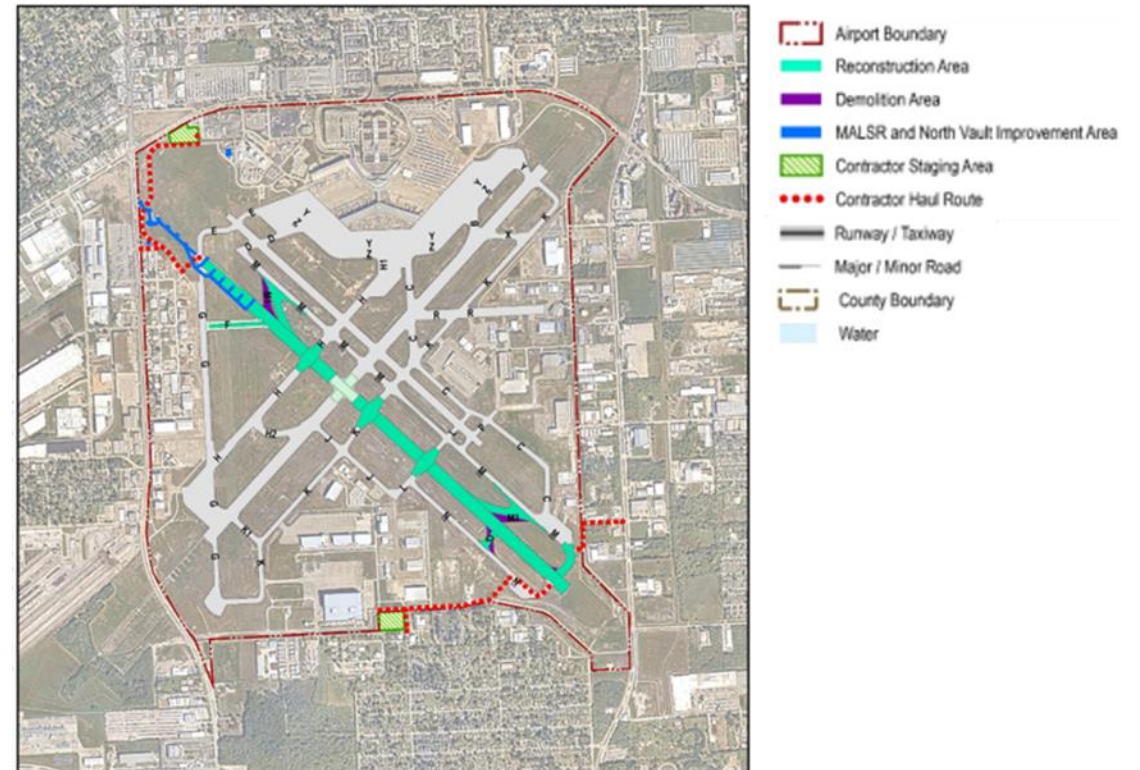
# HOU Runway Reconstruction Project

*Hobby Airport is Houston's oldest commercial airport.*

*Strategic infrastructure improvements meet modern FAA standards  
and ensure a safer airfield for all.*

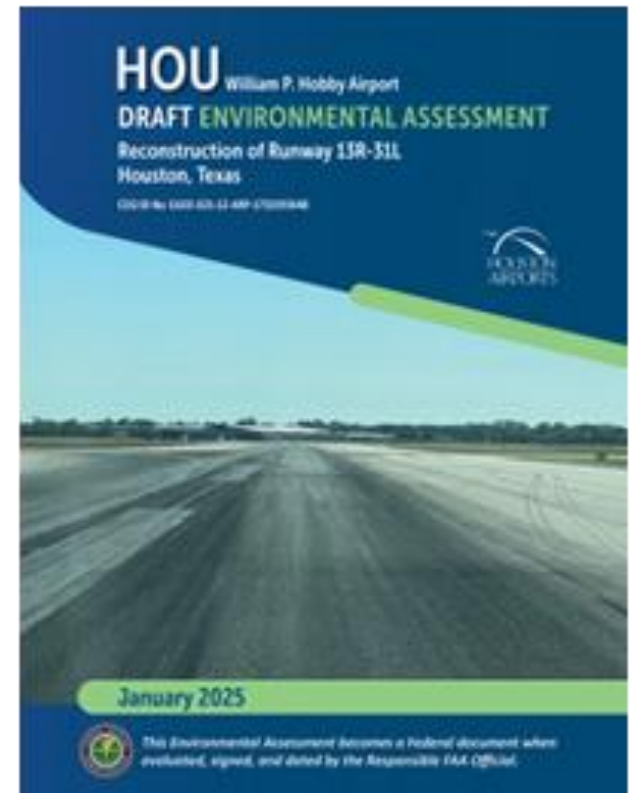
## HOU Runway 13R-31L Reconstruction Project (PN982)

- Anticipated schedule
  - Design
    - June 2024 to October 2025
  - Estimated construction period
    - After FIFA in 2026 to Fall 2028
- Anticipated total budget
  - ~\$150 million
  - Federal grant assistance
  - \$7.5 million for design
  - \$37.5+ million anticipated for construction



## Environmental Review & Sustainability Initiatives

- Environmental Assessment
  - Public comment later this month
- Sustainability Initiatives
  - Recycling existing concrete
  - LED Lighting





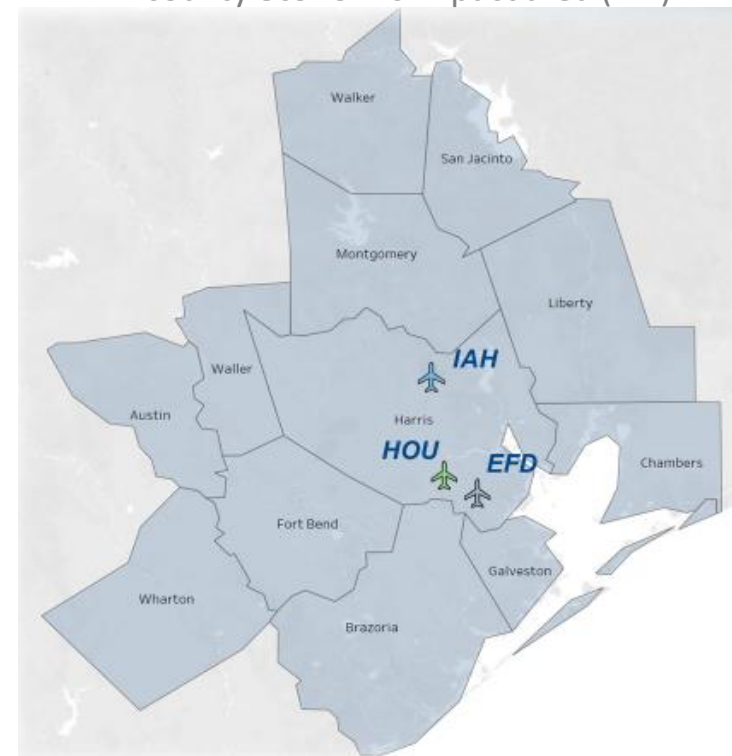
# Updated Economic Impact Study

*Houston's airports and spaceport are an economic engine for the region's economy.*

## Houston Airports Economic Impact

- 207,787 Jobs
- \$40.6 billion in Total Output
- \$13.2 billion in Labor Income
- \$2.4 billion in State/Local Taxes
- \$13.8 billion in Cargo-Related Output

12 county economic impact area (EIA)



- Cargo-related output is reported separately from HAS Output, as it reflects off-airport cargo attributed to HAS activity.

## IAH Economic Impact

- 157,839 Jobs
- \$30.7 billion in Total Output
- \$9.9 billion in Labor Income
- \$1.9 billion in State/Local Taxes
- \$12.5 billion in Cargo-Related Output
- Cargo-related output is reported separately from HAS Output, as it reflects off-airport cargo attributed to HAS activity.





## HOU Economic Impact

- 41,394 Jobs
- \$7.8 billion in Total Output
- \$2.5 billion in Labor Income
- \$476 million in State/Local Taxes
- \$1.3 billion in Cargo-Related Output
- Cargo-related output is reported separately from HAS Output, as it reflects off-airport cargo attributed to HAS activity.



## EFD Economic Impact

- 8,554 Jobs
- \$2.0 billion in Total Output
- \$675 million in Labor Income
- \$41 million in State/Local Taxes



# Improving the Customer Experience

*Better infrastructure, more staff and technology are positively impacting the passenger experience.*

## Big Wins

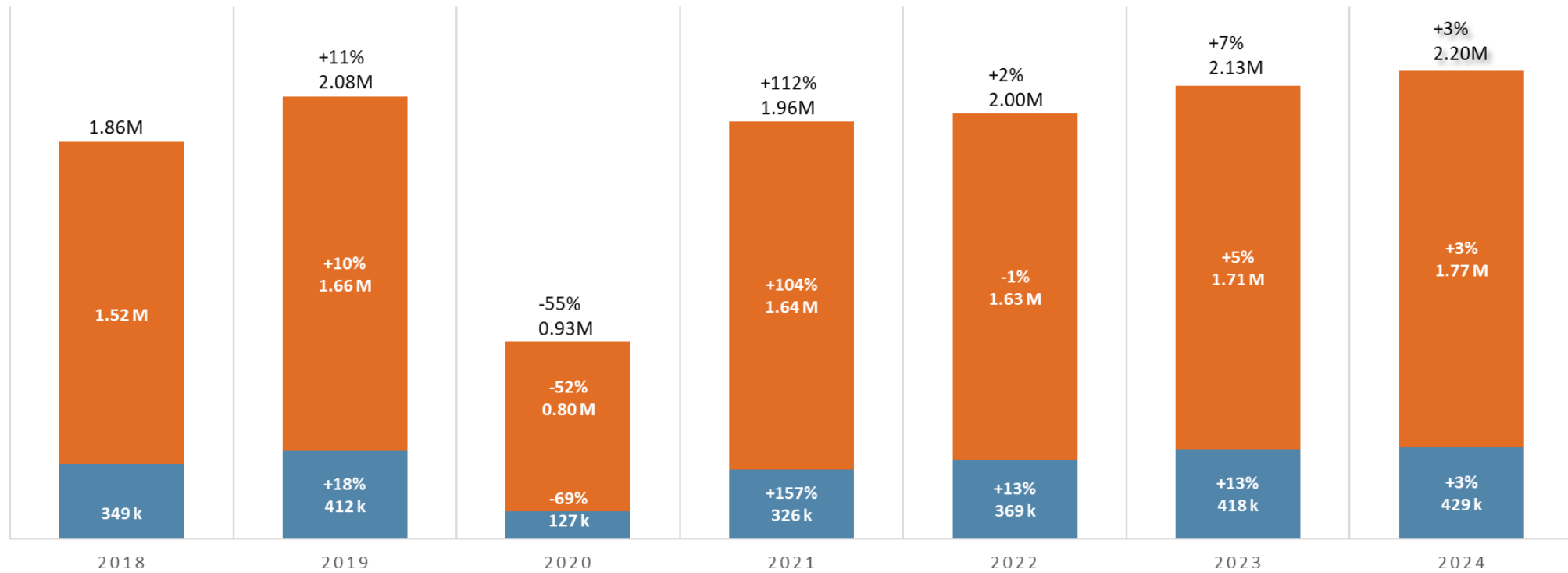
- Automated Online Parking Reservations
  - Expedited entry/exit
  - Saves a passenger time and money
- Expanded IAH Traffic Management Team
  - More Landside Agents
  - More Customer Service Representatives



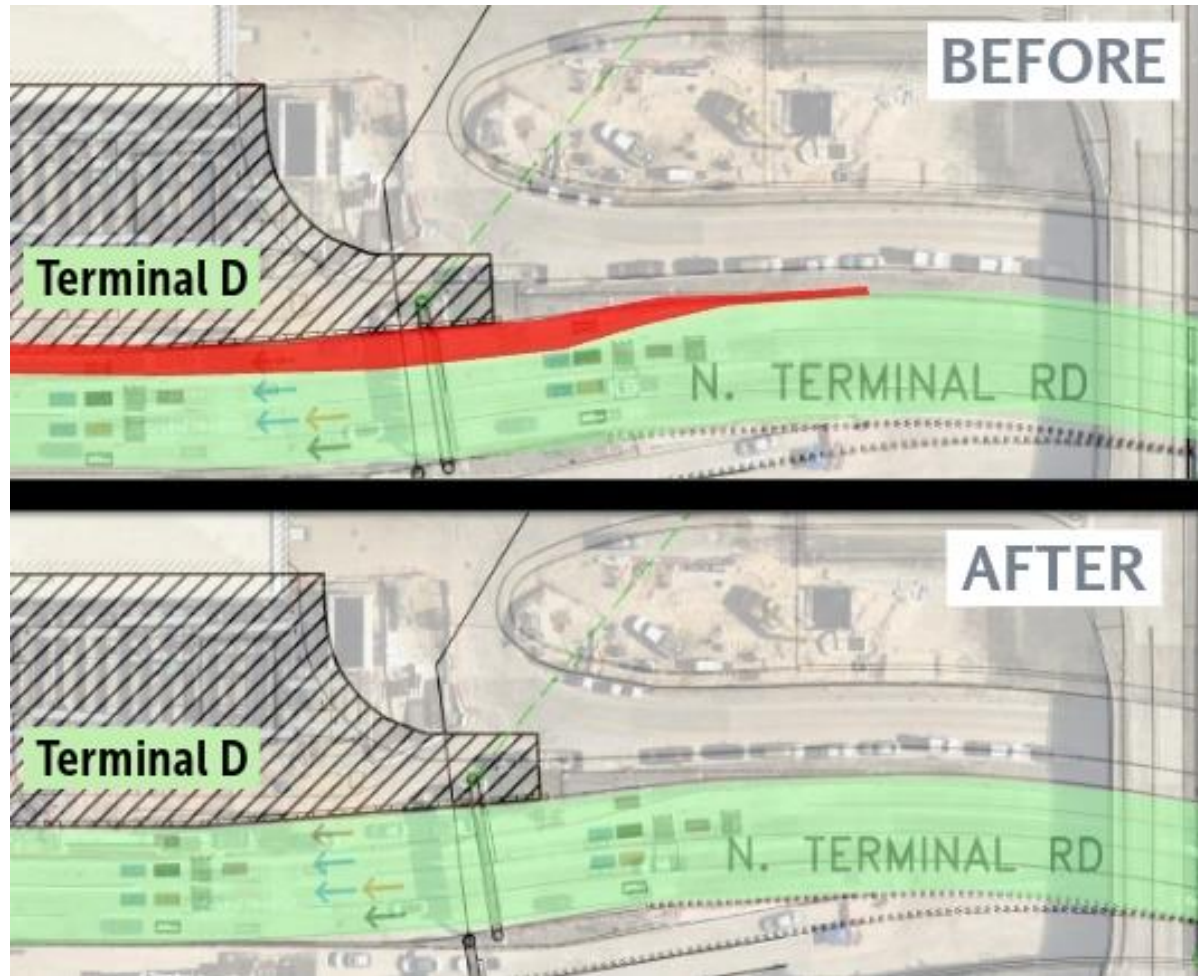
# Holiday Traffic

## THANKSGIVING 12 DAY PERIOD (THU - MON)

■ International ■ Domestic



## November: Restoring North Terminal Road



## Improvements - Thanksgiving

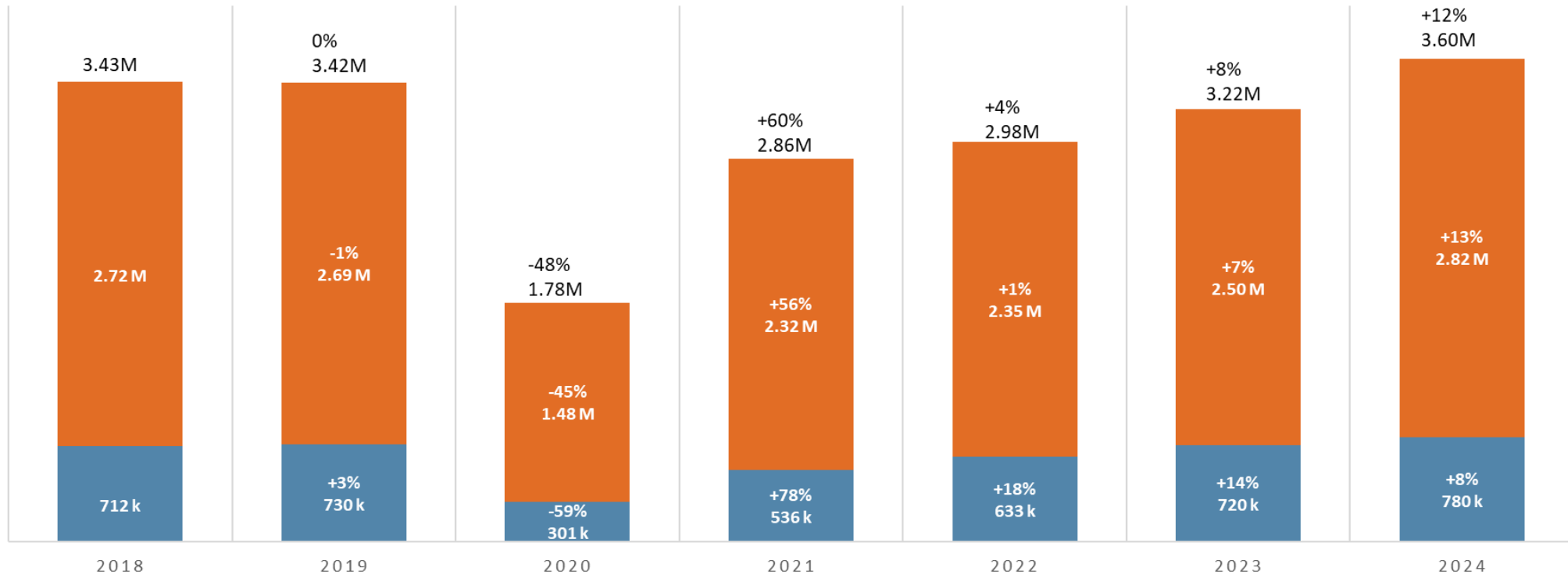
- IAH 2024 passengers: 1.7 million
- IAH 2023 passengers: 1.6 million
  - **7% increase** in passengers at IAH YOY
- More passengers— reduced traffic
- Heavy traffic reduced by **80%**
- Severe traffic reduced by **55%**



# Holiday Traffic

## CHRISTMAS/NEW YEAR 19 DAY PERIOD (THU - MON)

■ International ■ Domestic

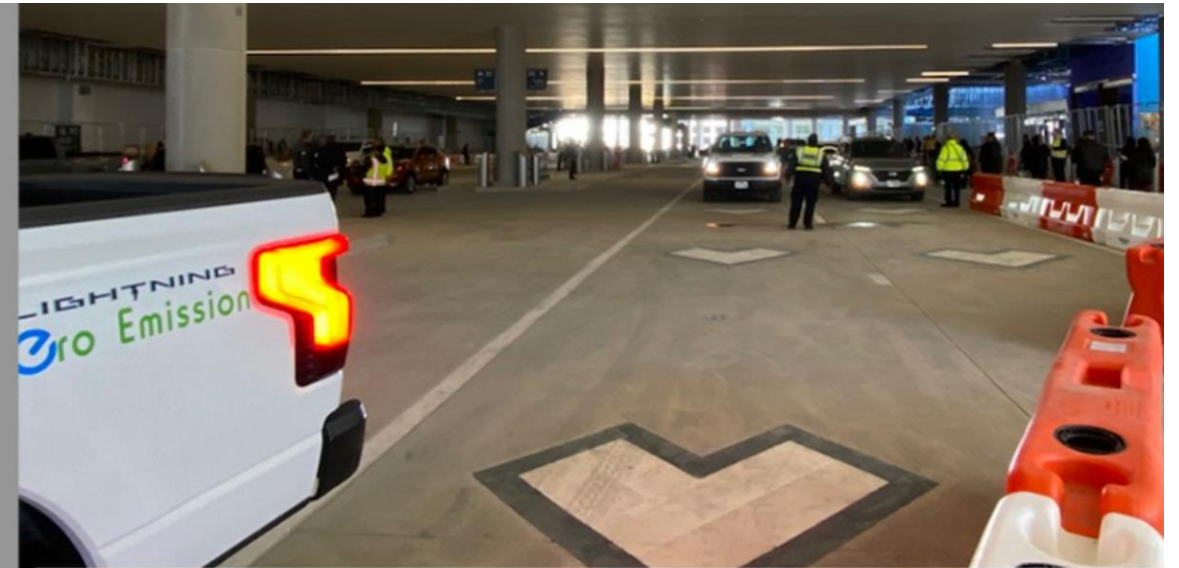




## December: New International Arrivals Curb



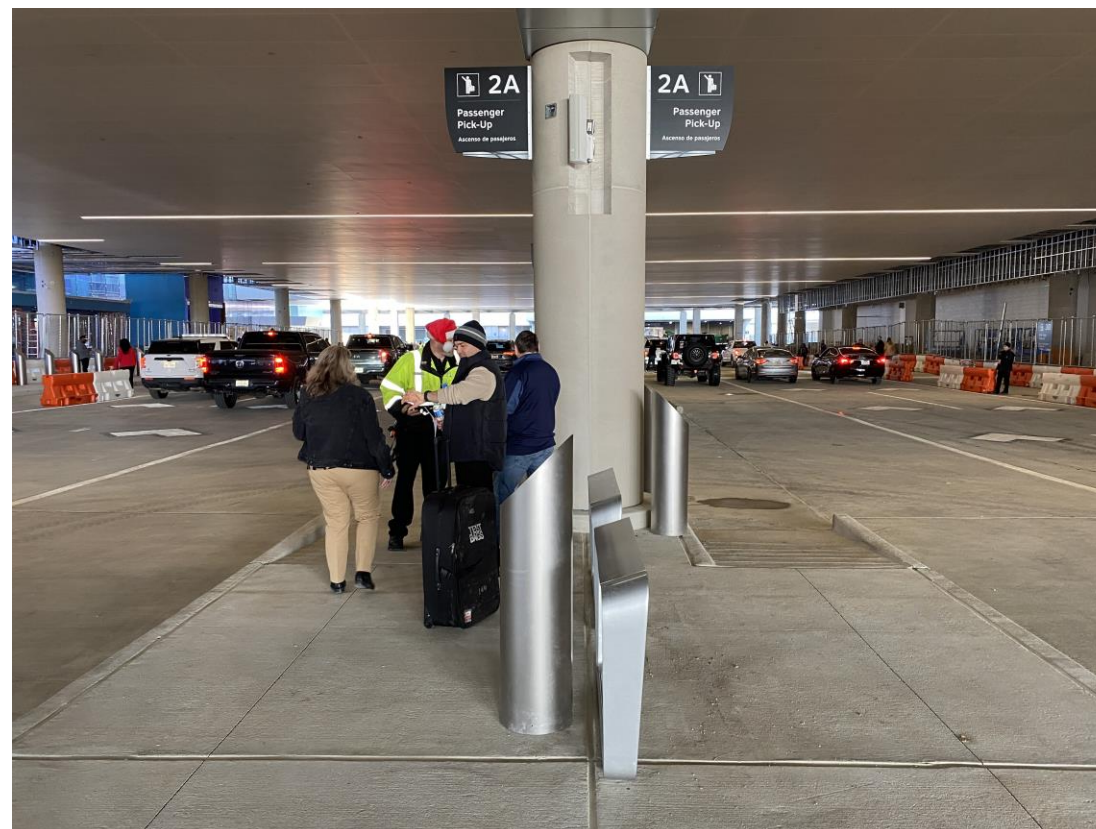
**JANUARY 2022 TO DECEMBER 2024**  
Temporary Terminal E Arrivals Curb  
1 Dedicated Lane



**STARTING DECEMBER 2024**  
Terminal E International Arrivals Curb  
6 Dedicated Lanes with 2 more opening Jan. 2025

## December: Record Passengers, Reduction in Traffic

- IAH welcomed 2.8 million passengers
  - 400,000 more than 2023
    - Overall: 14% increase from 2023
    - Domestic: 16% increase from 2023
    - International: 9% increase from 2023
  - Heavy traffic reduced by **90%**
  - Severe traffic reduced by **99%**
    - 2 minutes in 2024 versus 5.4 hours in 2023



## Coming Soon: More Traffic Improvements

- Additional Lane: International Arrivals Curb
- New International Departures Curb
- Additional Parking Spots in C/D/E Garage
- International Central Processor
  - Phase 1: United Terminal E ticketing operations
    - Decongests Terminal C
    - January/February
  - Phase 2: Foreign Flag move in
    - 2<sup>nd</sup> half 2025

# IAH International Central Processor

Rendering

January 8, 2025



# IAH International Central Processor

Rendering

January 8, 2025



# IAH International Departures Curb

Rendering

January 8, 2025



# IAH International Departures Curb

11 lanes on the upper-level increase capacity

\*Photos taken January 8, 2025



# Other Construction Projects

.

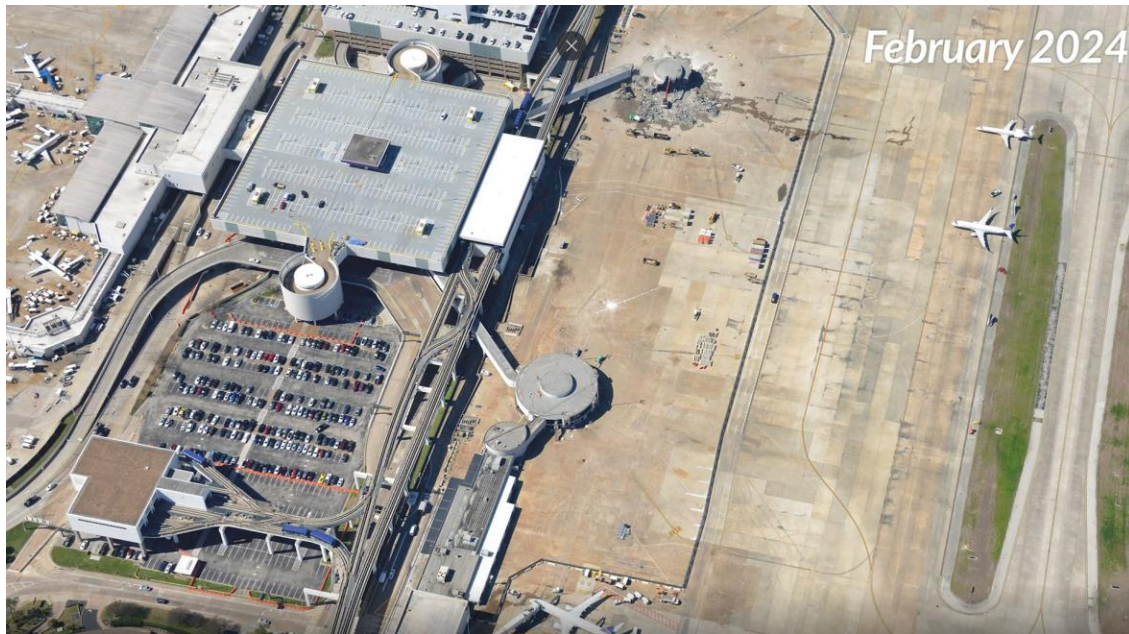


# IAH Terminal B Transformation



- \$2.55 Billion Investment

# IAH Terminal B Transformation



# HOU West Concourse Expansion



- \$470 Million Investment

## HOU West Concourse Expansion





**HOUSTON  
SPACEPORT**

**YEARS OF INNOVATION**

The graphic features a large '10' where the '0' contains a blue globe with white orbital lines. To the right of the '10' is the text 'HOUSTON SPACEPORT'. Below the '10' and text is the phrase 'YEARS OF INNOVATION'. The entire graphic is framed by horizontal lines.



Questions?